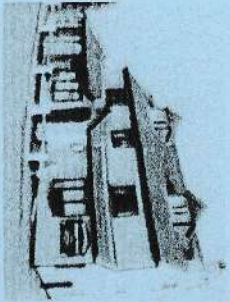


KINOULTON POST OFFICE & VILLAGE STORES

PETER & ALISON DAVIS TEL: 01949 81324



General Post Office

Car tax

Cash withdrawals and deposits for Barclays, Lloyds, Co-op, Smile, Cahoot and Alliance & Leicester
Foreign currency and bill payments
Phone card top-ups available

Shop

Freshly baked bread
Off licence
Greeting cards
DVD hire
Newspapers and magazines

Cakes
National Lottery
Groceries and toiletries
Calor Gas agents

Credit and debit cards accepted

OPENING HOURS

Shop

Mon - Fri 8.30 - 7.00pm
(Closed 1 - 2pm)
Saturday 9 - 7.00pm
Sunday 9 - 12 noon

Post Office

Mon - Fri 8.30 - 5.30pm
(Closed 1 - 2pm)
Saturday 9 - 12.30pm

The

Hickling Standard

Village Newsletter
for Hickling and
Hickling Pastures.

Vol.57 - April - May 2008.



Holistic Health Practitioner

For completely natural, relaxing and powerful alternative healing

- * Reflexology
- * Children's reflexology
- * Reiki healing
- * Reconnective Healing and The Reconnection
- * Spinal Touch Therapy
- * Hopi Ear Candles

Jean Whitebread

01949 81755

0771 22 999 56

Make the call that can make the difference



Tel. 01664-822471

Tree Felling
Lopping,
Pruning,
Ground
Clearance,
Tree Surgery,
Fencing,
Planting,
Logs,
Wood
Chipping,
Hedges
Maintained.
Fully Insured

Keith Wadkin & Son
Tree Specialist

Hickling

Melton Mowbray, Leics.

LE14 3AQ

Established 1959

Paul J. Benson D.O.,M.C.O.

Registered

Osteopath

83, Nottingham Rd. Keyworth

Tel: 0115 937 2343

For Muscular/Skeletal problems

Hickling

Country Fair

Sunday 15th June

Corn Dolly challenge & Fun Run

JRCS FALCONRY

Dog Show

Craft & Market, Music & Displays,
Inflatables and Games
Vintage Cars, Tractors and Bikes
Refreshments

Free Parking

£1-50

Admission

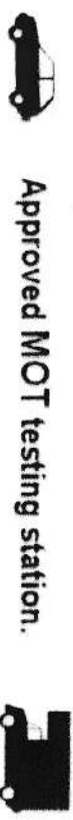
Bhaji Night

Saturday 14th June

Live music, Catering by Indian Nights, Bar
Tickets £16 tel: 01664 823824

In aid of Prostate Cancer, Alzheimer's and local
charities

R & S L Birley Motor Engineers
 East End, Long Clawson. Telephone 01664 822450



Approved MOT testing station.

Servicing and repairs on car & commercial vehicles.

Tyres, balancing, punctures & wheel alignment.

Accident and breakdown recovery service.

Forecourt sales for Petrol, Diesel & Oils etc.



Established in Long Clawson for over 40 years.

E-mail: birleys@long-clawson.com Web page: <http://birleys.long-clawson.com/>

Mobile Hair Stylist

Ex Ragdale

- Cut & Blow Dry £15.00
- Restyle Cut & Blow Dry £20.00
- Semi Colour Cut & Blow Dry £25.00
- Weaved Highlights & Blow £45.00

Contact

Heather on 01664 851726
 Mobile 07903019667



Basin Bhaji
& The Basement Band

Saturday June 14th
 7.30pm (for 8pm)
 Country Fair Marquee

Tickets (£16) include:

- ~ 3 course meal
- ~ Indian Cuisine
- (by "Indian Nights"
 Keyworth)
- ~ Dancing to the brilliant
 "Basement Band"
- ~ Licensed Bar

Buy Tickets From:

- ~ Mary Faulks
 (01664 823824)
 - ~ Caroline Samworth
 (01664 820231)
 - ~ Becky Overall
 (01664 820190)
- BRING YOUR FRIENDS!!**

Please note: You will not be allowed to bring your own drinks into the marquee; only those purchased from the licensed bar provided will be permitted.

Remember Last Year's Fabulous Event!!

Don't Miss Out!!
BOOK EARLY!!

Co-operative Funeralcare
Local people giving extraordinary care

Because we're local WE understand the needs of local people

At Co-operative Funeralcare our emphasis is on understanding. It is through being part of the local community that we have come to understand your needs and design our service to exactly match those needs.

- 24 hour service • Pre-payment plans available • Caring & professional
- Memorial masonry

85 The Parade, Wolds Drive, Keyworth
0115 937 4437

www.co-operativefuneralcare.com



D.S ELECTRICAL

Domestic & Commercial Installation

All Aspects Of Domestic & Commercial Electrical Work Carried Out!
(Certified to BS7671)

Inspection & Testing
Shower Circuits
Fuse Board Installation
House Rewires

P.A.T Testing
Extra Sockets
Fault Finding
Security Lighting



For a Fast Reliable Service & Free Quotation
Contact David Stanyer on

Telephone: - 07791 432 496

Or email: - ds.electrical@ntlworld.com

**Dedicated to Quality
Customer Service!**

**Country Fair
for Kids!**

Children's Disco

Friday June 13th
in the Marquee
6pm to 8pm

*Lots of Fun!
Bring your
Friends!
Friends!
Dance!
Dance!*

Tickets From:
~ Mary Faulks
(01664 823824)
~ Caroline Samworth
(01664 820231)
~ Becky Overall
(01664 820190)
**£3.00 includes Hot Dog
BRING YOUR FRIENDS!!**

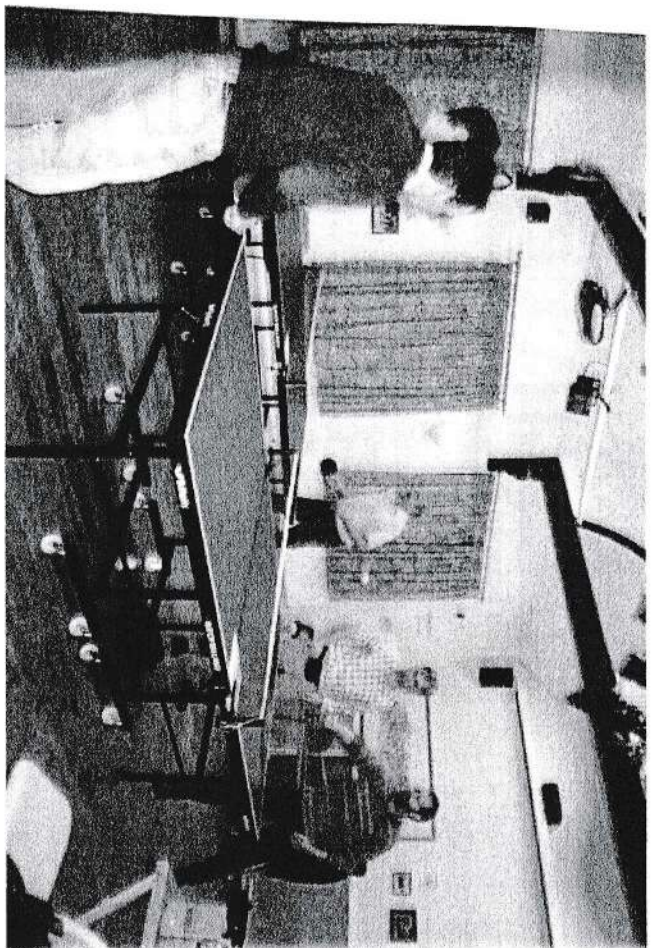
Important: All children under the age of 14 must be accompanied by a responsible adult. The organisers will not take responsibility for children attending the disco.

They think it's all over? We'll see about that!

Hi, I'm Sean Bond, the youngest member of the table tennis organisers. I've been selected to write the article for the Hickling Standard.

With our initial season starting off well with a diversity of ages and skill levels, although shy, we soon started playing young vs young, old vs old, young vs old and sitting having a chat when we were too tired to carry on.

As you may know, we are in the village hall on Monday nights, which



has proved to be a perfect place for the table tennis to be set up, with plenty of room for the tables and still enough room for everyone to have a sit down and a chat, or try one's hand at "Karrum", the popular new game in Hickling!

However, the younger people amongst the fun were very surprised that some of the oldies have a plentiful supply of skill (suppose it must come with age!).

Village table tennis will be re-starting on Monday the 8th of September and there will be a "come and try night" aimed mainly at people from 16 to 20 years old at the start of the season as, although there are a few people in this age bracket, we would like to see more younger people coming to join in the fun.

We hope to see old and new faces when we re-start in the autumn. In the meantime, if there are young adults who want to find out more about how the evenings are run, ring or text me on 07814 723195.

Sean Bond

On The Sands Café&Deli

Whatever the occasion, **On the Sands Café & Deli** will have something to tempt you. Whether you need a buffet lunch, a bespoke cheese board for a dinner party or simply a cake for Grandma's birthday, we can accommodate it.

Call in for a take-away sandwich and a coffee on the way to work or pick up a delicious home-made quiche or best quality meat pie for your tea on the way home.

Stock up the fridge with our range of over 40 cheeses and continental meats, plump olives, beautiful local preserves, honey and an extensive range of chutneys to suit every taste. Buy freshly made bread delivered daily, fresh soups and pasta sauces, delicious home-made biscuits, speciality tea from China and coffee from around the world. Or be tempted by our hand-made chocolates, sweet pastries and traditional home-baked cakes from our own kitchen.

Buffets and Picnics

If you need outside catering for a business event or family gathering, **On The Sands, Deli** can offer a choice of five menus to suit your needs. From a gourmet fork buffet to a sandwich and pork pie lunch or just a simple cream tea with our delicious home made fruit scones, and clotted cream - we are happy to accommodate your requests.

Bespoke Cheeseboards

Hire or buy our beautiful marble platter with glass domed lid and fill it with your choice of speciality cheeses, all labeled and displayed to finish off the perfect dinner party.

Gift Hampers

A range of sizes, beautifully packaged for that special gift. Choose the contents yourself from our extensive range of produce or leave it to us, you won't be disappointed.

Pre-Order Cakes and Pastries

All of our cakes, pastries, puddings and pies are home-made on the premises. From a succulent steak and ale pie to a wholesome Victoria Sponge Sandwich, we have a range on offer to buy every day. But all are available to pre-order and pick up just by calling our cook 2 days before you need it.

Good food

We make a point of it!

Opening Hours

Monday to Saturday
8.30 am to 5.00 pm

7a The Sands

Long Clawson
Tel: 01664 820 208

Disabled access, baby changing and outside seating available

NEW!
Youth Group

CALLING ALL:
10 to 18yr olds in
Hickling, Kinoulton
& Upper Broughton

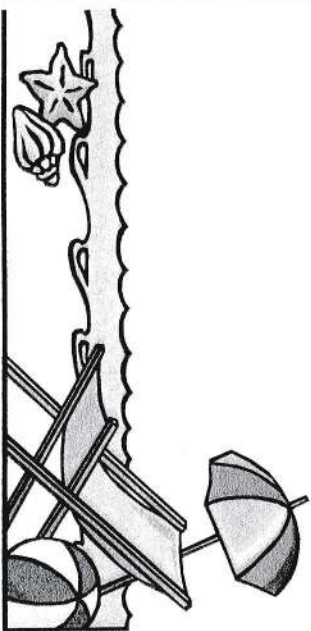
OPEN MEETING
Hickling Village Hall
Wed 9th April 2008
7pm

Some of the kinds of things we're thinking of include:

- ~ occasional films & debates ~ guest speakers ~ informal games nights
- ~ table top games ~ tuck shop ~ someone to talk to ~ outings (bowling, cinema, outdoor trips) ~ community projects ~
- Most of all - we'd like you to decide!**
- ~ come along on April 9th and see what it's all about ~
- ~ if you're an adult who'd like to help (one-off or regularly!) - please, let us know! ~

We Want To Hear
What YOU Want To Do!

Contact Details:
Claire Spruce 01664 823149 the.spruces@virgin.net Heidi Urwin 01664 823550
heidurwin@yahoo.co.uk Jane Fraser 01664 822569 mjlf@yahoo.co.uk
Supported by St Luke's Parish Churches, Hickling, Kinoulton, Upper Broughton



KEYWORTH TRAVEL

For all your travel needs, we can book and arrange the following:

Tailormade & Longhaul itineraries	
Flight only	Ferry
Hotels	Car hire
Package holidays	Passport
Travel Insurance	Cruises
Car Parking	UK Breaks
Coaching Holidays	

And much much more.....

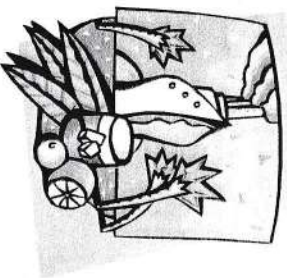
8 MAIN STREET, KEYWORTH,
NOTTS. NG12 5AD

TEL: 0115 9374961

FAX: 0115 9375909

FULLY ABTA BONDED

EMAIL: adele.johnson@keyworthtravel.fsnet.co.uk




Kidney Research UK

Have you got what it takes to tee-off for the Nottingham Kidney Units Appeal?

The Rushcliffe Business Partnership is urging teams of four people to take part in a charity golf day on Friday 16th May 2008 to raise money for the Nottingham Kidney Units Appeal.

The event takes place at Cotgrave Place Golf Club, Stragglethorpe, near Cotgrave and the cost is £160 for a team of four. This includes a bacon roll on arrival, 18 holes of golf, a two course meal and prizes for individuals and teams. There will also be a 'hole in one' competition as well as other prizes and a raffle.

There is also an opportunity for local business to support the event by sponsoring a hole or donating prizes for the raffle, as well as entering a team. A team entry plus hole sponsorship is £200.

The event will be a 'shotgun' start at 12pm.

Entry forms are available from Eileen Bagguley, Community Fundraising Manager on 01332 875358 or email events@kidneyresearchuk.org.

Nottinghamshire Kidney Units Appeal is a partnership between Kidney Research UK and the Nottingham City Hospital NHS Trust to improve the care and support for local kidney patients.

Between us we plan, co-ordinate and carry-out events all year to raise money which is then divided 50/50 between Nottinghamshire Renal Units to provide much needed additional clinical equipment for those living with kidney failure and Kidney Research UK to fund research aimed at finding better treatments, and ultimately a cure for kidney disease.

Most of us know of someone who has been touched by kidney disease, from a painful kidney stone through to end stage renal failure. One in ten people in the UK have some degree of chronic kidney disease and the number of people suffering from kidney cancer is also sadly on the increase. **There is still no cure for kidney disease** but early detection is vital. Kidney Research UK conducts research into the prevention and treatment of kidney disease.

Established 1905



F BAILEY & SON

High-Class Family Butchers

UPPER BROUGHTON

Melton Mowbray

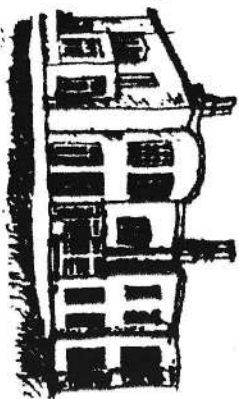
Pork Pies and
Sausages a
speciality

Tel: Melton Mowbray 822 216

Deliveries twice a week
to surrounding villages

DEEP FREEZE ORDERS DELIVERED

Hilary Douson
Sulney Fields
Colonel's Lane
Upper Broughton



Bed and Breakfast

*In a large old family house in a quiet position
with magnificent views over the Vale of Belvoir*

Most rooms have private facilities

Telephone 01664 822 204

Poetry Corner

The Baby-sitter

By Lindsay MacRae

It was clear
From the moment
They walked out the door
That tracey
Had never done
This job before.

Until they came home
She patiently sat
On me

my little brother
and the cat.



April the First

By Clare Bevan

One Literacy Hour
Our teacher, Miss Telling
Said, 'Write down these words.
I am testing your spelling.'

1. Aardvark
2. Proboscis
3. Rhododendron
4. Iridescent
5. Lexicographer
6. Fahrenheit
7. Orchid
8. Onomatopoeia

9. Llanfairpwllgwyngyllgogeryc
hwyndrobwlllantysiliogogog
och.

The Groundlark

By John Clare

Close where the milking maidens pass
In roots and twitches drest
Within a little bunch of grass
A groundlark made her nest

The maiden touched her with her gown
And often frit her out
And looked and set her buckets down
But never found it out

The eggs where large and spotted round
And dark as is the fallow ground
The school boy kicked the grass in play
But danger never guest
And when they came to mow the hay
They found an empty nest

Mrs Darwin

By Carol Ann Duffy

7 April 1852
Went to the Zoo
I said to Him -

Something about
that Chimpanzee
over there
reminds me of you.



Established 1905



F BAILEY & SON

High-Class Family Butchers

UPPER BROUGHTON

Melton Mowbray

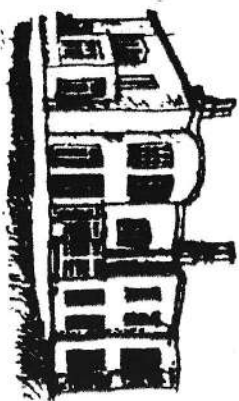
Pork Pies and
Sausages a
speciality

Tel: Melton Mowbray 822 216

Deliveries twice a week
to surrounding villages

DEEP FREEZE ORDERS DELIVERED

*Hilary Dawson
Sulney Fields
Colonel's Lane
Upper Broughton*



Bed and Breakfast

*In a large old family house in a quiet position
with magnificent views over the Vale of Belvoir*

Most rooms have private facilities

Telephone 01664 822 204

Poetry Corner

The Baby-sitter

By Lindsay MacRae

It was clear
From the moment
They walked out the door
That tracey
Had never done
This job before.

Until they came home
She patiently sat
On me

my little brother
and the cat.



April the First

By Clare Bevan

One Literacy Hour
Our teacher, Miss Telling
Said, 'Write doen these words.
I am testing your spelling.'

1. Aardvark
2. Proboscis
3. Rhododendron
4. Iridescent
5. Lexicographer
6. Fahrenheit
7. Orchid
8. Onomatopoeia

9. Llanfairpwllgwyngyllgogeryc
hwyndrobbwlilllantysiliogogog
och.

The Groundlark

By John Clare

Close where the milking maidens pass
In roots and twitches drest
Within a little bunch of grass
A groundlark made her nest

The maiden touched her with her gown
And often frit her out
And looked and set her buckets down
But never found it out

The eggs where large and spotted round
And dark as is the fallow ground
The school boy kicked the grass in play
But danger never guest
And when they came to mow the hay
They found an empty nest

Mrs Darwin

By Carol Ann Duffy

7 April 1852
Went to the Zoo
I said to Him -

Something about
that Chimpanzee
over there
reminds me of you.



Hortor's Recipes

Gratin Dauphinois

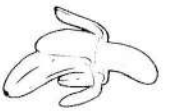
450g/1 lb King Edward or Désiree potatoes
 1 small clove garlic, peeled and crushed
 150 ml/5 fl oz double cream
 150 ml/5 fl oz milk
 Freshly grated nutmeg
 25g/1 oz butter
 Salt and freshly milled black pepper

20cm oval shallow gratin dish, well buttered.

Pre-heat oven to gas mark 2, 300F, 150C

Peel the potatoes and slice them very, very thinly, then plunge the potato slices into a bowl of cold water and swirl them round and round to get rid of some of the starch. Dry very thoroughly. In the gratin dish arrange a layer of potato slices, a sprinkling of crushed garlic, pepper and salt, and then another layer of potatoes and seasoning.

Mix the cream and milk together, pour it over the potatoes, sprinkle with a little freshly grated nutmeg, then add the butter in flecks over the surface and bake on the highest shelf in the oven for 1½ hours.



HORTOR'S NURSERY & FARM SHOP

Open Daily 8.00am - 5.00pm
 Sundays 9.00am - noon

Wide Variety ~ Fresh Produce ~ High Quality

~ Fruit ~ Vegetables ~ Flowers ~ Plants ~
 ~ Friendly & Knowledgeable Staff ~
 (some dairy and other foodstuffs)



Hickling Lane, Kinoulton. Tel. 01949 81312

WILLIAM HEERCOCK

FOR ALL YOUR BUILDING AND DIY SUPPLIES
 SLABS ❖ AGGREGATES
 WALLING ❖ CEMENT
 BRICKS ❖ BLOCKS
 ROOFING ❖ FENCING
 ANY AMOUNTS CATERED FOR



FULL RANGE COAL & SMOKELESS FUEL
 for delivery or collection

MON - FRI: 7.30am - 5.00pm / SAT: 8.00am - 12.30pm

The Depot Airfield
 Dalby Road
 Melton Mowbray

Tel: 01664 500947
 Fax: 01664 410650

Freelance Hair Stylist

Offering you the chance
to experience
a professional and
personally prescribed
service within your own home.

You can invite your friends round too
if you fancy a girls' night in
with a difference.

Services range from cutting,
colouring, long hair work and
temporary hair extensions.

For more information call Heidi
on **07757 707725**

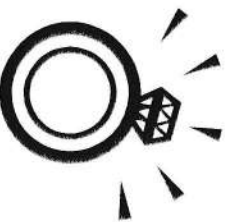
FRIENDS OF SOUTH WOLDS SPRING DANCE

Please join us on SATURDAY 12th
APRIL 2008 at South Wolds School
to enjoy an evening of
entertainment and dancing to the
music of the fantastic local band -
'BASEMENT'. Doors open 7.30
Hot Supper* Bar* Real Ale* Raffle*
Looking forward to seeing you all
Tickets £6 from School Reception
0115 9373506

www.friendsofsouthwolds.org.uk
info@friendsofsouthwolds.org.uk



Thank you



John and Jessie Munks would like to thank all
for their good wishes on their recent Diamond
Wedding Anniversary.

KINOULTON ART EXHIBITION

Sun 4 May & Mon 5 May
10am to 4.30pm
Kinoulton Village Hall

Plus Villagers' Craft Fair
Refreshments, including light lunches

In aid of St Luke's Church Tower Repairs Fund

More details from Di Worn 01949 81563



LANGAR HALL

Langar Nottinghamshire NG13 9HG.

Telephone Harby (01949) 860559 Fax (01949) 86105

web-site: www.langarhall.com E-mail: info@langarhall.co.uk

BEAUTIFUL BEDROOMS

10 comfortable en-suite bedrooms

LOVELY FOR LUNCHEON

Monday - Thursday two courses £13.50

Friday - Saturday two courses £16.50

Sunday Lunch three courses & coffee £27.50

MARVELLOUS FOR MEETINGS

Small private meetings in the study or Indian room

PERFECT FOR PARTIES

Private dining rooms for up to 22 guests

WONDERFUL FOR WEDDINGS

Licensed for civil marriages,

Specialising in small, informal weddings

3 AA stars 2 AA rosettes

ETB 3 stars highly commended

Hickling Film Society

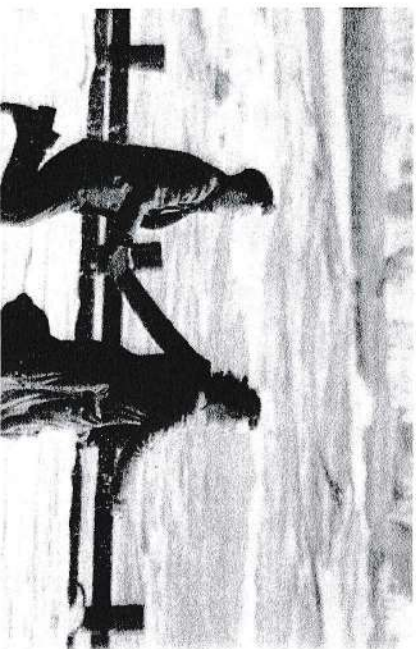
Late March – May 2008 season

(DVD release dates in brackets)

Film	Date	Rotten Tomatoes score
Amélie (2002)	March 18th	90%
Atonement (2008)	April 1st	84%
Notes on a Scandal (2007)	April 15th	87%
Pride and Prejudice (1996) [1]	April 29th	100%
Pride and Prejudice (1996) [2]	May 1st	100%
The Counterfeiters (2008)	May 13th	No score yet

Amélie (Le Fabuleux Destin d'Amélie Poulain), described as being "... quite simply the perfect film", concerns the life of (surprisingly) Amélie Poulain who, after a sheltered upbringing, finds her true vocation in life – helping others find love and happiness. When she falls in love herself, she finds that life is not that simple. It has won many awards – BAFTA, Academy Awards, etc.

Atonement is based on Ian McEwan's novel of the same name, and stars Keira Knightley and James McAvoy. On the hottest day of the summer of 1935, thirteen-year-old Briony Tallis sees her older sister Cecilia strip off her clothes and plunge into the fountain in the garden of their country house. Watching Cecilia is their housekeeper's son Robbie Turner, a childhood friend who, along with Briony's sister, has recently graduated from Cambridge. By the end of that day the lives of all three will have been changed forever.



Keira Knightley and James McAvoy in *Atonement*

* Spa Therapy * Beauty * Reflexology * Dermalogica * Facials *

Key IV Beauty

13 MAIN STREET • KEYWORTH

Spa Therapy & Beauty Experience
Dermalogica Skin Care Centre
Beautiful Sunbathing and a Professional Service



Facials
Waxing
and much
more...

Ask inside the Salon
for monthly
special
offers

Tel: 0115 937 6109

GIFT VOUCHERS AVAILABLE FOR ALL OCCASIONS



13 Main Street
Keyworth, Notts NG12 5AA
Tel: (0115) 937 6109

New Treatment
Introduced

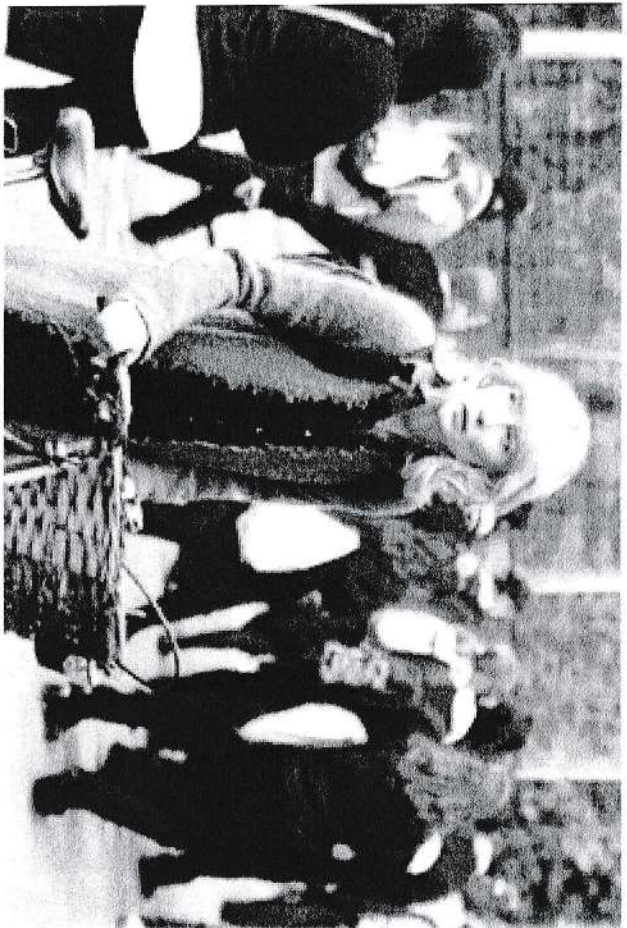
No-Hands Massage

Men's Grooming Menu

* Spa Therapy * Beauty * Reflexology * Dermalogica * Facials *

* Hot Stone Therapy * Body Massage * Holistic Therapy * Waxing * Men's Grooming *

Notes on a Scandal is shrewdly adapted from Zoë Heller's best-selling novel. Judi Dench is truly spellbinding as the dumpy schoolteacher hiding an iron fist in a velvet glove to wheedle her way into the confidence of a younger colleague with a terrible secret (Cate Blanchett).



Cate Blanchett as the new art teacher, Sheba Hart, in *Notes on a Scandal*.

Pride and Prejudice – the 1995 BBC version, with Colin Firth as Darcy and Jennifer Ehle as Elizabeth Bennett. It is much truer to the book than the more recent film with Keira Knightly, though Jane Austen never intended for Darcy to wander about Pemberley déshabillé. I assume you all know what happens. It will be shown in two parts, two days apart, as it lasts 5.45 hours.

The Counterfeiters (Die Fälscher) described by the Independent as "Morality forged in hell" fictionalises *Operation Bernhard*, a secret plan by the Nazis during the Second World War to destabilise the UK by flooding its economy with forged bank notes. The film centres on a Jewish counterfeiter, Salomon Sorowitsch, who is coerced into assisting the Nazi operation at the Sachsenhausen concentration camp.



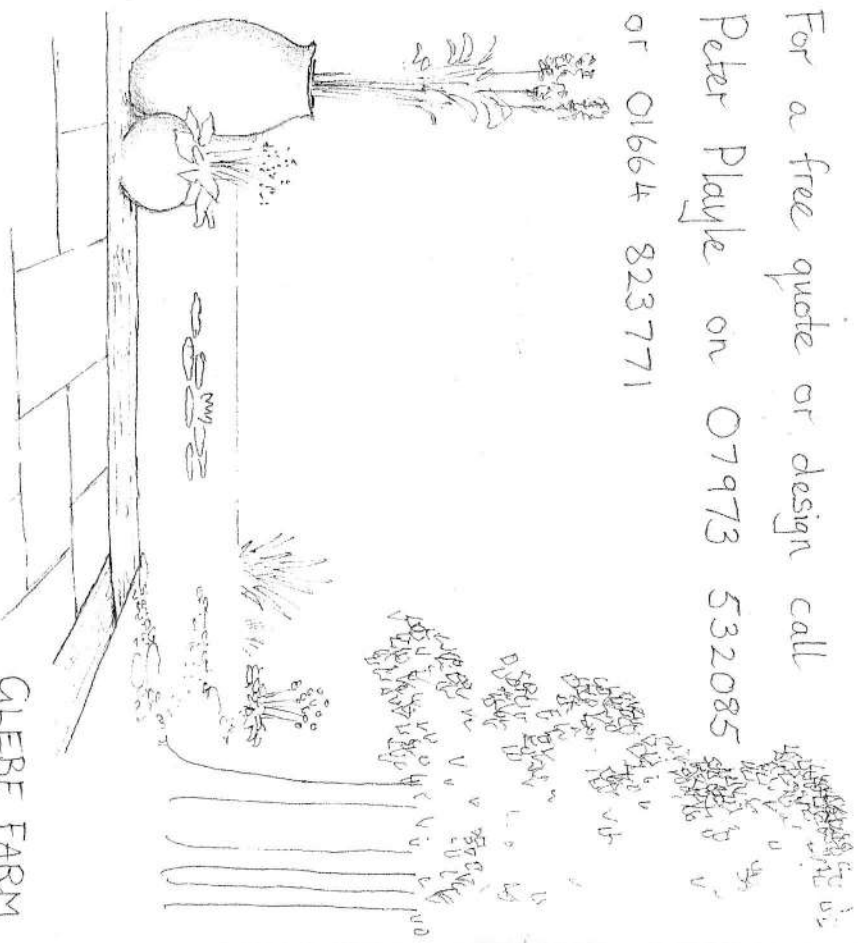
WOODLAND LANDSCAPES

DESIGN AND CONSTRUCTION

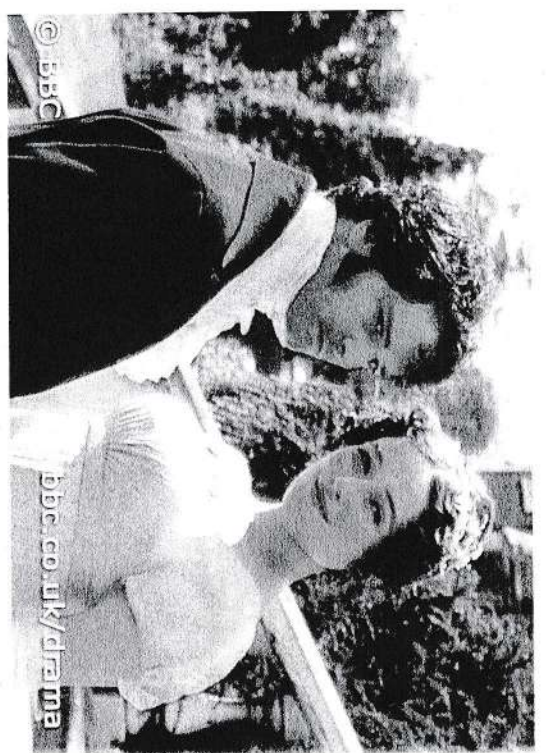
For a free quote or design call

Peter Playle on 07973 532085

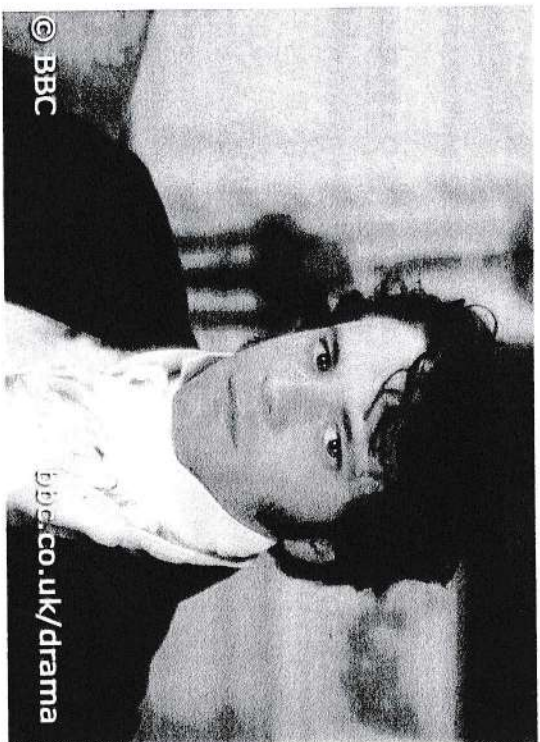
or 01664 823771



GLEBE FARM
MAIN ST
HICKLING



Colin Firth and Jennifer Ehle in *Pride and Prejudice*.



Remember all these films are on Tuesdays (except *Pride and Prejudice* part 2, which is on Thursday), start at 7.30 and are free (although a donation is always appreciated).

Just turn up and enjoy the film.

Vale Electricians

Electrical Contractors

Specialists in all types of Industrial,
Commercial and Domestic Installation

1a Station Lane, Old Dalby,

Leicestershire LE14 3LR

Telephone (01664) 822 217

National Inspection Council for
Electrical Installation Contracting
n i c e i c
APPROVED CONTRACTOR



Creative Curtains

MADE TO MEASURE SOFT FURNISHINGS

'TWIN TREES', PARADISE LANE,

OLD DALBY.

01664 822475



A.R. & C.A. PEET

MULTIFUEL, WOODBURNING & GAS STOVES

ROOM HEATERS, COOKERS, BOILERS, LINERS AND FLUE PIPES

TEL: TONY OR CAROLYN ON 01664 822397

HOME FARM, MAIN STREET, HICKLING

Poetry Corner

From: A Rhyming History of
Britain 55BC - AD 1966

By James Muirden

Though roads were, as the crow flew,
shorter,

Most people, wisely went by water:

No gangs of highwaymen to fear,

And usable throughout the year

Except when winter's breath congealed

Its marble glaze on stream and field.

That's why canal building began,

To take freight where no rivers ran.

But roads got better everywhere

Once turnpike trusts began to share

Their costs and upkeep, by a charge

Anticipating *Le Pège*.

Slum dwellers with no bed or loo;

Piece workers with too much to do ...

They were the flotsam on the shore

As landlords fenced in more and more.

But some of these estates would show

The way all farming was to go.

For instance, root crops helped to

feed

The soil for its future need:

While they kept cattle ticking over

Until next season's grass and clover -

Which came as a distinct relief

To those not keen on salted beef.



Intercity

By Christopher Reid

Tracks that tie town to town

Leave farmland free.

From the tight-stretched train, I

see

Odd-shaped fields flung down

Haphazardly:

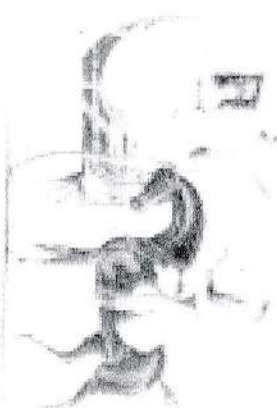
In one of which, my eye

Is caught

By riderless horse taking a short

Canter, on the sly,

Like a loose thought.



KEALY'S MOTORS



M.O.T'S, BODY WORK,
INSURANCE WORK, TYRES,
EXHAUSTS, FREE QUOTES,
FREE COLLECTION AND
DELIVERY.

PHONE SHAUN ON

01664 822072

Nottinghamshire County



Principia

Rushcliffe Residents get involved in shaping the local NHS

More than 450 residents living in the Rushcliffe area have shown an interest in getting involved in shaping their local health services.

Principia Partners in Health sent out leaflets to every household in the area asking people to get involved in the organisation by becoming active community members.

Principia is a social enterprise which brings together all the family doctors, community nurses, therapists, other health practitioners and managers along with patients in Rushcliffe to decide on and deliver local health services and improve the health of the community. It is supported in doing this by Nottinghamshire County Teaching Primary Care Trust.

At the very heart of Principia is the commitment to involve patients and the public at every level of the organisation. People who responded to the leaflet can choose how involved they want to get.

They can join a critical friends group or participation group at their local GP practice to have an input in improving services. They can join a lay readers panel which helps make NHS jargon more reader friendly. They can join a patient forum or agree to participate in questionnaires and surveys.

If they want to get more involved in the running of Principia they can join its Patient Reference Group or become one of six community directors who sit on the Principia Board.

Principia chairman Dr Clive Rix said: "Principia is unique in the way it actively seeks to involve local people to help lead the changes to improve health services and the health of residents in Rushcliffe.

"We are delighted that so many people in Rushcliffe have responded to our invitation to get involved as it means we know the work we're doing to make health services more responsive and accessible is being guided by the very people who use these services."

If you would like to find out more about getting involved in Principia as a community member then contact Principia's Patient Advice and Liaison Service on 0115 9560320.



**"Nurturing the
Seeds of Learning"**

Open 7.30am - 6.00pm Monday to Friday

For children from 6 weeks to 8 years

3 and 4 year old Vouchers accepted

Fully Ofsted Registered

For further information phone Rebecca on 01949 81522
Or call in for a visit



**YOUR LOCAL INDEPENDENT
DRY CLEANING SERVICE**

- Repairs and Alterations
- Day and Evening Wear
- Silks and Wedding Dresses
- Duvet, Eiderdowns and Sleeping Bags
- Laundered Shirts Service
- Free Removal, Collection and Re-Hanging of Curtains

13 Main Street, Keyworth, Nottingham NG12 5AA. Tel: (0115) 937 6599

Country Fair 2007 Accounts

(includes disco, dance and It's a Knockout)

	£	£	
Income		Expenditure	
Craft	168.00	Marquee	469.00
Gate	1,105.00	Ambulance care	60.00
Market	71.00	Kennel Club	20.00
Raffle	229.50	Adverts	58.90
Bed game	60.50	Falconry	350.00
Catering	688.11	Flying Angels	120.00
Games	169.60	Marching Band	150.00
Sponsor	100.00		
Donation	30.00		
Tombola	244.30		
Pimms	105.83		
Ice cream	100.00		
Inflatables	50.00		
Run	1,418.00		
Dog show	1,716.00		
Dance	1,817.05	Profit	6,844.99

Scarecrow Weekend 2007

Gate	1,969.60	Advert	55.61
Refreshments	2,102.80	Music	50.00
Craft	212.00	Scarecrows/sticks	94.00
Market	239.00	Barrel Organ	100.00
Dance	416.00	Printing	18.60
Tombola	390.00	Village Hall	10.00
Ice cream	250.00	Total	228.21
Singray	97.00		
Raffle	817.00		
Scarecrows of sticks	174.50		
Donations	70.41		
Inflatables	80.00		
Archery	208.00		
Total	7,066.31	Some small items still to pay	

Donations made - £4,000 to each of Air Ambulance and Breast Cancer Care, £1,500 to each of St Luke's and the Village Hall, £60 to Silver Jubilee and £200 each to the Cricket Club, table tennis and Pre-School.



SKIP HIRE

FAULK'S WASTE SERVICES

- 3.5yd3 to 35yd3 skips with drop doors
- Prompt & Reliable Service with no Hidden Extra Costs
- Household and Trade enquiries welcome

01664 822797

Mini Digger & Skip Loading Dumper Hire

ISOBEL MOORE & DAUGHTERS BEAUTY THERAPY

All treatments available from head to toe.

FOOT HEALTH PRACTITIONER

Nails trimmed & filed, hard skin removed, corns enucleated, any foot problems welcome.

Parties plans available for children, hens, girlies and pamper.

Based in Long Clawson
Mobile service also available
01664 823947 ♦ 07977 422903

FROM HICKLING PARISH COUNCIL IMPORTANT TELEPHONE NUMBERS

The Parish Council, following discussion with the Police and County Council, have been advised that all non-urgent or non-emergency calls for the Police should be directed to Nottinghamshire Police on 0115 945 5999 (this number is in the Village Directory). For all emergency calls you should continue to dial 999. Because our telephone area code originates from the Leicester exchange your call will automatically be diverted to Leicester Police by the BT operator. We have been advised that the County or Borough councils and police do not have any say in this matter.



The Parish Council has provided this list of numbers which may be of use if people need to report problems.

Nottinghamshire County Council for all highways matters (roads, pavements, footpaths, street lighting, verges, road draining system and signage). 0115 977 3377

Seven Trent Water (Customer Service Line) 0800 7834444

Alternatively seek out your nearest Parish Councillor.
Parish Clerk is Maggy Jordan - 01664 822088 or
a.terry125@btinternet.com

CHURCH SERVICES

April - May 2008

Date	Day	HICKLING	KINOULTON	UPPER BROUGHTON
APRIL				
6	3rd of Easter	11.00 Holy Communion	9.15 Holy Communion 10.30 Slugs	10.45 Sunday Crew 6.30 Evensong
13	4th of Easter	6.30 Evensong	11.00 Family Service	9.30 Holy Communion
20	5th of Easter	11.00 Family Service	9.15 Holy Communion	10.45 Family Service
27	6th of Easter/ Rogation	6.30 Songs of Praise	11.00 Morning Prayer	9.30 Holy Communion
MAY				
1	Ascension Day	7.30 Holy Communion		
4	7th of Easter	11.00 Holy Communion	9.15 Holy Communion 10.30 Slugs	6.30 Evensong
11	Pentecost	6.30 Evensong	11.00 Family Service & Baptisms	9.30 Holy Communion 10.45 Sunday Crew
18	Trinity Sunday	11.00 Family Service	9.15 Holy Communion	10.45 Family Service
25	1st after Trinity	6.30 Evensong	11.00 Morning Prayer	9.30 Holy Communion
26				

Rotas for April and May 2008

DATE	FLOWERS	CLEANING	REFRESHMENTS	SIDESMAN
6 April	Mrs M Simpson	Mrs M Simpson/Haines	Mrs Parkes/Wood	Mrs Thomas
13	Mrs E Vear	Mrs Walker/Chahal		Mrs Faulks
20	Mrs R Watts	Mrs Sexton/Wood	Mrs Simpson	Mrs G Simpson
27	Mrs B Herd	Mrs Brown/Kargl		Mr D Malpas
4 May	Mrs G Simpson	Mrs Collishaw/Herrick	Mrs Faulks	Mrs A Thomas
11	Mrs E Parkes	Mrs G Simpson/Faulks		Mrs Faulks
18	Mrs P Jacks	Mrs M Simpson/Haines	Mrs Vear	Mrs G Simpson
25	Mrs G Collishaw	Mrs Walker/Chahal		Mr D Malpas

Thank you for looking after our Church and making it a good place to be!

Easter Vestry and Annual Parochial Church Meeting - Tuesday 8th April 7.30pm in the Church

The Easter Vestry Meeting is the meeting of Parishioners when the two Churchwardens are elected. Churchwardens have the important job of representing the people of the parish in the Church and they have responsibility for the maintenance of order in public worship as well as leading in the maintenance of the church building and churchyard. Margaret Wood and John Bloor have been fulfilling their task admirably during the year. Do come to support them in their task.

The Annual Parochial Church Meeting (APCM) follows immediately after the Easter Vestry. This is the time when members on the Electoral Roll of the Church elect, from their number, people to serve on the Deanery Synod and Parochial Church Council. We receive the Annual Report and Accounts for the previous year and look forward to the coming year and any projects we might be planning.

St Luke's is your Parish Church and many of you support us financially and with your time. We appreciate that! Do come to the meetings and participate.

Stephanie Fahie - Rector

St Luke, Kinoulton and the Hosted Post Office – Welcome!!

Rev Stephanie Fahie, Rector Tel 01949 81657

You will know that the Post Office shop at Kinoulton is due to close very soon though a date for this is not clear. The reorganisation of the Post Office has contributed to this in a large part. Following what was called 'a consultation period' the Post Office decided that 3 half day sessions of Post Office service would be provided in Kinoulton. This would be a 'Hosted Service' provided by a Core Sub-postmaster, in our case the Postmaster of Sysion, Leicester who is already running another such a service. Premises were required. The Neville Arms was approached first and then Kinoulton Village Hall but both were unable to proceed for various reasons. So the Church was asked! Kinoulton Parochial Church Council (PCC) have not hesitated to say 'Yes!' We have applied for Faculty, which is equivalent to Planning Permission, and expect it to be granted in April. The necessary telephone line and extended electrical power points will be installed at the back of the church at cost to the Post Office. The Service will conducted from what is called a 'Rural Trolley'; all the electrical equipment will be brought in for each session and it will be possible to do all your usual post office business. The Service will be on the following days:

Tuesdays 2.00pm - 5.30pm

Wednesdays 9.00am – 1.00pm

Thursdays 2.00pm – 5.30pm

The PCC see this as a wonderful opportunity to serve the communities which currently use the Post Office in Kinoulton and would like to say 'Welcome' to you all. We hope that the small hourly rental (£3.50) will cover the extra heating and lighting costs as well as contribute to the Insurance of the Church. We are providing the premises for the Hosted Service not the service itself. We recognise that the current shop provides a vital community hub and meeting place where all sorts of exchange of information and conversation takes place. We hope that you will see St Luke's as a place where that can continue. So we will be running a 'Coffee morning' on Wednesdays. Other developments will be something for the future. The church is at the heart of the community and this will make it more so. If you are worried about the Lord Jesus turning over the tables of the money changers as he did in the Temple (Matthew 21.12-13) He did so because the people were being cheated and robbed! We are confident that this is a positive and right use of our lovely Church building!

St Luke's Parochial Church Council

The Valentine's Lunch was enjoyable once again, with Canon Haydock entertaining us with a very funny speech. £211.60 was made for funds. Thank you to everyone who helped in any way.

Thank you also to everyone who contributed again this year to the floodlighting of the church. It is so nice to see it lit up at night during the winter months.

There will be another Three Parishes Walk again this year on Good Friday, starting at Upper Broughton church at 12 noon, stopping at Hickling church for soup and roll, then on to Kinoulton church via the canal towpath for hot cross buns. Everyone is welcome to join us and let's hope the weather is as kind to us as last year!

As soon as you are aware of any newcomers moving into the village, could you pass on their details to John or myself to ensure they are given a warm welcome through the Hickling Standard.

Margaret Wood 01664 822257

John Bloor 01664 822682

Churchwardens

HICKLING PARISH COUNCIL

**Minutes of a meeting of the parish council
held on Tuesday February 26, 2008 at 7.30pm**

Couns. Tina Combellaack (Chairman)

Jim Woolley

Janice D Neal

Glyn Pilkington

Jane Faulks

Rebecca Meredith

Michael G Thompson

The meeting opened under the chairmanship of Coun. Mrs Janice Neal who reported that the chairman would be arriving later. Coun. Combellaack arrived and took the chair from Item 7 onwards.

Also in attendance: The clerk Mike Elliott, Rushcliffe Borough Council member Coun. Ken Keyworth and 40 members of the public.

1] **Appointment of chairman** Coun. Mrs Neal was elected to take the chair. *→ more than that!!!*

2] **Apologies** were received from Coun. John Cottee (Notts County Council).

3] **Declaration of Interest** Coun. Mrs Jane Faulks declared a prejudicial interest in the matter concerning The Wharf and Coun. Mrs Rebecca Meredith on the planning application 08/000323/FUL.

4] **Minutes from previous meeting held on January 15, 2008** were accepted and signed by the chairman.

5] **Clerk's Report**
The clerk explained to the meeting how the use of the Public Session item on the agenda should be carried out and said the public could not take part in the remainder of the meeting unless members agreed to suspend Standing Orders. He confirmed that it required a parish meeting to call a Parish Poll, and that the parish council did not have to act on what that poll decided.

6] **Correspondence**
Nottinghamshire County Council had forwarded its new Rights of Way Improvement Plan and it was agreed this be placed in the circulation file. The Audit Commission advised of the appointment of a new external auditor in Clement Keys, having taken over from Hacker Young. Notts Rural Community Council said that they were now using the name Rural Community Action Nottinghamshire and confirmed the membership of the parish council.

Nottinghamshire Association of Local Councils advised of a training course on 'The Council as employer' and Coun. Mrs Neal said she would attend.

A letter was read from Coun. Glyn Pilkington from his Parish Plan Steering Group membership point of view in which he said they wished to see the Plan succeed but acknowledged it might be better handled by others. They were proposing to hold a meeting to discuss the position and report to the next parish council meeting.

Mrs Kay Hand of Main Street wrote on the subject of dog bins and wished to ask the council not to consider putting them outside individual properties, and members agreed on that point. The clerk was asked to contact the Borough Council dog warden in regard to the current problems.

7] **Planning Matters**

Planning Applications

07/02321/OUT A E Faulks Ltd; Residential development comprising a mix of 6 single storey and two storey dwellings with vehicular access; The Wharf, Main Street. The application had been withdrawn.

08/00015/COU Mr M Samworth; Change of use of paddock land to garden curtilage; The Old Rectory, Main Street. The application had been withdrawn.

08/00049/FUL Mr and Mrs R Neal; Change of use of stables to form dwelling

comprising renovation, refurbishment, demolition and rebuilding works. Object on grounds of the negative impact on the neighbouring properties.

08/00323/FUL Miss T Clarke and Mr V Brown; Erect single storey dwelling with vehicular access (Revised scheme); Weir House, Main Street. The parish council objected to the previous application on the grounds of its access. It was agreed the papers be circulated for further discussion.

Rushcliffe Borough Council Decisions

07/01750/OUT Mr Christopher Granger; Erect one dwelling and garage; The White House, Main Street; Grant Outline Planning Permission

07/02339/VAR Mr and Mrs D Bryce; Vary condition 5 and 13 on planning permission 07/00858/FUL to permit insertion of additional windows and to re-skin grain store element with new brickwork, erect timber shed on land adjacent to barn; Barland Fields, Bridegate Lane; Grant Permission

07/02347/FUL Mr and Mrs S Doolan; Ground, first and two storey side extension to form annexe accommodation; Bowling Green Cottage, The Green. Refuse Permission
07/02348/LBC Mr and Mrs S Doolan; Ground, first and two storey side extension to form annexe accommodation; Bowling Green Cottage, The Green. Refuse Listed Building Consent

8] **Parish Plan**

The chairman commented on the excellent work carried out by the Steering Group and said all concerned should be congratulated for what they had and were doing. She said a meeting was due to be held to outline the future direction of the group.

Coun. Mrs Faulks said she felt there was a need to agree on the protocol to be adopted and said she felt there could be a conflict of interest in that the parish council chairman was also chairman of the Parish Plan committee.

The council would discuss the overall matter of the Parish Plan once it had received a report from the Steering Group after its next meeting which it was understood would be held shortly.

9] **Hickling Wharf**

Coun. Mrs Jane Faulks left the meeting having declared a prejudicial interest in this item.

The clerk said letters had been received from Tessa Clarke and Vic Brown, Dorothy and Brendan Clarke, Jane Faulks and Jane Fraser, all outlining their thoughts on the possibility of development on the site of The Wharf. A message had also been received from local resident Mrs Ask who said she would oppose a major scheme but would welcome one offering such as a tea shop, postal service and a deli, giving opportunity to offer work to local teenagers.

Discussion took place on the current position and the chairman said she agreed there was need for further consultation to take place. She felt there was some misunderstanding in the village on what had so far been done but hopefully the future

consultations that would take place would deal with this.

The council agreed that it would decide on its next action after taking comments from the public later in the meeting.

10] Environmental Matters

Coun. Mrs Neal reported on a recent burial in the cemetery and said two adjacent plots had been booked by the same family.

Comment was made on the fact that the village did not receive a gritting service from Notts County Council during the recent cold weather and the clerk was asked to write to the Highways Department to point out that the road through the village was on a school bus route. A problem caused by inappropriate parking of a vehicle near the Old Chapel in the village was to be raised with the owner by Coun. Woolley.

The poor standard of workmanship by Notts County Council Highways staff in placing loose gravel to fill roadside pot holes on Bridegate Lane was to be pointed out to them.

11] Parish Clerk

The chairman said a new appointment had been made in the name of Ms Maggie Jordan and she would take up office on April 1, 2008. Three people had been interviewed.

12] Finance The parish council approved payment of the accounts as per the presented schedule.

Total expenditure for meeting

£507.94 £0.0 £507.94

Total to date in the current financial year

£7,579.66 £21.00 £7,600.66

13] Questions from the public

Standing Orders were suspended at 8.40pm.

Questions concerning a litter pick, moving of a bus stop on Bridegate Lane and the Borough Council dog warden service were raised.

The concerns in the village over the plans for development on the site of The Wharf were highlighted by a number of residents, with comments that moves that would introduce more visitors to the village should be avoided.

Standing orders were re-instated at 9.10pm.

The parish council then discussed their way forward and it was agreed members should meet to informally discuss the contents of a letter to be sent to each person on the electoral roll seeking their comments on what, if anything, should be proposed for the future of the site.

14] Date of next meeting was confirmed for April 8, 2008.

15] Agenda Items for Next meeting No items were put forward.

HICKLING WHARF

Views were invited on development at the Basin, for a representative sample to be published. Instead, we have increased the size of this issue to include all contributions in full, in alphabetical order of the writer.

From Hickling residents, name and address supplied

To the Parish Councillors

What we'd like to see at the Wharf/in the village:

Replacement/repainting of the railings/posts

Tidying up of the grassed areas/flower planting

Removal of the tufts of grass growing on the pavements

Changes to the village entries to slow vehicles down (without the use of road signs or markings)

Removal of the white lines on Main Street, (to slow vehicles down)

The owners maintaining the Wharf building from their own funds

Using the funds from Building Better Communities on Community projects (e.g. Table Tennis/Film Club, which have demonstrated that they can bring the village together)

What we don't want to see at the Wharf/in the village:

A car park

An increase in vandalism/theft/litter created by more people being in the village

A lot of money being spent on something that doesn't have a validated business case

A 'weekend' village for those who live elsewhere
Something that benefits those with other agenda's, not Hickling

An attempt to create something to rival Holme Pierrepont, Rushcliffe
Country Park or Rutland Water

The commercialising of the village

From a Hickling resident, name and address supplied

"Hickling? Oh yes I know Hickling alright. We used to go there all the time. I caught my first pike on the basin when I was a kid – an absolute monster, frit me to death it did. One of the farmers used to come round on this bike with his dog and collect the money off us. Can't remember his name now, but he was always whistling. Yeah, we got to know lots of people down there, either in the pub or down the canal – it was that sort of place you see. It was a real village with real people. Some villages are really nice but they're actually dead – like living in a museum. Hickling is only 15 minutes away but when you got there you felt you were really in the countryside – proper countryside. For a long time we were desperate to live there but I'm glad we don't live there now!

Well it's different now isn't it. I mean you can't move down there – it's absolutely rammed. It's just like everywhere else now – litter, traffic congestion. You can't even park your car there. There's people from all over the place. We don't know anyone there anymore. It's alright if you're into boats I suppose, or want to follow the crowds. Of course there's no fishing. All the water is churned up and dirty, the plants have been washed away and the wildlife's gone. Funny really because it was all supposed to regenerate the canal, not to spoil it. That's money for you though. Everyone assumes money is good. They got a big grant for it you see. The villagers were sold the idea and voted for it. Now some of them can't even get out of their drives at the weekend. Trouble is they forget it's only a small village – virtually one street. It's just not big enough to take all the visitors.

Do you know the farmers used to take their cows down Main Street?
Yeah, I know, you can't imagine it now can you? Or imagine trying to do Scarecrow Weekend now. Last time we went there was the last

Country Fair they had. Blimey, that would be six years ago now. Shame. I think that they should have used the wharf building for some sort of local shop – you know, something that would have actually benefited the village and kept the character intact."

From a Cropwell Bishop resident

To the Chair of Hickling Parish Council

Yesterday, having cycled from Cropwell Bishop to Hickling, I became involved with some Hickling residents who told me about the possibility of a tea shop by the Basin. It seems an excellent idea to me – one that I feel would be welcomed by many cyclists and walkers who visit the village. Also, it could be the focal point for those interested in the history of the canal at Hickling.

I wish the plan every success.

From Cherry Bishop

Dear Hickling Residents,

As the owners & Custodians of the Wharf & surrounding Green in your village, we wish to reassure you that our intentions are honourable. We only want to preserve & take care of The Wharf, for future generations in the hope that the village & local community will be able to enjoy & benefit from the restored historical Warehouse & The Green space around it.

We feel a huge responsibility to do our up most to secure the best possible future for this unique & special building. We have not taken the decision lightly to work with the dedicated group of individuals, who only have the interests of the community at heart. It is possibly not appreciated how committed everyone involved is & how much personal time & effort has been given by all who have contributed to this project, to finally arrive with the offer of the EMDA Grant on "The Table" This opportunity may not come again.

As a family we care very much about the local community & any impact this may have. We have lived in The Vale since before 1600, so we understand how fragile village life is & how vital it is to have a

**Village Hall 150 Club
Draw 3 March 2008**

£80	32	Mrs S Watson Pudding Lane Hickling
£60	74	Mr J Collishaw Malt House Farm Hickling
£40	49	Mrs C Benson c/o Meadowcroft Bridgate Lane
£20	178	Mr and Mrs Malpas Church Gates Hickling

MOBILE CAR VALETING
smart-valeting.co.uk

Mini to Full Valets

Fleet & Contract Work Worcester
Interior Dirt Extraction
Cigarette Carpet Burn Repairs
Exterior Paint Correction
Glass Stone Chip Repairs
Professional Detail Finish
New Car Care Products Now
Available On Our Website



Card Payments Available On Site

Mobile: 07949 518366
Office: 01664 823009

Trent Upholsteries Ltd.

Master Upholsterers

Reupholstery Specialists and
Manufacturers of Quality Upholstery.
Member of the Association of Master Upholsterers.
Select from our large range of fabrics and trimmings.
Traditional and modern upholstery methods.
Hand built upholstery to your measurements using beech
frames and coil springing.

**Trent House, St. Peter's Street,
off Ilkeston Rd. Nottingham. NG7 3FF.**

**Telephone: 0115 978 6699
Fax: 0115 978 6737**

Visit our showroom or phone and ask for advice.
Private car parking.

thriving community.

The canal connection is also relevant as our six great grandfathers ago was one of the original Navigators who planned the route the canal was to take through the vale section.

Our personal link with Hickling goes back 67 yrs, when my grandfather purchased The Wharf, Wharf House & surrounding land, from Sir Albert Ball of Nottingham, the Father of Albert Ball VC The world War one Flying ace.

For many reasons the family were unable to live at the wharf, mainly due to the premature death of my Grandfather. Subsequently the property was only let to two Tenants during those years, The Parr & The Faulks families

In 1990 The Faulks family bought Wharf House & the Land with it & for sentimental reasons we retained The wharf area as you know it today. With the dilapidated state of the building causing concern in the early 1990's, we put in a planning application to turn it into a house. We were refused being told consideration would only be given for non residential ie- A Cafe, Shop or a caravan Pull-In. We accepted this & moved on.

At this point for the second time The Wharf was restored, making it water tight & Structurally safe. The first time being in the 1950's when the east wall collapsed, had my Grandmother not rebuilt it, The Wharf would have been lost along with the old windmills which once stood in the village.

It is our wish to make The Wharf a special place for all, in particular for those who live in Hickling. We hope that together we can all take a flexible approach to work out a solution to achieve a worthwhile outcome for the future of this important local landmark, in your beautiful village.

Yours Sincerely
Cherry Bishop.

From Brendan and Dorothy Clarke

THE HICKLING WHARF AREA.

Having attended all the public meetings concerning the Hickling Wharf Development we have come to the following conclusions :-

- 1 The premise for the Wharf Development appears to be that it was highlighted as desirable in the Parish Plan exercise. However bearing in mind the small number of people who participated in the

Keyworth Optical Ltd

Community Opticians

Friendly, professional eye care

Moschino - D&G - Hugo—Oasis - etc



75 The Parade
Wolds Drive
Keyworth
0115 937 3635

THE VALE PHYSIOTHERAPY And Sports Injury Clinic

Established 1986

Practice Principal H. Elizabeth Smith
CARNÉAL COTTAGE, MAIN STREET, HICKLING, MELTON MOWBRAY LE14 3AH

Attractive new facilities at long-established practice in the village

Now consists of a team of six chartered and state-registered physiotherapists with a wide range of individual specialisms to provide treatment for

**SPORTS INJURIES; NECK and BACK PAIN;
HAND and FOOT PAIN; WOMEN'S HEALTH;
GENERAL REHABILITATION;
ACUPUNCTURE FOR PAIN RELIEF**



Telephone/fax 01664 822234 for an early appointment

exercise was there a mandate to put forward the Wharf Area proposals. The village has evolved, thrived and developed wonderfully well over decades without anyone previously trying to impose a tight 'tick the box' culture onto its community.

2 To contemplate spending **£350,000.0 of public money** on rather uninteresting building (all be it Listed) without any guarantee of some benefit or return we think is ill advised.
Who would be advising and monitoring how the money will be spent?

Those who would be **accountable** financially and otherwise (Parish Council ?) for spending the money should fully explain :-

- (a) How the village community as a whole could **benefit** from this expenditure. Will Hickling achieve £350,000.0 worth of benefit out of the proposals ?
- (b) What will be **sacrificed** to achieve the benefits? Every sensible person knows that 'you don't get something for nothing out of life' !

We remain unconvinced by the whole exercise so far and very disappointed that something being carried out for the first time under the auspices of the Parish Plan should have been so woefully handled.

Brendan and Dorothy Clarke

From Tina Combella

Dear Hickling Residents

The Hickling Wharf – a tranquil retreat.

I am writing to you as author of the invited application to the Waterway Regeneration Fund which, as a Parish Councillor, I perceived as an opportunity to be investigated on behalf of the Parish and in line with the wishes of the owners. The current debate is very healthy bringing many peoples views out into the open.

There is now a real possibility of obtaining funding for a local project to open the Warehouse, and utilise the Wharf space and canal area. The main object of the exercise would be to improve the amenity for local benefit.

Unfortunately I feel I again have to address this question of tourism – the fund is not a tourist fund – its a waterway regeneration fund – however any alteration, development or improvement in the locality, has an economic impact. There is always impact upon existing and future local business, environment, visitor experience (tourists) and residents. This impact is measurable and has to be recorded whether we are talking about a new road scheme of the current proposition. Therefore although the application has had to meet certain criteria (tick boxes) this was only in order to record the existing and any possible alterations to environmental and economic outputs and outcomes not targeted at tourism as an objective.

I further reassure you that I have had it confirmed repeatedly by EMDA, the funding body, that so long as economic outcomes do not suffer, that alterations and emphasis of details within the proposals are not a problem.

So let's consult:

Suggestions:

Tea shop or Community Shop

Parish Plan volunteers have already been investigating Community shops in the light of the impending Kinoulton shop closure. I visited Normanton on Soar Community Shop details of which I displayed at the open evening. As part of the consultation process a trip could be organised to visit the shop and meet the organisers – they were very receptive to the idea and it would certainly be very interesting. EMDA are aware that this area of the application is still fluid. There would have to be a rental contribution to the Wharf business plan in order to ensure the sustainability of the site.

Office Space

Rental of a small office would provide income for the Wharf business plan to ensure sustainability. A waterway based employee seen appropriate having knowledge of canal operations – however this may no be a

possibility. Having recently appointed a new Parish Clerk the idea of their office being based at the Wharf would make them readily accessible to residents. Other potential tenants could be found in education, museum or gallery curators. EMDA have no strong feelings with regard to this element so long as a rental income is generated.

Car Parking

Highways are aware of our problems and have made helpful indications that they would not be averse to grass-crete laybys at the entrances to the village (this is something to discuss as planning would be required)

If the slipway were to be resited or removed and provision be made for canoes or rowing boats to be lowered into the water, then additional carparking would become available at the rear of the Wharf. There may be sufficient for 10 or so vehicle spaces.

Village Green

The vision is to retain the green space at the front of the warehouse building for use as a village green – this could possibly have a small childrens play area or picnic tables or simply be left (this is something for discussion)

Alternatively the whole site could be turned over to car parking. Not aesthetically pleasing but very practical (planning would portably be an issue)

Exhibition space – museum/information centre/gallery

To provide as many options for the space the term 'Waterway Discovery Centre' has been used to encompass, historic exhibitions, ornithological exhibits, presentations and meetings, local plant life, displays by local artists and school art works and hopefully many more ideas with the canal and water as a background. (lots to think about and many ideas to discuss – your input would be invaluable)

Lengthman's Hut

It is hoped to refurbish the hut as a point of historical interest and

Jo Spinak – V.T.C.T. dip
'VIVA' MASSAGE THERAPY

Sports & Aromatherapy Massage
Indian Head Massage

Based in Hickling and treating Leics/Notts clients
(Mobile treatments also possible)

**TREAT YOUR BODY TO THE CONDITIONING
IT DESERVES!**

TREATMENT PRICES:

Spots Massage:	Legs or Back: £20	Full Body: £30
Aromatherapy Massage:	Legs or Back: £20	Full Body: £35
(Hot Stone Treatment: Additional £5)		
Indian Head Massage:	£20 (Soothing massage to the upper back, arms, neck, scalp, face)	

To book an appointment, please call: 01664 822795 or 07967 212581

Under Wraps

LINGERIE NIGHTWEAR SWIMWEAR

OPENING EARLY FEBRUARY

Exciting new lingerie boutique in Keyworth

An enviable array of lingerie, nightwear, swimwear
and hosiery for all shapes and sizes

Trained staff offering a professional fitting service
in relaxed and comfortable surroundings

importance on the canal. This would have to be a permanent exhibition site.

Lease

There would have to be a legally prepared document protecting the interests of the Parish and the owners. Terms would have to be agreed but nothing less than 25 years could even be considered and it has already been discussed that an option to renew would have to be included. The break in the lease gives an option for both sides to consider whether the terms still remain favourable. However this would have to be for lawyers to advise.

Trust

The Parish Council as representatives of the village would appoint trustees to oversee the running and maintenance of the building – these should comprise residents and professionals and owners – however again this is for lawyers to advise.

I hope this will have helped to allay fears and maybe provide a source of interesting ideas. There have been many suggestions lying around already but it seems we are all agreed that Hickling basin and canal provides a beautiful, peaceful rural retreat – and none of us want to see that altered. But we must make sure we control its future and move forward.

Booths

Finally we must not forget that the Wharf and Warehouse are privately owned and within the letter of the law the owners are free to do whatever they want with the property subject to planning. They have offered the building to the Parish Council as they feel and trust the Council to source the funding and use it for the best interests of the village community. Remember the owners could always decide to offer the site elsewhere – to another organisation, also able to access funding, who could see it as an entrepreneurial opportunity. I therefore

feel it important this avenue is fully explored by the Parish Council. There appear to be areas emerging of common ground and it would be a shame if the process of debate, now begun, were to falter.

Regards

Tina Combellack

east midlands
development agency

The British Ecological Society, 27, W.F.
House of Commons
London
E5A 4DAA

Our ref: PH/2002/

20 February 2003

Dear Sir

Waterways proposal at Hickling Wharf

Thank you for your letter dated 28 February requesting information on an application from the Hickling Parish Council for funding towards a restoration and development project in Hickling, Leicestershire. The application for funding was submitted as part of the grant: Eden Waterways Fund which was launched in July 2001.

The Waterways Fund is designed to support schemes over a three year period to deliver against the categories: waterways destination projects, restoration projects and regeneration, large scale project development, and waterway transport schemes. There was significant interest in the region and the Fund has been well subscribed to, leading to a programme that should improve the overall economic value of waterways in the East Midlands.

An expression of interest and subsequent application for funding was received from Hickling Parish Council in the latter part of 2001 and in January this year we entered into negotiation with the applicant. Hickling Parish Council to agree conditions necessary to secure any funding from Eden. Any funding would vary on a contract being agreed with the applicant. A draft contract is currently with the applicant and we have not yet received a response. The Parish Council should be at a cost to advise you on their response to that agreement, which is dependent on planning permission being granted for any proposed development in the village. The value of funding has not been given by Eden.

Eden will not be consulting with village residents on the nature and scope of the proposal. Any advice on project sponsors in this case the Parish Council to ascertain this via a consultation and seek agreement with affected villages.

I hope the above will answer your queries. Please do not hesitate to contact me again if you have further questions.

Yours sincerely
P McKerr

From the Frasers

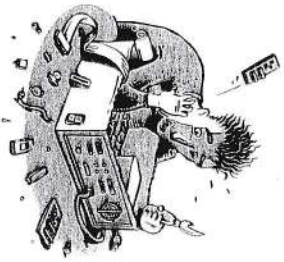
The Hickling Wharf Area: As a family we would all like to keep the village as close as possible to its working, farming roots. It would be great to see the Wharf area lively with a successful pub and maybe a Community Shop/Post Office, especially as it seems likely that the Grantham Canal will be fully restored/reopened at some time in the future. We could be a great part of this in the context of a canal which 'meanders through quiet countryside,' perhaps mooring for a couple of narrow boats, support for wildlife etc. However, we all feel very strongly that we do not want any kind of tourist development to be based in Hickling—this would radically change the village and spoil its integrity. Turning down tourist development does not mean that the village or countryside will die and other points along the canal (Holme Pierrepont, Cotgrave & Grantham) do want this kind of development - we just don't feel it has a place in Hickling. The Frasers.

From the Grantham Canal Partnership

I refer to the 16th February public meeting and subsequent 'Have Your Say!' leaflet and write, on behalf of the Grantham Canal Partnership and as someone involved in the Hickling Wharf project since last June, to try and help answer a number of issues that have been raised:

The Grantham Canal Partnership

- 1 The GCP is the 'umbrella' organisation formed in 1997 to coordinate the efforts of the principal parties concerned with the future of the canal. It is "committed to promoting the sustainable restoration of the Grantham Canal to full navigable status and doing so in such a way as to conserve its character and the environment and enhance the communities along its 33-mile corridor"
- 2 This objective also represents implementation of the Government's policy on Canal Restoration - as specified in 'Waterways for Tomorrow' [DETR, 2000]
- 3 The GCP is chaired by Tony Wilkinson - who is passionate



Installing new hardware and software
Setting up networks and broadband
Upgrades and Service Packs
Anti Virus measures

Call Alan Danbury on
Home: 01664 823278
Mobile: 07767 386701

alan.danbury@long-clawson.com

Friendly, local service.

PC Problems?

LADY FRIDAY

Are you short of TIME?

I could support you when you're working or on holiday

HOME

*Water plants, take mail in & generally check all is well
Monitor builders, decorators or maintenance personnel
Shopping - Delicateries - Collections*



JUVENILE & SENIOR RELATIVES

Meet children from school or take them to their recreational activities
Supervise elderly relatives to ensure they keep appointments, catch trains or whatever*

PETS

*Regularly, or occasionally, walk your dogs & give them their meals
Supervise & feed other pets including horses & cats*



Do not hesitate to ask - I am reliable and versatile!

References available on request, inc CRB*

Angela Sallis, The Olde Forge, Hickling 01664 822597
angela.sallis@btinternet.com

about the countryside, rivers, trees, wildlife ... and cricket. On assuming the role in 2004, one of Tony's first acts was to walk the entire canal and talk with local residents: he has re-visited on many occasions

4 The GCP Executive is made up of representatives of the 3 Counties and 3 Boroughs / Districts through which the canal flows, British Waterways, Natural England - guardians of the environment and the Sites of Special Scientific Interest along the canal, the Grantham Canal Society and the Inland Waterways Association. Active sub-groups include representatives of a wide range of environmental / wildlife interests and users of the canal

5 Hickling's interests are represented on the Partnership by Notts, County Councillor Kay Cutts, Rushcliffe Borough Councillor David Bell and a Parish Council Chairman - Frank Thomas of Holme Pierrepont & Gannston

6 Since the appointment of a Grantham Canal Regeneration Manager (Kevin Mann) in 2005, the GCP has made presentations to most of the Parish Councils along the route, including Hickling - following which Kevin was invited to take part in your Parish Plan consultations of 2006/07

7 Notwithstanding the above, the GCP would welcome more regular and closer community liaison ... and the resurgent Grantham Canal Society is actively engaged in enhancing its own links and communications (modernising the website, relaunching a newsletter etc.)

Hickling Wharf as a 'hub' or quiet 'stop off' / mooring point?

1 The term 'hub' has indeed been used in connection with Hickling - but needs to be seen in the context of the Grantham Canal. We are not talking of creating another Skegness, Foxton Locks or, nearer home, Gunthorpe!

2 Especially since the upgrading of the towpath, the Grantham Canal has become one of the most popular long-distance walks / bike rides in the East Midlands and many people enjoy 'popping into the Vale' for a rural stroll and maybe a bite to eat. Others are increasingly escaping London via Kings Cross to enjoy weekend breaks,

without the car, bringing business to our local pubs and guest houses. You see who and how many they are - the former are typically middle-aged couples, a few anglers [the Canal is generally too overgrown], dog walkers, birdwatchers and some people specifically taking advantage of the good surface for pushchairs and wheelchairs. Canal-side facilities need to aim to satisfy both this modest usage and the local communities' wishes

3 In terms of numbers of visitors, there is a British Waterways Footfall Counter at Hickling, which keeps a count of relative numbers of 'body movements'. It can't differentiate between single and return trips but it is tall enough not to count dogs ... and it does give comparative figures between locations, years, months and even times of the day. This is how we know that the towpath going east from Hickling has circa 50,000 'movements' a year (the vast majority of which are likely to be return trips) and that 2007 numbers were 14% down on 2006 - due, it appears, to the relatively poor weather in the second half of the year

4 It's an inescapable fact that, if visitors to the Vale wish to combine a canal-side walk with a drink, there are only three places where the two are immediately adjacent - Hickling, Redmile and Woolsthorpe. Future Grantham Canal newsletters and the website will increasingly feature the full range of pubs, restaurants and tea shops in the area ... and we plan to do more to promote circular walks ... but we can't escape from the fact that Hickling, with the only extant canal basin and its ducks, is one of the most attractive destinations. By comparison with the vast majority of waterway venues, however, it will remain a quiet 'stop off' / mooring point!

Hickling's role in the Canal's Restoration

1 The Grantham Canal is a 200-year old waterway that's been closed for over 75 years. It's the nature of such structures that they deteriorate if not maintained - viz. the 'dry section' towards Cropwell Bishop and the state of the Hickling - County Boundary section, restored as recently as 1994

2 Given its objective of 'conservation / restoration / regeneration' and its concerns about the environment, the GCP has been anxious to take the correct steps. A thorough Ecological Impact Study of the whole

of the canal was therefore commissioned during 2006/07, from a specialist ecological consultancy based at Sheffield University. This study looked at a wide range of management options - from 'do nothing' to restoration suitable for 14ft-wide craft. It concluded that keeping the canal as it is is not an option, as it will continue to decline ecologically - even the rare plants in the Sites of Special Scientific Interest (SSSI) on the canal would be better protected if the environment was more actively managed, the channel carefully dredged and a regime of controlled boat movements introduced!

3 Subject to the findings of a 'Green Infrastructure' study that is just starting, the GCP's ambition is to secure an alternative link to the River Trent, somewhere between Lady Bay and Radcliffe ... and for that to connect through to marina and boatyard facilities (creating new jobs) in the former Cotgrave Colliery area. This would be a well-used section of navigation and Cotgrave would become a modest waterway 'hub'

4 East of Cotgrave and the further the canal gets into the Vale, navigation would have to be controlled - in terms of the number of boat movements per day, speeds etc. - to protect the environment. There is precedent for this elsewhere on the network e.g. on the beautiful Montgomery Canal. The Grantham Canal east of Cotgrave could also be compared with the Ashby Canal north of Hinckley - another 'dead-end' canal incorporating SSSIs and of similar length

5 It's to assist in keeping the water open and prevent reed bed regeneration - as well as encouraging 'healthy pursuits' - that we would like to develop canoeing along the canal. Most canoeists prefer moving river water - so demand is unlikely to be great - but we would encourage the establishment of canoe and cycle hire facilities in the area

6 Finally, the canal towpath is an invaluable facility for those forced to view the countryside - or fish - from wheelchairs. With the greatest respect, it's time that adequate access, refreshment and toilet provision were available, so that the canal and Vale may be enjoyed by all

The project's progress

1 The most important thing now is to look ahead but I believe that a quick look back will explain much of where the project stands - in particular, why the pace of developments has been faster than anyone

would have imagined when your Parish Plan was put to bed:

- o At the 'Grantham on Water' Festival at Woolsthorpe last Spring Bank Holiday, Kevin Mann was approached by Cherry Bishop (nee Booth) - who expressed the Booth family's desire to make the Hickling Wharf and Warehouse formally available for village community use
 - o Only a fortnight later, on 10th June, your Parish Plan was launched at your Village Fete. Chris Tizzard (then Chairman of the Grantham Canal Restoration Society and a former Hickling resident) and I attended on behalf of the Grantham Canal ... and two of the Booth family attended in their own right
 - o On 11th June, in the light of the above surprise development, the Chair of your Parish Council invited representatives of the Booths and the GCP to an exploratory meeting on 2nd July
 - o On 12th June, completely 'out of the blue', *emda* announced an unprecedented *Waterway Regeneration Fund*, worth £5 million over the next 3 years. The scheme had very strict criteria, with Category 2 consisting of '**Restoration projects - which remediate redundant or underused buildings next to waterways for employment or commercial uses**'. The deadline for 'Expressions of Interest' was 31st July
 - o Given the declared objectives of your democratically arrived at Parish Plan and despite the inevitable workload involved, the 2nd July meeting felt that Hickling had to 'go for it!'
- 2 Securing grants under such schemes is a major undertaking and has involved an enormous amount of voluntary time and effort. I have been involved throughout the last nine months and can assure you that I am fully satisfied that all action to date has been with the best intentions, against the background of the Parish Plan and given the information and resources available at the time

3 I am led to believe that there were no fewer than 180 'Expressions of Interest' to *emda* - of which 90 got through to the full application stage and only 27 (15%) have been awarded grants. I suggest that the fact that your Hickling Wharf Steering Group secured some £350,000 from an East Midlands pot of only £5 million is a major achievement for the village!

4 As taxpayers we should be reassured that *emda* (and similar bodies including English Heritage) doesn't dispense grants lightly: *emda* insists on sustainable 'economic outcomes', whichever of its funds you're talking about. Hence the need for a community shop / tea shop and local job creation, if the Wharf and Warehouse are to be maintained for Parish use, the Lenthman's Hut restored etc. English Heritage won't 'maintain the buildings' - as someone has suggested: the world doesn't work like that

5 In some respects, it is unfortunate that such significant actions to implement your Parish Plan have necessarily been at such a pace ... and ahead of finding solutions to the village's undoubted parking problems - but that's the nature of opportunities. Given the direction of the national economy and the impact of the Olympics on the funding of charities and communities, I wouldn't recommend waiting for the next *emda* invitation!

Alternative Suggestions

- 1 The Hickling Wharf scheme has always been intended to maximise Parish benefits and needs to reflect any changes in circumstances and brief e.g.:
- o the amount of space in the Warehouse is strictly limited and its contents need to be prioritised. If the closure of the Kington Post Office raises the attraction of a community shop / tea shop (along the lines of Normanton-on-Soar), we should endeavour to provide that
 - o the proposed office for the Grantham Canal Regeneration Manager was, in part, designed to help increase the project's rental income. Since the New Year, alternative arrangements have been made for Kevin Mann and the space could now, if required, be available for your new Parish Clerk

House/Pet Sitter

Horse rider. Reliable, experienced.

Refs available.

Public liability insurance.

Tel: 01 509 674761

o the Plough Inn is now 50% owned by British Waterways - which, hopefully, demonstrates their commitment to the village - but its pre-Christmas closure showed that its continued existence shouldn't be taken for granted. I suggest that any Parish scheme should seek to complement plans for the pub and the use of its grounds

o Finally, in the same way that an holistic scheme could be used to support your pub facility, it should be borne in mind that the active management of Hickling Wharf could also support the existence (even improvement!) of the village's limited bus service

Other Concerns

- 1 The intention throughout, of the Hickling Wharf Steering Group, has been that the management of the Wharf will be in the hands of a Charitable Trust established under the 'umbrella' of the Parish Council ... and that the legal agreements will be for a minimum of 25 years and renewable. No one will be in a position to 'run off with public money': *emda*, your Parish Council and the Trust will see to that

I hope that the above information helps to clear up a number of the queries raised recently. Please be assured that the Grantham Canal Partnership is committed to working closely with all the canal-side communities, to seek the optimum way ahead ... and looks forward to hearing the outcome of your debate

Peter R. Stone
Honorary Secretary
Grantham Canal Partnership

From Rural Community Action Nottinghamshire

Rural Community Action Nottinghamshire (RCAN) has been involved with the parish and the community of Hickling for some time. We have in particular been involved in the development of the parish plan and would as a matter of course support the development of projects arising from the plan, and indeed any project the community identify of value for the community. We specialise in community consultation and engagement, as well as governance and identifying resources to develop projects. We have been involved on an advisory basis with the development of the application to **emda** to fund the development of facilities at the basin.

I have only today seen the leaflet which urges residents to Have their Say and would like to provide information which may be of help to residents in addressing the issue of potential developments at Hickling Wharf.

1. Although the building is in private hands, it is proposed to lease it on a long term lease to a body of trustees drawn from the village. This would make it in effect a community facility.
2. All the options outlined in the leaflet are possible, as long as they provide the economic outputs needed by *emda*. When, as has been outlined by Peter Stone of the Grantham Canal Partnership, the funding became available, there was only a short window of opportunity to put the application in. The group which did this, identified what was needed from current information, such as the parish plan, the number of visitors to the canal, which, more than likely, represents a large proportion from the community, and what was felt would benefit the village. As the project had not been developed before the funding became available there had been no time for consultation.
3. Residents now have a chance to identify how they would like to take this forward.
4. Funders will be keen to help the village make the most of the Basin, in a manner compatible with the history, heritage and conservation status of the area.

Carola Jones
Senior Rural Officer

Hickling Wharf

Hickling a hub (or is it hubbub?)

Is there any way the

Canal can stay the

Kindly haven for

Life, wild and human,

Inspiring passion and delight?

No regeneration needed to fix our

Gaze on the serene and tranquil vista.

Wharf or marina?

Halcyon days

Acknowledge the changing seasons.

Reckless development will impair our

Freedom.

From Hazel Watson

I would like to start by saying thank you to those people who have invested a significant amount of time and effort to make this fantastic opportunity available to the village. Having said that, I feel angry and disappointed with the response of some of the residents of the village to the work that has been done to date and to the opportunity which stands before us. I have to admit that at the initial meeting at the Village Hall, I felt shocked and uncomfortable by the negative, and at times, quite pointed and personal comments which some of the villagers made during the meeting.

There seems to be an emphasis from some villagers on why we shouldn't move forward with this proposal. This is reinforced by the leafleting which has been excluding some members of the Parish Council, and is clearly trying to influence the views of the village as a whole. One example is the view that the development would encourage more "tourists". What are "tourists" in this context? Walkers? Nature

lovers? Fishermen? If so, then probably the majority of us fall into this category!

I can't help but feel that this type of behaviour can only undermine the community spirit which is one of the great things about living in Hickling.

Finally, I do hope that the consultation process we are about to go through ensures we get a fully representative set of views, and not a "selective" version from those who shout loudest. I think we are very lucky to have been offered this funding which, if used in the right way, can only enhance the facilities for the village residents and visitors alike. I believe that the village as a whole should think very carefully before rejecting this fantastic opportunity as it probably won't be offered again.

For your information I am copying this letter to the Parish Council.

Hazel Watson

From Jim Woolley

The proposed development of the Hickling Basin area is proving to be very controversial, mainly, I suspect, because of the lack of consultation between the various representative bodies, ie there has been virtually no information given to the Parish Council from the Village Plan committee, indeed even the members of that committee claim to have been bypassed.

From one point of view it's like putting the cart before the horse. Until adequate parking facilities have been found, close to the above venue, people would continue to park as near as possible, causing even more congestion to an already congested area. Even as things stand at the moment, it is very difficult for the farmers at harvesting time and lack of sensible parking makes it almost impossible for the emergency services to proceed unhindered.

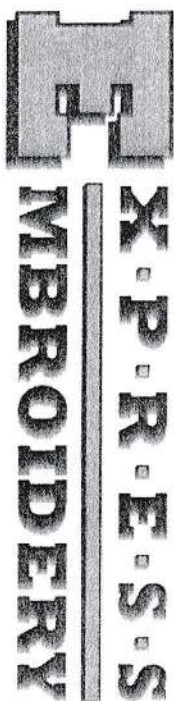
Before proceeding with the project there are other considerations which

should be thought out. What would be the benefits for or the detriment to the village or would it prove to be just a white elephant requiring subsidy after subsidy. I, personally, would have to be involved in an in-depth assessment and be well satisfied before I could support this project.

Five of the present Parish councillors are relatively newcomers to the village. What they should remember is that the ex councillors of the village together with their forebears fought long and hard to retain it as a village with its rural atmosphere. I am afraid if we are not careful we shall soon become just another suburban satellite.

Finally there are two things which need to be pointed out. (1) None of the present councillors have faced an election for their position. If there had been an election maybe the faces in the council would have been totally different with different priorities for the village. (2) The residents of the south end of the village should not be complacent. What could prove to be disruption at the north end could soon be an aggravation at the other end.

Jim Woolley, Parish Councillor



Corporate, Leisure & Work-Wear Suppliers

Sophie Richardson

Partner

www.express-embroidery.net

Office: 01664 822748 Mobile: 07733 226140

Linford House, Bridgegate Lane, Hickling Pastures, Melton Mowbray, Leicestershire, LE14 3QA

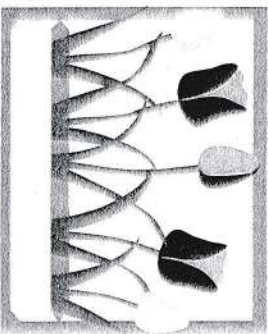
Village Directory

150 Club	Liz Vear	822562
Beavers	Sue Youngson	01949 81688
Bellringers	Anita Kirkman	822270
Brownies	Julie Norman	01949 81091
	Emma Scarborough	823481
Church Choir	Anita Kirkman	822270
Conservative A.	-	
Country Fair Committee	Margaret Woolley	822319
	Bob Naismith	822191
Cricket Club	P. Parkes	822370
	JD Walker	822244
Cubs	Jean Roper	822416
Gardening Club	Mr B. Baxter	01949 81374
	Mrs B. Grundy	01949 81442
Guides	Alison Popplewell	01949 81604
Hickling Pre-School	Mary Smith	822559
Hickling Standard	see back inside cover	
Kinoulton Post Office (& newspapers)	Peter & Alison Davis	01949 81324
Kinoulton School	Mr Savage (head)	
Kinoulton School PTFA	Anita Wilkinson	01949 81256
Nottinghamshire Police		0115 945 5999
	PC John Neale	ext 6264

Open Gardens	Jane Fraser	822569
	Becky Malpas	822818
Pantomime	Bob Naismith	823293
Parish Council	Maggy Jordan (Clerk)	822088
Parochial Church Council		
	Rector	Stephanie Fahie
	Churchwarden	Margaret Wood
		John Bloor
	Treasurer	David Malpas
	Secretary	Dorothy Chahal
Save the Children Fund	Rachel Henson (chair)	01949 81453
	Angela Sallis (sec.)	822597
	Molly Collishaw	823115
	Barbara McEwen	822834
	Liz Smith	823428
Scouts	Glyn Pilkington	823258
Silver Jubilee Club	Maureen Jackson	01949 81325
Sunday Club	see PCC	
Toddlers	-	
Village Hall	Roger Stanley (chair)	822661
	Tim McEwen (sec.)	822834
	John Robinson (treas.)	822762
	Phillipa Jacks (bookings)	823622
Women's Institute	Jean Spencer (Pres.)	0115 937 5035
	Gweneth Cane (Sec)	0115 937 3970
	Peggy Herrick (Treas)	822042

Diary

18 March	7.30	Village Hall	Film Society - Amelie
21 March	12.00	Up. B'ton	Three Parishes Walk
1 April	7.30	Village Hall	Film Society - Atonement
7 April	7.00	Village Hall	Youth Group
8 April	7.30	Village Hall	Parish Council
12 April	7.30	School	Friends of Southwolds Spring Dance
15 April	7.30	Village Hall	Film Society - Notes on a Scandal
29 April	7.30	Village Hall	Film Society - Pride and Prejudice (1)
1 May	7.30	Village Hall	Film Society - Pride and Prejudice (2)
4-5 May	10-4.30	Kin Vill Hall	Art Exhibition
13 May	7.30	Village Hall	Film Society - The Counterfeiters
13 June	6-8	Marquee	Children's Disco
14 June	7.30	Marquee	Basin Bhaji
15 June		Fayrefield	Country Fair
8 Sept		Village Hall	Table tennis re-starts



The Hickling Standard is printed by Southwolds School Reprographics Unit
reprographics@southwolds.notts.sch.uk

Hickling Standard.

Extra Copies - Order Form.

I would like to order _____ extra copy/copies of the Hickling Standard.

One year's subscription for one extra copy is £3.
 I enclose £_____ in payment for 6 issues.

Name: _____

Address: _____



Copies should be collected on publication from Maggy Jordan
 Please return this form to

Maggy Jordan, Ivy House, Main Street, phone 01664 822088

Hickling Village Newsletter - Committee

Chairman; Tim McEwen - Tel. 8222834 or tmcewen@globalnet.co.uk
 Treasurer/Advertising; Andrew Terry } Tel. 822088 or
 Copy & Secretary; Maggy Jordan } a.terry125@btinternet.com
 Copy Collection; Jane Fraser - Tel. 8222569

Please get in touch with any of us if you have any comments or suggestions.
 We would welcome any contributions for future issues - articles, opinions,
 reports, recipes, poems, brain-teasers - whatever you would like to see in
 print! WE NEED YOUR HELP!!!

2008 Copy Dates:

June/July: 15/5/08

Aug/Sept: 15/7/08

Copy must be received before these dates to guarantee its appearance.
 Please note that the committee reserve the right to edit or omit any material
 submitted. Opinions expressed in published articles remain the
 responsibility of the author. Articles may be published anonymously but the
 committee does need to have details of authorship before publication.

If you are submitting articles ready for publication - (either typed or in
 computer format) we would be grateful if you could send it in A5 size.
 If you are sending contributions on a computer disc please save as
 Microsoft Word or Microsoft Publisher 2000.

COPY IN ANY FORM WILL BE GRATEFULLY RECEIVED!

e-mail address - a.terry125@btinternet.com

- please make sure that attachments are sent in Microsoft Word or
 Publisher compatible formats - thank you!

Handwritten Contributions.

If you have handwritten contributions please pass them for typing to:

Maggy Ivy House, Main Street or
 Hazel Copperoaks, Bridegate Lane or
 Jane Mill Lane Cottages

Otherwise please continue to pass any contributions or ideas to any of the
 other committee members. Thank You!

Advertising Rates (revised 1/1/02). (one advert for one year - 6 issues.)

Front inside cover - £40 Back cover - £55

Quarter page - £15

Half page - £24

Full page - £36

(enclose payment with copy for the advert and give to a committee member before the copy
 date.) **Personal wanted/for sale adverts are FREE.**