



## Independent School For Children Aged 4-11 Years

To arrange a visit or to book a free, no obligation taster session for your child, please call **01949 811118**.

The Nursery Education Grant is available for Reception children.

**A personalised  
BEGINNING** to formal education

Website: [www.colstonbassettschool.com](http://www.colstonbassettschool.com)

Email: [info@colstonbassettschool.com](mailto:info@colstonbassettschool.com)

School Lane, Colston Bassett, Nottingham NG12 3FD



**COLSTON BASSETT  
PREPARATORY SCHOOL**

~ INDEPENDENT SCHOOL FOR CHILDREN AGED 4-11 YEARS ~

The

# Hickling Standard

Village Newsletter for  
Hickling and  
Hickling Pastures

Vol. 87 - April - May 2013

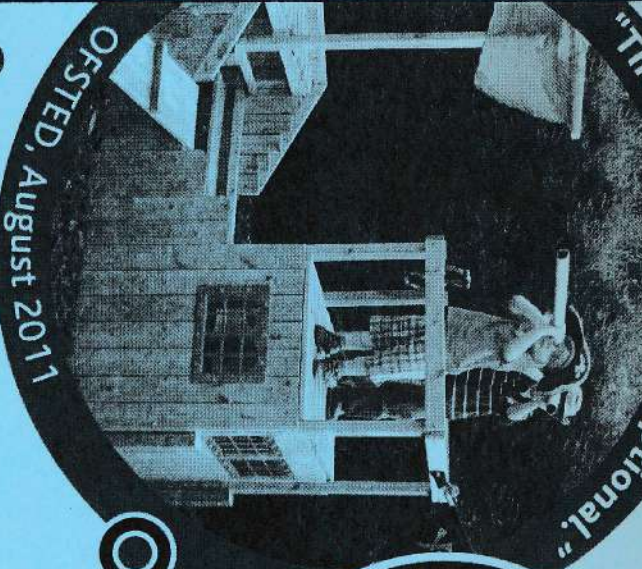


# Millfield Nursery

For Children Aged 2-5 Years

A very  
special place  
where children  
play, learn  
and thrive!

"The resources are exceptional."



OFSTED, August 2011

"A fantastic nursery, where children have great fun!"



"Exploring the environment is an outstanding feature."



OFSTED, August 2011

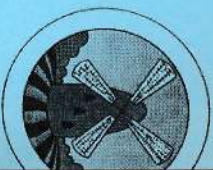
Open 8am – 6pm, 52 weeks of the year  
15 hours **FREE** childcare available

To discover for yourself how different we are, please call us  
for a chat or drop in any time to have a look around.

Telephone: **0115 933 4085**

Website: [www.millfieldnurseryschool.co.uk](http://www.millfieldnurseryschool.co.uk)

Tythby Road, Cropwell Butler, Nottingham NG12 3AJ

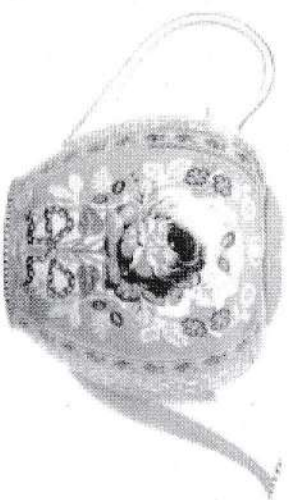


## VILLAGE HALL TEAS AT HORTOR'S

Hortor's have very kindly given the Village Hall committee the opportunity to run teas at the farm shop as part of our fundraising campaign. These will begin at the end of May.

To do this as well as possible we are currently collecting china to mix and match, and a few other things as well!

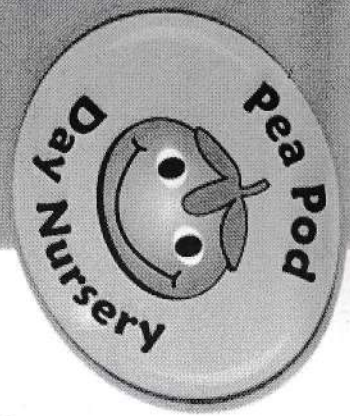
If anyone can offer us items from the list below we would be delighted.



Pretty teapots, cups and saucers, cutlery, tablecloths. We are also looking for a fridge or fridge-freezer and some tables.

If you can offer any of these, or would like to help in any way please contact:

Barbara McEwen: 822834 or Pauline Chell: 822835

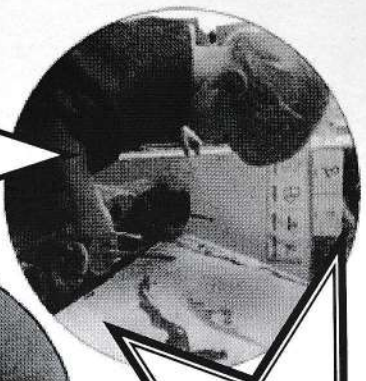


Open 7.30am – 6pm  
51 weeks of the year

**15 hours free**  
funding available

For children aged  
6 weeks – 8 years

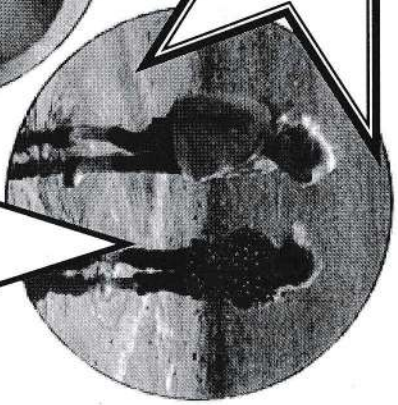
Ofsted  
March 2012



"Developing  
good skills to  
build on for  
their future"



"Children are  
cared for by  
enthusiastic  
staff"



"Nurturing the seeds of learning"

Pea Pod Day Nursery, Melton Road, Hickling Pastures, LE14 3QG  
(just off junction A46/A606)

For more information please call in for a visit,  
or contact Sandra on 01949 81522  
[enquiries@peapod-daynursery.co.uk](mailto:enquiries@peapod-daynursery.co.uk)  
[www.peapod-daynursery.co.uk](http://www.peapod-daynursery.co.uk)

# Hickling Plant & Produce Show

KENTUCKY FIELD



Sunday September

22<sup>nd</sup> 2013

## VILLAGE BREAKFASTS

We had quite a few new people to the March breakfast, including two of our local policemen who felt in need of a cup of tea. They got more than they bargained for, as not only did they enjoy a full English breakfast, but Carol managed to discover that one was working on his birthday.

A birthday cake with candles duly appeared and everyone sang "Happy Birthday to You." Clearly the police force doesn't have all the best detectives!



Keeping on the right side of the law ..... Happy birthday Mike!

## HICKLING VILLAGE HALL

# BREAKFASTS

SUNDAYS 7 APRIL, 5 MAY, 2 JUNE, 9am – 11am



**DO COME AND JOIN US, BRING YOUR FAMILY,  
MEET YOUR FRIENDS, OR MAKE NEW ONES**

Tel Barbara McEwen 822834  
for info or large group bookings.

## Village Hall Quiz

For those who fill their diaries up quickly, please make a note that the next Hickling Village Hall Quiz is on Friday 1st November 2013 at 7.30pm.

£4 a ticket from Pauline Chell - teams 4-6 players.

Perhaps a prize this time for the best "picnic" after seeing the gourmet selections last time.

Tel: 01664 820208

# **On The Sands Café&Deli**

7a The Sands, Long Clawson, Leics, LE14 4PA

We use only the finest quality locally sourced produce, all freshly prepared at our deli in Long Clawson.

Lunches \* Snacks \* Dinners \* Sandwiches  
Cheeseboards

Chocolates \* Fresh Coffees \* Meat & Pates  
Fresh Bread Daily \* Cakes \* Pastries

Large range of gifts updated regularly

Wide range of delicatessen products

Opening times:

Monday to Saturday, 9.00am to 4.00pm

Sunday, 10.30am to 4.00pm

Hickling Village Hall Presents

## **'Digging the Dead'**

(Money raised in aid of the new toilet block)

rescheduled for  
**Friday 12th April 2013, 7.30pm**

This is a talk and slide show by Peter Liddle, renowned for his work discovering Leicestershire archaeology.

Death comes to us all - but the way people deal with the dead has changed radically over the centuries. This illustrated talk is a survey of how this is reflected in local archaeological sites and finds.

*Peter Liddle has worked in Leicestershire archaeology for over 40 years as an excavator, survey officer, community archaeologist and head of the country's archaeological team. He was awarded an MBE for services to community archaeology and is an honorary visiting fellow at the University of Leicester.*

**Tickets - £3 each**

**Entry strictly by ticket only**

**Under 10 years free**

Tea/coffee and nibbles served at interval

**Tickets from Pauline Chell - 01664 822835**

**Everyone Welcome**

# DAVID HEWITT AERIAL SERVICES

TV/DAB/FM/DIGITAL  
AERIALS FITTED &  
REPAIRED



TV/DVD/VCR TUNERS

LOCAL SERVICE EST 32 YEARS



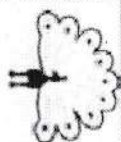
FREE QUOTES

ALL AREAS COVERED

SPECIAL RATES FOR PENSIONERS & DISABLED

Call 01664 820430

Corner Cottage, Clawson Lane, Hickling LE14 3AB



# P.C. COX PEST CONTROL

WASPS - MICE - RABBITS - ANTS -  
MOLES - RATS - ETC.

Tel: 01664 822238

Mobile: 07799 211924

pc0x99@tesco.net

www.pestcontrolpc0x.co.uk

*Do you need your car cleaning?*

*Do you have time to clean it? Do you have the patience to queue at your local car wash?*

*How does a personal service on your doorstep, by professionals, sound to you?*

If you think you should be one of our clients contact us for free quote on 0800 54 22 786 or visit

www.smartvalentinguk.com for more information



# LADY FRIDAY

Are you short of TIME?

I could support you when you're working or on holiday

## HOME



Water plants, take mail in & generally check all is well  
Monitor builders, decorators or maintenance personnel  
Shopping - Delicacies - Collections

## JUVENILE & SENIOR RELATIVES

Meet children from school or take them to their recreational activities\*  
Supervise elderly relatives to ensure they keep appointments, catch trains or whatever

## PETS

Regularly, or occasionally, walk your dogs & give them their meals  
Supervise & feed other pets including horses & cats



Do not hesitate to ask - I am reliable and versatile!  
References available on request, inc CRB\*

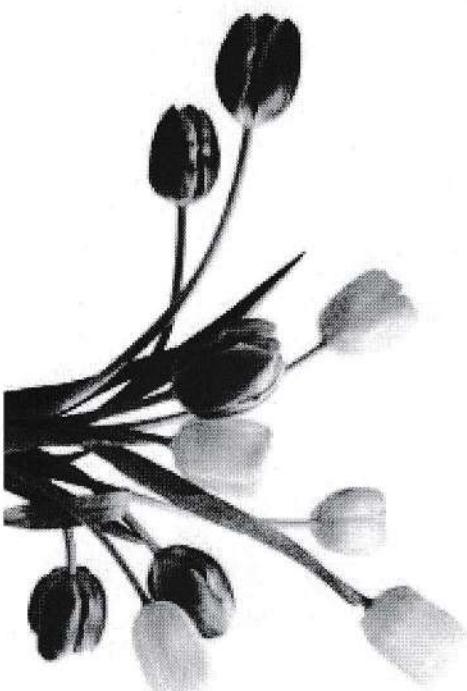
Angela Sallis, The Olde Forge, Hickling 01664 822597

angela.sallis@btinternet.com

## HICKLING VILLAGE HALL

The Valentine's Day Meal raised the astonishing total of  
**£568**

towards our fund raising for the new toilet block. A big thank you to everyone who supported the evening. Particular thanks to Pauline Chell and Carol Beadle who were the driving force behind the event, and their band of helpers: Liz, Vera, Gwen, Rosemary and Janet.



## Bed & Breakfast

in  
Hickling



A warm welcome awaits you to share my home.  
Telephone Angela on 01664 822597  
or my mobile 07712 443668

# ST LUKE'S CHURCH, HICKLING

## OPEN CHURCH 20/21 JULY 2013

**QUESTION 1 – DID YOU RECOGNISE HICKLING CHURCH?**  
**QUESTION 2 - COULD YOU RECOGNISE ALL THE AMAZING ANCIENT ARTISAN WORK?**

We are well into the planning stage for our next OPEN CHURCH. This is a Southwell Minster Nottinghamshire initiative when a large percentage of the churches will be open to enable people to learn about the historical aspects of their heritage. In **Hickling** we are fortunate to have such an interesting church and lucky to have an enthusiastic band of people willing to give up their time to promote it.

In the last magazine we said we were going to repeat the **challenge**.

### ONE KM OF 5 PENCE COINS

Which we thought would be lighter than a Mille of Pennies(!). We hope to raise enough money to replace the chickenwire door at the entrance of the church, especially as we have now been told the ancient main door is unique.

*(I do not seem to have many 5p coins in my change, so I am just throwing 1p, 2p etc into a box, will convert later and hope to fill at least one, or more, plastic cash bags).*

If you have any spare time that weekend we would welcome more help. Please contact any member of the PCC. If you would like to have a stall, or want to share a good idea, do say. If you can bake a cake, give us some plants to sell, bric a brac or tombola prize, do say.

LOTS OF FUN FOR ALL THE FAMILY

**St Luke's Church, Hickling**

and many more churches across Nottinghamshire will be open for the Diocesan Open Churches Weekend on the 20th & 21st of July 2013.

Check our website for more details [www.notsoopenchurches.org.uk](http://www.notsoopenchurches.org.uk)



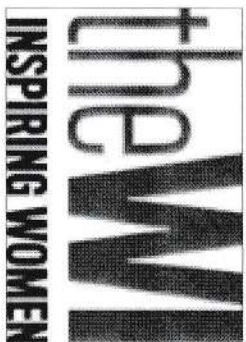
# DAVE FAULKES PLANT HIRE

**DIGGER &  
DRIVER FOR HIRE**

*Types of work undertaken include:*

**PADDOCKS TOPPED,  
ROLLED & HARROWED  
HEDGES CUT  
DITCHES CLEANED  
DRAINAGE WORK  
LANDSCAPING  
FENCING ERECTED  
BUILDING WORK**

**Please call 07831 467306 or  
01664 823511 for a competitive  
quote**



WI - Inspiring Women.

It was a freezing evening for our January meeting: nonetheless members and their guests braved the elements to hear Tim McEwen give a talk and demonstration on bread making. Those who know Tim will know how passionate he is about bread making, and after sampling a slice of one of his loaves, it is clear he makes jolly good bread! He told the group exactly how he makes his bread while they scribbled down his recipe, which has lots of "norms" discarded. No sugar with the yeast, no leaving the yeast to work in warm water etc. Members left well stuffed after eating excellent bread, butter and cheese (and of course drinking a glass of wine) and went home armed with fresh yeast to have a go themselves. Some members were up early the next morning to follow Tim's recipe. Exactly 20g of salt, no more, no less; and 666g (visualise Tim's demonic grin!) of water, no more, no less. The results may not have been quite as good as Tim's - but practice will help. A thoroughly enjoyable evening, good food and a challenge as well. Just what our members like - thank you Tim.

In February, we again tapped local talent. Peter Horter came to talk about his visit to Ethiopia in charge of a group of 16 - 18 year old boys. Not only did we have a geographical, historical and cultural trip around the vast area that is Ethiopia, but we also had entertaining insight into the highs and lows of spending three weeks with a group of lads away from home. Lost clothes and passports, the difficulty of parting them from their electronic entertainment and the joys of the boys cooking skills. Perhaps Peter can come back again and talk about his trip to Thailand.

The Annual Federation meeting is on Wednesday, 17<sup>th</sup> April at the Royal Centre, Nottingham, and the guest speaker is the author Jack Sheffield, who is very entertaining. Anyone wanting to go to the meet-



# Vale Electricians

## Electrical Contractors

Specialists in all types of Industrial,  
Commercial and Domestic Installation

1a Station Lane, Old Dalby,

Leicestershire LE14 3LR

Telephone (01664) 822 217

National Inspection Council for  
Electrical Installation Contracting  
**njc EIC**  
APPROVED CONTRACTOR



## Creative Curtains

MADE TO MEASURE SOFT FURNISHINGS

'TWIN TREES,' PARADISE LANE,

OLD DALBY.

01664 822475

## A.R. PEET LIMITED

Specialist Retailer of Wood, Gas, Electric and Multifuel  
Stoves

Tel: 01664 822397

[www.arpeetstoves.co.uk](http://www.arpeetstoves.co.uk) [info@arpeetstoves.co.uk](mailto:info@arpeetstoves.co.uk)

HOME FARM, MAIN STREET, HICKLING

ing should contact Gwen Cane about tickets.

At our meeting on Thursday, April 18th the guest will be Margaret Harrison with a "Monthly Menu of Mirth, Part 2". Having had Part 1 a while ago, we look forward to being thoroughly entertained. On April 21<sup>st</sup> members will be preparing and serving teas at Mr Chambers' open garden event. Let's hope the weather is kind this year.

May 16<sup>th</sup> is the start of our new programme for 2013 - 2014, and we will be discussing the Resolution followed by a talk in the series "So you think you know Nottingham" by Carol Beadle.

Could I just remind you of our two trips: Blenheim Palace (May 11th) and Harlow Carr (July 11th). Please contact Pauline Chell for information and tickets.

Mary Smith  
Hon. President.

**Oh yes it is - oh no it's not - oh yes it is again!**

Important news about the Hickling Panto!!!!

The March dates are now postponed until Late November.

We apologise to anyone who is inconvenienced by this - the group decided that having a panto in the run up to christmas was preferable to a March or May date - we hope that you agree!

So we shall be presenting our panto 'Jack and the Beanstalk' in late November - we shall let you know more detail in the next newsletter. Many many thanks for all your support in the past and - hopefully - in November!

Tel. 01664-822471



## **Keith Wadkin & Son**

**Tree Specialist**

Hickling

Melton Mowbray, Leics.

LE14 3AQ

Established 1959

Tree Felling  
Lopping,  
Pruning,  
Ground  
Clearance,  
Tree Surgery,  
Fencing,  
Planting,  
Logs,  
Wood  
Chipping,  
Hedges  
Maintained.  
Fully Insured

## **HICKLING WI TRIPS – 2013**

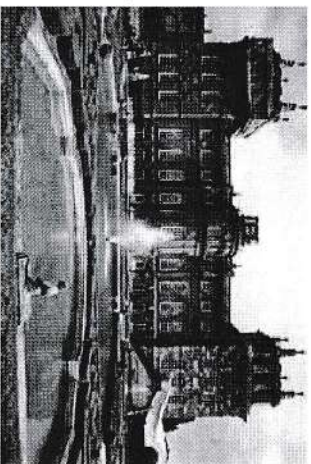
The trips are open to WI members and friends so that means anyone!!! Tickets sold on a first come basis as places are limited, so book early!!!

Both coaches leave Hickling at 7.45 am, but other pickup places can be arranged if required.

### **11 MAY - BLENHEIM**

### **PALACE AND OXFORD**

£25 – coach plus entry to house and gardens. This is exceptionally cheap as Blenheim gave a huge discount for a group booking.  
3 hours in Oxford. Return approx. 8.30pm.



### **11 JULY – HARLOW CARR RHS GARDEN AND HARROGATE.**

£20 – coach plus entry to garden. (£14 for RHS members) 3 hours in Harrogate. Leave Harrogate at 5.45 pm for Hickling. Harlow Carr is a garden dominated by water, stone and woodland and blends with the Yorkshire landscape. We have arranged a general interest group tour which is optional and gives a fascinating overview of the history of the garden and main highlights. Approx £3 extra. RHS shop, plant centre, Betty's Tearoom.  
Harrogate is a historic spa town with splendid architecture. 4 level Victorian shopping centre, Mercer Art Gallery, Royal Pump Room museum and valley gardens. Montpelier Hill cafes and antique shops, plus THE Betty's.

Tickets on sale now with Pauline Chell 01664 822835.

## **R & S Birley Motor Engineers**

East End, Long Clawson. Telephone 01664 822450



**Approved MOT testing station.**



**Servicing and repairs on car & commercial vehicles.**



**Tyres, balancing, punctures & wheel alignment.**

**Accident and breakdown recovery service.**

**Forecourt sales for Petrol, Diesel & Oils etc.**



**Established in Long Clawson for over 40 years.**

E-mail: [birleys@long-clawson.com](mailto:birleys@long-clawson.com) Web page: <http://birleys.long-clawson.com/>



# Curtains by Sarah

8 Laura Davies Close  
Melton Mowbray  
Leicestershire LE13 1EG

Home visits at  
Your  
convenience,  
providing  
consultation,  
advice and  
design  
assistance

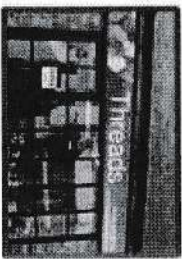
**Curtains** – with a choice of heading types  
**Roman blinds** – fitted to quality tracks  
Co-ordinated soft furnishings

Contact Sarah Parkin on  
Tel: **07762 705187**  
Email: [contact@curtains-by-sarah.co.uk](mailto:contact@curtains-by-sarah.co.uk)



[www.curtains-by-sarah.co.uk](http://www.curtains-by-sarah.co.uk)

## Threads



2c Main Street  
Keyworth  
Nottingham  
NG12 5AD  
0115 937 6010  
[www.threadsotkeyworth.co.uk](http://www.threadsotkeyworth.co.uk)  
Opening hours: Mon – Sat 9-5

*Hello,*

*We welcome you to visit our newly refurbished shop in the village of Keyworth. We stock a wide range of haberdashery products and a large selection of wool, patterns and other sewing essentials.*

*We also stock cross stitch kits and the full range of DMC embroidery kits.*

*Visit us on Facebook at: [www.facebook.com/threadsotkeyworth](http://www.facebook.com/threadsotkeyworth) for the latest news and additions to our stock.*

*We look forward to seeing you.....*

*Diane & Kathryn*



## Thank you

From Keith Wadkin to all of those who have helped him to raise another £1,000 for charity ...

Donations continue to roll in and sales of the two Hickling books rise and following great demand a reprint was run for the greetings cards which feature Hickling Windmill (painted by Mike Weston from an original by Mr JL Laws 1908), resulting in an amazing £1,000 raised for charity by Keith.

The funds have been distributed between The Alzheimer's Society, Dove Cottage, Long Clawson Surgery and Nottingham Breast Cancer Unit. Keith would like to express his sincere gratitude and thanks to all who continue to support his fundraising.

Copies of the books are still available to purchase "Reflections of Yesterday" (photographs and history of the village) and "Maggie's Memories" - compilation of life in Hickling by Keith's mother, Margaret Wadkin, who was born in Hickling in 1908 and lived in the village for around 73 years. Anyone interested, please contact Keith Wadkin.

*[These two books make lovely companions, with photographs of many of the people and places mentioned in "Maggie's Memories" being reproduced in "Reflections of Yesteryear" - Ed.]*

## And WI Charity News ...

For their Charity in 2011, Hickling WI members supported Maggies, a cancer charity. Last month we received a lovely letter of acknowledgment, some of which we would like to pass on. I quote "I wanted to send you a message of warmth and thanks around Valentines Day, on behalf of the many people you've helped with your support to Maggies. You have enabled us to provide our unique support to reach more people in more ways, helping them to find their own way through cancer. Last year we had over 112,000 visits to our Centres across the UK and in 2013 we aim to increase the number of visits from people who need us to over 135,000. I hope you, and your friends and family will continue to help us in whatever way you can. If someone you meet needs our support, please tell them about us, and please continue to help us to make such a difference."

# HERRICK

landscaping

Professional Landscape Design,  
Construction & Maintenance

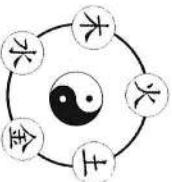
For a friendly, local service and a free quotation contact

Thomas Herrick: 01949 81733 - 07738 118959

enquiries@HerrickLandscaping.co.uk

www.HerrickLandscaping.co.uk

City &  
Guilds  
NPTC



## Traditional Acupuncture

**Fiona Lee**

BA (Hons): Lic. Ac: MBACC; BSc (Hons): BFRP

Tel : 07816 842249

www.keyacu.co.uk

BACC Member  
www.acupuncture.org.uk



Traditional Acupuncture works to maintain the body's equilibrium by focusing on all aspects of wellbeing: physical, mental and emotional.

**FREE 20 minute preliminary consultation available**  
to help you decide whether acupuncture is appropriate for you.

**Bach Flower Remedy**

consultations for emotional wellbeing also available.

**Appointments available at Key VI Fitness, Bunny Lane, Keyworth**

**SCRAP  
METAL SKIP**

**SATURDAY 27<sup>th</sup> APRIL  
9AM - 11AM  
OUTSIDE HICKLING VILLAGE  
HALL**

**DISPOSE OF YOUR UNWANTED METAL  
ITEMS FREE AND HELP US TO RAISE  
MONEY FOR THE VILLAGE HALL.**

**WE CAN TAKE MOST METALS BUT  
NOT  
COMPUTERS (EXCEPT CABLES)  
FRIDGE/FREEZERS  
GAS BOTTLES  
BEER BARRELS**



# AMBASSADOR OIL HEATING SERVICES LTD

Boiler installations

Servicing

Breakdown repair

Tank installations

Agas/Rayburn supply, installation, servicing and repair

General plumbing

Finance available on all boiler and tank installations

## 01858 881118

info@ambassadoroilheatingservices.co.uk  
www.ambassadoroilheatingservices.co.uk



## HICKLING PRE-SCHOOL

### WE NEED YOUR HELP!!!!

**PLEASE DONATE YOUR CLOTHES, BRIC-A-BRAC,  
TOYS, AND TOMBOLA PRIZES FOR OUR JUMBLE  
SALE.**

**SATURDAY 20<sup>TH</sup> APRIL 2PM.**

Please deliver your jumble to Hickling Village Hall on the morning of Saturday  
20<sup>th</sup> April.

We would like to thank the Hickling ladies for their support with this Jumble  
sale.

We are also asking people to support our fund raising efforts by shopping online via [www.easyfundraising.org.uk](http://www.easyfundraising.org.uk) Any purchases made online will earn a small donation from the retailer to our charity. This has proved to be a successful fund raising method but we need more people to join. If you go to the website, it is very easy to register and then every time you shop online, just go to this website and search for your retailer. Simply click on the retailer's logo and the website will register your purchase, earning a donation for the pre-school with every purchase.

#### And now news from the pre-school.....

The children have been enjoying learning about 'Lives and Environments in Other Countries' in the run up to Red Nose Day. They have also been celebrating Mother's Day and looking forward to Easter Activities.

This term the Wednesday afternoon session has been open to all children. The 'Steps to School' session (or Rising 5's as it was previously known), for the older children preparing to move to school has been taking place in a sectioned-off part of the hall and every measure has been taken to ensure these sessions have remained as productive and enjoyable for the children as they were when they were exclusive to the older children. So far we have received a lot of positive feedback.

We are also able to offer a last minute drop in session to children who are registered with us. Please contact us beforehand to check availability.

#### Future events.....

On 15<sup>th</sup> June, we are holding a joint sponsored cycling event with Kinoulton School PTF. A team of dedicated parents, teachers and friends are cycling from Workington in Cumbria to Tynemouth in Tyne and Wear, a distance of 109miles in a day. For those who do not fancy 109miles, there is a 50 mile & a 25 mile family bike ride around Notts. on 23<sup>rd</sup> June 2013. We hope to work with



# FAULTS WASTE SERVICES

- 3.5yd3 to 35yd3 skips with drop doors
- Prompt & Reliable Service with no Hidden Extra Costs
- Household and Trade enquiries welcome

## 01664 822797

Mini Digger & Skip Loading Dumper Hire

# WILLIAM HERCOCK

FOR ALL YOUR BUILDING  
AND DIY SUPPLIES

- ❖ SLABS
- ❖ WALLING
- ❖ BRICKS
- ❖ ROOFING
- ❖ AGGREGATES
- ❖ CEMENT
- ❖ BLOCKS
- ❖ FENCING

ANY AMOUNTS CATERED FOR



FULL RANGE  
COAL &  
SMOKELESS FUEL

for delivery  
or collection

MON - FRI: 7.30am - 5.00pm / SAT: 8.00am - 12.30pm

The Depot Airfield  
Dalby Road  
Melton Mowbray

Tel: 01664 500947  
Fax: 01664 410650

everyone in the villages that are in the catchment area for the Hickling Pre-school and Kinoulton School to raise significant funds for new and on-going projects. For more information please email: [challengeyourself2013@yahoo.co.uk](mailto:challengeyourself2013@yahoo.co.uk)

#### Pre-school Times

Monday to Friday 9.30am to 12noon

Mondays & Thursdays – Lunch Club 12noon - 1pm

Wednesdays – 12noon to 3.15pm with the option of collecting at 1pm.

We provide a unique, safe and stimulating environment for children aged 2 to school age to learn through play. Our well-regarded and experienced staff will be happy to talk to you about the pre-school. There are links with the Village Hideout Breakfast Club who provide transport for age 3+ from Kinoulton Village Hall Mon –Fri and to the after school club on Wednesdays. Tel: 07950 558608 or email: [hicklingpreschool@gmail.com](mailto:hicklingpreschool@gmail.com) and website: [www.hicklingpreschool.org.uk](http://www.hicklingpreschool.org.uk)

## JUMBLE SALE

@ Hickling Village Hall

Saturday 20th April 2013

2pm-3pm

Toys, Clothing, Bric-a-brac,  
Household goods, Books, etc.

Refreshments available

Tombola & Cake Stall

Contact Laura 07764 147 255

Or Anne 07854 096 924 for details

In aid of Hickling Pre-School

## Stars of the season !

The most surprising development, noticeable towards the end of our season, has been the growing number of young children attending our weekly sessions. At an age when writing their own name in our register, is in itself a challenge, they nevertheless learn to also work out the time and experiment with the many variations of what passes for the tricky little £ sign!

With their seemingly limitless energy, they strive to copy their older siblings, only to find they are not quite tall enough or struggle with the complex hand - eye coordination which table tennis demands. Tennis balls and 'poppers' hold their attention for a time as, with increasing numbers, we have been obliged to re-jig the layout of the hall to provide a degree of separation.

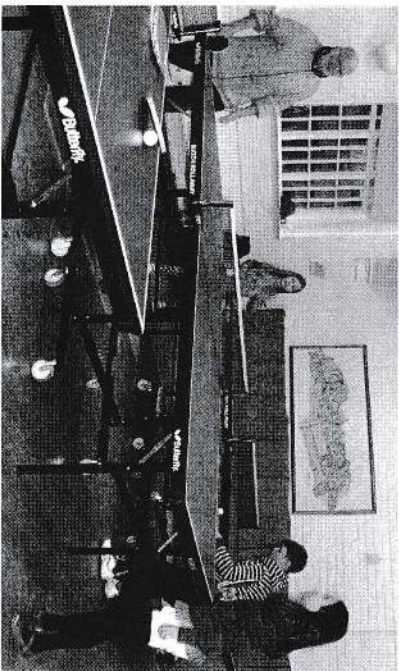
However, inevitably the lure of the big table proves too strong and despite not being able to see over the table top, they try to emulate, with very little success, the play of the older children. As this edition of The Hickling Standard goes to print, we are anticipating the delivery of two brand new tables, specially designed for the very young!

They are smaller in length, lower and thereby at waist height, as well as being capable of having an inclined playing area. Why the slope? It slows down the ball and allows it to sit up more, therefore making it easier for youngsters to establish a rhythm.

Of course we all know the real attraction is the orange juice and biscuits towards the end of the session! Despite having had their evening meal prior to arriving, they are always ravenous after a little exertion and, as in the story of the Pied Piper, they follow the goodies everywhere.

These early sessions would not be complete without one other essential ingredient – Grandad Cox.

With a cheery smile, abundant energy and an insatiable desire for cups of tea, Dennis Cox automatically steps in to encourage, not only his own Grandchildren, but any child who appears without a partner and in need of support.



'Grandad' you are a star and we love your fantastic array of designer knitwear, especially the bright red number!

With the arrival of the lighter nights and the promise of some sunshine, our season draws to a close. Time for rest, recuperation and in our case, reflexion on the challenges the season has presented.

We'll be back on Monday 9th September refreshed, full of ideas and ready to invite old and new members back again - of course with a new supply of biscuits!

We already know Nottinghamshire Women's Institute are planning to use our facilities in November to provide an opportunity for W.I. members throughout the county, to play table tennis. Seems the news about our readily adaptable set up has spread.

In the meantime, if on holiday you spot a table tennis table, give it a go and return to join us next season.

# HICKLING'S DIAMOND JUBILEE BELL IS BORN

On Thursday 14<sup>th</sup> March at Taylors Bell Foundry in Loughborough Hickling's new 6<sup>th</sup> bell commemorating last year's Diamond Jubilee Year was cast, witnessed by a large group of interested Hickling people.

We were first treated to a very informative tour of the works by the Oracle of the bell world, George Dawson. Taylor's has become owned and run by people who have a lifelong interest in all aspects of bells and ringing, and the factory now makes nearly all accessories needed for hanging and maintenance of bells as well as casting the bells. We were able to see how wheels are made and steamed into shape, how help ropes are woven and the woollen sallies (coloured bits) put in place and shaved as well as how the moulds are made for casting and how the bells are eventually tuned. The foundry is a fabulous example of industrial chic that designers spend a fortune trying to achieve with its earth floors, high ceilings with exposed beams, piping, distressed paintwork and sooted walls – all lines with interesting artefacts that normally take years of scouring second hand shops and car boot sales to find, but have clearly just never been cleared out once obsolete.



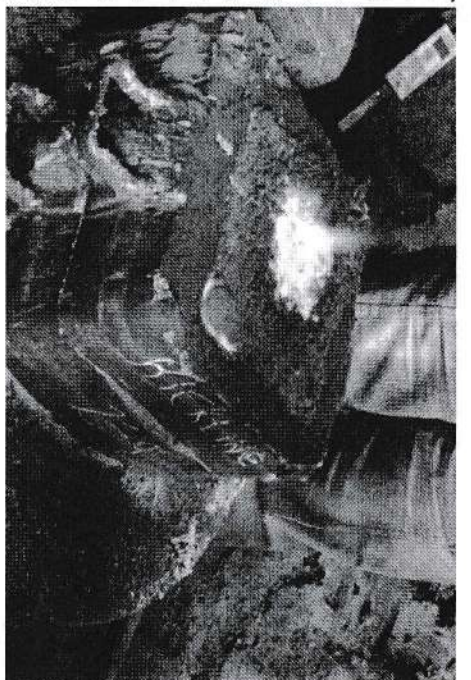
Services Available;

- Sales Receipts and Invoice Recording
- Bank Account Reconciliation
- Profit and Loss Accounts
- Credit and Debtors Listings
- VAT Returns
- Invoice Productions
- Payroll
- Financial Reports
- Electronic Set up and Back up
- Filing and Account Organisation

Tel: 01664 500991

Email: [info@pandabookkeeping.co.uk](mailto:info@pandabookkeeping.co.uk)

Website: [pandabookkeeping.co.uk](http://pandabookkeeping.co.uk)



The British system of bellinging and manufacture is unusual and found only in Britain and ex-colonial countries. Taylor's is one of only two bell foundry's in Britain, the other being White-chapel. As such it receives interesting commissions from round the world. This time when we were shown round they had the bells from Christchurch there to restore following the devastating earthquake that destroyed the Cathedral. It was surprising to see that those bells had sustained fairly minor chipping – how on earth did we manage to crack ours if it takes an earthquake to do that? Of course the Christchurch bells are much younger than our old 6<sup>th</sup>.

The casting itself was watched pretty much in silence apart from a few ooh's. One the bell metal had reached critical temperature it was poured – molten and glowing and with much spitting into a crucible which was then taken by pulley to our mould, already half-buried in the earth. There are two moulds, an inner and outer, and the bell metal glowing white and orange is poured into the gap between the two. It is then stirred to get rid of trapped oxygen. At this point we are allowed to come down off the viewing gallery and have a close up view. Plenty of heat comes off the small part of the bell that is above the surface, and as it is heated to 1200 C it probably shouldn't be surprising.

Then the bell ringers amongst us were able to ring the Foundry bells, a rare treat and a bit of a challenge. Hickling ringers have cut their teeth on quite heavy bells and the foundry ones are a very light ring of 12.

It was great to have so many people who were interested in this event and to have several children there who I'm sure felt it was worth the afternoon of school they missed. Bell casting is essentially carried out the same way as it was 300years ago when the foundry was first opened in Loughborough so the process is a piece of living history. It is a world away from the sterile conditions found in most of today's computer controlled factories.

We look forward to our bell 'hatching' next week, when it is dug up and the moulds broken off. Then, who knows, it may be tuned and delivered by Easter.



## CHURCH SERVICES

		<b>Hickling</b>		<b>Kinoulton</b>		<b>Upper Broughton</b>	
Date	Day	Time	Service	Time	Service	Time	Service
28-Mar	Maundy Thursday		no service	7:30 PM	Holy Communion		no service
29-Mar	Good Friday	1:30 PM	Walk Good Friday	2:30 PM	Walk Good Friday	12:00 PM	Walk Good Friday
		7:30 PM	Evening Service				
31-Mar	EASTER DAY		no service		no service	10:30 AM	Holy Communion
7-Apr	2nd Sunday of Easter	6:30 PM	Holy Communion	11:00 AM	Family Service	11:00 AM	Morning Prayer
14-Apr	3rd Sunday of Easter	6:30 PM	Confirmation	9:15 AM	Holy Communion	10:45 AM	Sunday Crew
21-Apr	4th Sunday of Easter	6:30 PM	Evensong	9:15 AM	Holy Communion	11:00 AM	Morning Prayer
28-Apr	5th Sunday of Easter	11:00 AM	Family Service	11:00 AM	Morning Prayer	9:30 AM	Holy Communion
5-May	6th Sunday of Easter (Rogation Sunday)	6:30 PM	Holy Communion	11:00 AM	Family Service	11:00 AM	Morning Prayer
9-May	Ascension Day			7:30 PM	Holy Communion		no service
12-May	7th Sunday of Easter	11:00 AM	Morning Prayer	9:15 AM	Holy Communion	9:30 AM	Mattins (BCP)
						10:45 AM	Sunday Crew
19-May	Pentecost	6:30 PM	Evensong	9:15 AM	Holy Communion	11:00 AM	Morning Prayer
26-May	Trinity Sunday	11:00 AM	Family Service	11:00 AM	Morning Prayer	9:30 AM	Holy Communion
2-Jun	1st Sunday after Trinity	6:30 PM	Holy Communion	11:00 AM	Family Service	11:00 AM	Morning Prayer

## CHURCH ROTA FOR MARCH - MAY 2013

DATE	FLOWERS	CLEANING	REFRESHMENTS	SIDESMAN
Mar. 29 <sup>th</sup>	GOOD	FRIDAY	WALK	Mrs. G Simpson
Mar. 31 <sup>st</sup>	Mrs. Benson & Helpers	EASTER NO SERVICE AT	SUNDAY HICKLING	-
Apr. 7 <sup>th</sup>	-	Mrs. Wood/Chahal	-	Mrs Thomas
Apr. 14 <sup>th</sup>	Mrs Harrison	Mrs. M. Simpson/Haines	Mrs. Wood/Parkes	Mrs Faulks
Apr. 21 <sup>st</sup>	-	Mrs. Smith/Brooker	-	Mr. Bloor
Apr. 28 <sup>th</sup>	Mrs. G. Simpson	Mrs. G. Simpson/Faulks	Mrs. Vear	Mrs. Wood
May 5 <sup>th</sup>	-	Mrs. Wood/Chahal	-	Mrs. Thomas
May 12 <sup>th</sup>	Mrs Vear	Mrs. M. Simpson/Haines	Mrs. Smith/Bloor	Mrs G. Simpson
May 19 <sup>th</sup>	-	Mrs Smith/Brooker	-	Mrs. Faulks
May 26 <sup>th</sup>	Mrs Parkes	Mrs. G. Simpson/Faulks	Mrs. M. Simpson	Mr. Bloor

January and February are, for me, the most depressing months of the year. 2013 has been no exception, with dismal weather, dismal national headlines, and international news which only seems to reinforce the downward spiral. I often begin each year by trying to find something to lift the gloom. This year it seems to have been birds.

It started with the arrival of rare visitors to the garden bird table. First there was a pair of magnificent jays with their bright turquoise wing flashes. They managed, in spite of the netting put there to stop the bigger birds from eating absolutely everything, to stand side by side on the table and delicately gather up nuts, one by one. Some days later, a group of seven long-tailed tits with their pale pink breasts and flicking long tails arrived to feed. They flitted around the table like fluffy balls on sticks. And then, on a particularly snowy day, the reed buntings put in an appearance - all something to brighten the day!

Next there were the birds on television - from the prehistoric-looking shoebill captured on film in David Attenborough's 'Africa' to the delightful antics of the penguins hoodwinked by the cameras in the 'Spy in the Huddle' series. There was probably no shortage of smiles amongst viewers when the mighty Emperor slipped over on the ice or when the Rockhopper bounced back down the cliff face it had just seemed to conquer. There was also the look of total bemusement when the penguin which had just decapitated the 'spycam' was left puzzling over a headless body with only two metal prongs protruding from the neck. (And I'm not even going to mention the amorous advances of one deluded individual!) But it was fascinating to see the rugged determination of these creatures to find their breeding grounds and raise their young, often with what appeared to be a moving tenderness.

On the second Sunday in Lent, there was yet another bird which captured my attention. This came in one of the day's Bible readings in which Jesus likens himself to a bird. You might expect that bird to be a falcon or an eagle. Not so. There can't be any other man of such stature in history who has likened himself to a chicken - or to be more precise, a mother hen. Jesus does exactly that by portraying himself as a mother hen spreading her wings and gently protecting her chicks underneath from any imminent danger. It is a powerful, if unexpected, image.

So the birds have 'seen me through' the dull months. Easter, which brings, for those who believe it, the glorious joy of the Easter message, is nearly upon us. Nature has also played its part. The ultimate sign for me that Spring has arrived is the hawthorn hedge. As I write, it has not yet burst into its brightest shade of green but I am sure that it will, and I am cheered.

Sheila Hill

### St. Luke's Parochial Church Council

The Jumble Sale in January made a wonderful profit of £633.32 for church funds, after the cost of the Village Hall £25 and the Nottingham Post advert £22.20. Many thanks to everyone who donated goods and to those who helped on the day.

Many thanks also to everyone who took part in the "Round Britain" quiz. Twenty completed entries were returned. The 1<sup>st</sup> prize with 100 correct answers went to Mrs Lynn Miles of West Bridgford. Three people had 99 correct answers - Mrs M Smith Hickling, Mrs M Johnson of Grandby and Mr. P J Carey of Keyworth. In the draw for 2<sup>nd</sup> prize Mr. Carey was successful.

A big thank you to all who clean the church, do altar flowers and refreshments every week. Your unselfish input is very much appreciated by all who visit the church

A historic moment occurred on March 14<sup>th</sup> when the new church bell was cast at the Loughborough Foundry. John and a number of other villagers from Hickling, who had made donations to have names cast into the bell, saw the cast being poured. It will, of course be a number of days before the bell has cooled sufficiently for the mould to be opened and the results known. St. Luke's bell ringers also rang a peel of bells whilst at the foundry. When, after nearly 400 years service, the present cracked bell is removed, it will be permanently retired to the clock tower. Hopefully, visitors will be able to climb up and see it when church is open for Open Churches and the Scarecrow weekends.

Margaret Wood 01664 822257  
John Bloor 01664 822682  
Churchwardens.

## IAN HODGETT *Joiner and Cabinet Maker*

Based in Cropwell Bishop with 30 years experience

- Supply and installation of handcrafted cabinets and bespoke fitted furniture
  - Kitchen refurbishment including timber worktop maintenance
  - Staircase conversion
  - Sash window refurbishment
  - Garden furniture maintenance
  - Laying of wooden floors
- Supporting Services**

- Design Service
- Project management
- Sourcing of Kitchen
- Installation only
- Tiling
- Decorating

Office: 0115 8371182 Mobile: 07725 973133

Email: [ian-hodgett@hotmail.co.uk](mailto:ian-hodgett@hotmail.co.uk)

## Trent Upholsteries Ltd. *Master Upholsterers*

Reupholstery Specialists and  
Manufacturers of Quality Upholstery.

Member of the Association of Master Upholsterers.  
Select from our large range of fabrics and trimmings.  
Traditional and modern upholstery methods.

Hand built upholstery to your measurements using beech  
frames and coil springing.

**Trent House, Croydon Road, St. Peter's Street,  
Nottingham. NG7 3DS.**

**Telephone: 0115 978 6699**

**Website: [trentupholsteries.co.uk](http://trentupholsteries.co.uk)**

**E-mail: [trentuph@btconnect.com](mailto:trentuph@btconnect.com)**

Visit our showroom or phone and ask for advice.

Private car parking.

## SPRING/SUMMER NEWS



The bulbs are up, the trees putting out new shoots and the terrible winter is behind us. So what has been happening?

**Heart Start** – Kinoulton Parish Council have successfully run Heartstart classes in Kinoulton and Owthorpe and more are on the way.

**Would you know what to do in a life-threatening emergency? Learning Emergency Life Support (ELS) skills can help you keep someone alive until professional help arrives.**

Click the link to [www.bhf.org.uk/handsonlyCPR](http://www.bhf.org.uk/handsonlyCPR)  
to see advice and view the Vinnie Jones video "Staying Alive"

As we are anything from 12 – 25 minutes away from an ambulance it is essential we make every effort to protect our communities

**Defibrillators** - Hickling Parish Council are utilizing the old Red telephone box in the centre of the village for a defibrillator and looking at running Heartstart courses. A second defibrillator is hoped to be sited by the Canal on the Plough Inn wall and Bob is hoping to organize one of his sensational fund raising music nights and is collecting donations over the bar. I have already started the fund off with £193 from my Community Support allowance. There are other places we could site defibrillators so if you have ideas let your Parish Councils know - it just needs a bit of community effort and will.

**Broadband** the Government is still committed to supplying all homes with Broadband by 2015. However in the meantime those of us in rural areas need upgraded download speeds. There are alternatives to using a BT line. Several residents in rural locations within the Ward have signed up to Wireless via 'ineedbroadband', and are receiving speeds around 20 meg. It may

## The Vale Salon

Isobel Moore & Daughters  
Beauty Therapy & Foot Health Practitioner

HEALTH CARE  
**GUINOT**  
THE VALE SALON

Approved Salon

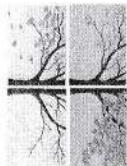
Long Clawson

Guinot Facials, manicures, pedicures, CID Shells™  
nails, waxing, threading, massage, hot stone massage,  
eyelash/eyebrow treatments, foot health treatment  
Girdy pumpers available

01664 823947 or 07977 422903

[thevalesalon@hotmail.co.uk](mailto:thevalesalon@hotmail.co.uk)

Call or email to find out our great offers of  
the month



**ALL SEASONS  
GARDENING  
SERVICES**

MOWING, WEEDING

PLANTING, CLEARING, HEDGE CUTTING  
PRESSURE WASHING, SCARIFYING  
PAINTING, TURFING, WASTE REMOVAL

WEEKLY OR ONE OFF JOBS

REASONABLE RATES

FULLY INSURED

RELIABLE

CLEAN AND TIDY SERVICE

Rob Collishaw

Matt Pyke

07548 819581

07864 973381

[allseasonsgardening@live.com](mailto:allseasonsgardening@live.com)

## THE VALE PHYSIOTHERAPY

### And Sports Injury Clinic

Established 1986

Practice Principal H. Elizabeth Smith

CARNEAL COTTAGE, MAIN STREET, HICKLING, MELTON MOWBRAY LE14 3AH

Attractive new facilities at long-established practice in the village

Now consists of a team of six chartered and state-registered  
physiotherapists with a wide range of  
individual specialisms to provide treatment for

**SPORTS INJURIES; NECK and BACK PAIN;  
HAND and FOOT PAIN; WOMEN'S HEALTH;  
GENERAL REHABILITATION;  
ACUPUNCTURE FOR PAIN RELIEF**



Telephone/fax 01664 822234 for an early appointment

be worth investigating particularly if you are reliant upon Broadband for business or homework.

#### Police – Village Breakfasts

It was great to see officers from our Community Policing team at the village breakfast in Hickling the other week. What a great way to get to know the community and its concerns. We hope they will be invited and attend other village events.

#### Neighbourhood Watch Now all the villages have active Neighbourhood

Watch schemes make sure you stay in touch and keep safe.

[hickling\\_nhww@btinternet.com](mailto:hickling_nhww@btinternet.com)

#### Extracts from Rushcliffe Reports:

##### “The BIG Nottinghamshire Energy Switch – time to switch!

Nottinghamshire County Council and Rushcliffe Borough Council are backing a new scheme to help people beat rising gas and electricity prices and save up to £200 a year on their bills.

Nottinghamshire Switch ‘n’ Save is about helping people to get the best deal on energy prices by switching supplier. The scheme involves consumer organisation Which? to give people peace of mind and reassurance that they will get independent consumer advice.”

For more information, call 0300 500 8080 or visit:

[www.nottinghamshire.gov.uk/switchsave](http://www.nottinghamshire.gov.uk/switchsave)

##### “VISITING HOSPITAL – a link from Keyworth.

##### ‘New bus service to QMC from Keyworth and East Leake.

RCVS has been asked by the NHS Rushcliffe Clinical Commissioning Group to let community groups be aware that the NCC rural service 63 is now being operated by Paul Winson Coaches of Loughborough. A new timetable is being operated. The service applies to Keyworth, East Leake and Ruddington. This is the link for more information:

<http://www.nottinghamshire.gov.uk/large-static/nottsbus/timetables/PW63.htm>

Cllr. Tina Combellaack JP

[Cllr.tcombellaack@rushcliffe.gov.uk](mailto:Cllr.tcombellaack@rushcliffe.gov.uk)

**THE  
BELVOIR  
FLOWER CO.**

**Flowers for Every Occasion**

**Weddings, Parties, Events, Bouquets & Funerals, whatever the occasion we will provide flowers to suit your style and specification.**

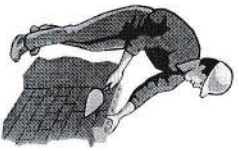
If you prefer to do it yourself and not sure how, why not join one of our workshops for a fun, relaxed and informative day.

Further details on [www.thebelvoirflowerco.co.uk](http://www.thebelvoirflowerco.co.uk) and follow us on

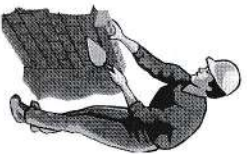


Deliveries 07881762910/email  
[enquiries@thebelvoirflowerco.co.uk](mailto:enquiries@thebelvoirflowerco.co.uk)

The Belvoir Flower Co. est. May 2011, Company Registration 078558583,  
West End House, Long Clawson, LE14 4PE



**D&C KNOTT**  
**General Builders and Decorators**  
**Plans Drawn and Submitted**



The Cottage  
14 Chapel Lane  
Old Dalby  
LE14 3LA

Tel 01664 822443

E-mail [d.knott947@btinternet.com](mailto:d.knott947@btinternet.com)

Established over 50 years

**HICKLING PARISH COUNCIL**

Precis of minutes of meeting of 5th February 2013

Present: Wendy Brazener, Bill Oldham, Martin Smith, Richard Salt, Jo McQuat, Tony Hand (Chair), Peter Greenwood, the Clerk and 4 members of the public

Open session for the public

Clerk to report state of surface of Green Lane (had already done so twice in last 6 weeks) and layby opposite cemetery to County Council.

Matter's Arising.

Drain cleansing policy: Brian Hartley at County Council had not replied to Clerk's e-mails nor been able to take her 'phone calls about blocking of surface water drains. Mr Hartley had not responded to her emails or been able to take her calls so The Clerk had attempted to make contact via Rushcliffe Borough Council but had been directed back to the County Council or Severn Trent. Cllr. Greenwood had found out that there had been a blockage to the sewerage pumping station at Upper Broughton which Severn Trent had tried to rectify by filling a tanker and depositing in the drainage system at the southern end of the Main St. It was believed that this action had caused the water to back up. Clerk to write to both Notts County Council and Severn Trent explaining the issue with regard to pumping tanker loads into combined sewer/surface water drain.

Correspondence.

RBC: Code of Conduct adoption and Members' Interest forms: Members agreed to adopt Code. Interest Forms to be returned to Borough Council.

NCC: Lengthsman Scheme: evaluation of pilot and proposals for 2013. The County Council had written asking for parish council to contact them if they wished to make an expression of interest for taking part in the extended pilot. Clerk to contact NCC for details of commitments of NCC to PC and what would not be done if scheme not undertaken.

Decision to join NALC, not SLCC, since both council and clerk can contact former organisation.

Cemetery.

Sectioning of unconsecrated area, only one tender received, PC obliged to re-tender, would contact Woodland Landscapes, Garry Watts, Carrier Landscapes and one other local business.

Hickling Village Hall raised £19,000, half way towards funding target.

Telephone Kiosk and Defibrillator(s): Payment needed for defibrillator for kiosk. Plough looking to raise money to install defibrillator there too. Also option of a third one at Bus Shelter on Pastures. Could ask the Country Fair Committee for some funding or to do an envelope drop asking for donations. Training event for using defibrillator good time to seek donations. For now payment for kiosk defibrillator to go ahead.

## The Window Cleaner

Reliable and local  
window cleaning service



For a free quotation  
call:- 07891003463

Rebecca Parrott

## FOOT HEALTH

PRACTITIONER

MEMBER OF SOCIETY OF FOOT HEALTH PRACTITIONERS

Removal of hard skin / callus

Toe nails cut and filed

Improving toe nails

Corns

Any foot problems welcome

A Mobile Service in your own home  
or Latham House Medical Practice

07739364738

£22.00



## YOUR LOCAL INDEPENDENT DRY CLEANING SERVICE

- Repairs and Alterations
- Day and Evening Wear
- Silks and Wedding Dresses
- Duvet, Eiderdowns and Sleeping Bags
- Laundered Shirts Service
- Free Removal, Collection and Re-Hanging of Curtains

13 Main Street, Keyworth, Nottingham NG12 5AA. Tel: (0115) 937 6599

Highways & Footpaths.

Environmental Weight Restriction - Lorry Watch established. Still awaiting a response from NCC about request for signs on the A606 and on Hickling Lane at Long Clawson, telling drivers that there was a restricted zone ahead.

Bus service: Litles taken over from Premiere and would run equivalent of 3.2 service to Keyworth.

Planning Matters.

### Applications:

Mr David Chambers, Erection of dwelling and garage, alteration to access (revised proposals), Elm House, Main St. Hickling. PC to inform RBC no objections, plans greatly improved.

Mr Peter Playle, Proposed Summerhouse, The Old Rectory, Main St. Hickling.

No Objection.

The following applications were forwarded to members between meetings and after consideration, no objections were submitted.

Mr Richard Collishaw, Erect agricultural storage building following demolition of existing nissen shed, Water Lane Farm, Main St. Hickling

Mr Nigel Robinson, Extension to agricultural building, Green Lane Farm, Green Lane, Hickling Pastures.

Mr & Mrs Brazener, Erection of a dwelling, Longridge, Clawson Lane Hickling

### Decisions:

Mr Nigel Robinson, as above, Permitted Development

Mr Nunn, Replacement dwelling including demolition of existing bungalow and enlargement of garden area, Shalena, Melton Rd. Hickling Pastures. Refused.

Mr Doolan, Demolish existing single storey extension and construct replacement single storey extension, Bowling Green Cottage, The Green, Granted.

### Tree works

Councillor Combella, The Old Barn, Main St, Hickling. Reduce height of Birch, reduce Willow and Horse Chestnut, Fell or substantially reduce decaying Ash.

Finance: Balance of the Current Account is £9,668.08 and the Business Reserve Account is £3,806.34.

Budget – draft proposals forwarded to members prior to the meeting.

Discussion about £1,000 for village hall, agreed it is a vital facility and money would only be granted if members felt scheme were suitable, therefore include this sum.

Cemetery maintenance, cost queried, Clerk said work included inspecting the trees, notified Clerk of headstone issues and levelled graves as required. Agreed in future to get three tenders each year, number of cuts of grasses and hedges to be specified. Retain current arrangements for 2013/14 and then go out to tender in the autumn.

### Agreed budget:

Audit £180, Clerk's salary £2,700, Postage and telephone £20, Printing and stationery £20, Bank charges £25, Seminars etc £35, British Legion donation

# Roma Travel

**APPOINTMENT SERVICE AVAILABLE  
AT OUR OFFICE OR YOUR HOME**

Adele Johnson, Charlotte Cottee, Joy Scarrott

**ARE HERE TO HELP WITH ALL YOUR TRAVEL REQUIREMENTS**

19-21 Main Street, Keyworth, NG12 5AA

Contact us on:

Tel: **LANDLINE 0115 937 2222**

Email: [res@romatravel.co.uk](mailto:res@romatravel.co.uk)

[www.romatravel.co.uk](http://www.romatravel.co.uk)



Never normal.

Always marvellous.

Purveyor of Lovely  
Stuff...

The Sands, Long Clawson LE14 4PA Tel: 07747751221 [hello@sophiesflowerco.co.uk](mailto:hello@sophiesflowerco.co.uk)

£20. Insurance £500. Subscriptions £200. Cemetery maintenance £2,000. Cemetery enclosure/path £1,000. Miscellaneous recreational £50. Community projects £200. Walker's Green £500. Hickling Standard £200. Parish Plan £200. Village Hall £1,000. Other grants £100. Total £8,950.  
The precept was set at £7038 – a 2% increase on last year.  
Payments Due: J Cartmell – Clerk's salary third quarter £657.54, Community Heartbeat Trust £1,750.00

Late items and Chairman's matters: Neighbourhood Watch team now established, agreed to pay basic start-up costs of around £25.0

Next meeting 26th March, Annual Parish Meeting and AGM 14th May.

#### PARISH COUNCIL NEWS

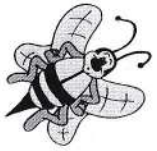
**Defibrillator** : The Parish Council has agreed to finance the siting of a defibrillator in the telephone kiosk. There will be a training session organised by the Community Heart Beat Trust (date to be arranged and published). This is good news for the village. There is still a need for other defibrillators, one at Hickling Pastures, and possibly one sited near the Plough. The Parish Council hopes that a village wide funding initiative will be held later in the year to raise the additional funds required. Each defibrillator costs in the region of £1700.

**Hickling Lorry Watch** : The village is now a member of the Notts. Lorry Watch scheme. This scheme includes our near neighbours, Cropwell Bishop and Barnstone cum Langer and many other villages county wide. We now have a team of observers and a coordinator who will monitor and report breaches of the HGV restrictions placed on Main Street. These restrictions are now in place to stop HGVs using Hickling as a rat run. I am pleased to say that there has been a falling off of such rat running. As a result of the observations to date, Trading Standards have sent warning letters to twenty plus hauliers. Anyone can report a vehicle that they believe is misusing a route. Either report to Tony Hand (tel 822612) or go to the Notts Lorry Watch web site and complete the short online form.

**Hickling Neighbourhood Watch**: Thanks to the efforts of Keith Brown we now have a registered NHW scheme. A team of area coordinators cover the whole of Hickling Village and Hickling Pastures. Information is being disseminated at regular intervals. Please remain vigilant and contact your local coordinator if you notice anything suspicious.

**Annual Parish Meeting**: This meeting will be held on May 14th at 7.00pm. This is an opportunity for all villagers to discuss the issues that are important to them, and the actions the Parish Council should be taking. It is also an opportunity to invite the local voluntary groups to talk about the work they do for us all. For example The Parish Plan needs to be reviewed and updated. This meeting will be publicised nearer the time and I look forward to seeing you.

Tony Hand, Parish Council Chair



*Hortor's*  
COUNTRY STORE &  
NURSERY

Bedding Plants    Perennials    Hanging Baskets

Planted Pots

Fresh Fruit & Vegetables    Local Honey

Local Creams & Yogurts

Fresh Local Meat    Fresh Local Bread

Fresh Milk

Stilton Cheese    Sunday Papers

CL Caravan Site

[www.hortors.co.uk](http://www.hortors.co.uk)

e-mail [ian@hortors.co.uk](mailto:ian@hortors.co.uk)

Tuesday – Saturday 9am-6pm

Sunday 9am-1pm

Closed - Mondays

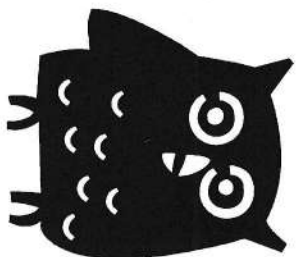
## Annual Wine and Wisdom

### Quiz Night

**Saturday 22nd June 2013**

**Kinoulton Village Hall**

Bar opens at 7.30 pm for 8.00 pm start



It's time to start watching QI repeats for obscure facts, swotting up on your local delicacies and paying special attention to the sports news. This is advance notice of the date for this year's annual Wine and Wisdom Quiz Night. So gather you team of six and swot up to join us for this fab fundraiser for Kinoulton Primary School.

There will be a meal included in the ticket price and tickets will be available from PTFA members nearer the date. As in previous years there will be a bar serving both a selection of wines and other alcoholic & soft drinks.

As usual the winning team will receive an exciting prize.

This is a great night out, so please come along on the 22<sup>nd</sup> June and support this event. Remember all proceeds go towards supporting the school's events e.g. the Christmas Panto, and providing additional equipment for the children to use.

## **Village Walk**

Sunday 19th May at 11.00am

Meet at The Basin

Unsuitable for pushchairs

Dogs must be on a lead

Approximately 5 miles

Returning to Marsh's Paddock  
for tea and buns!

No charge

Please ring Pauline on 822835  
so we know how many cakes to make!



Established 1905



# F BAILEY & SON

*High-Class Family Butchers*

UPPER BROUGHTON

Melton Mowbray

Pork Pies and

Sausages a

speciality

Tel: Melton Mowbray 822 216

Deliveries twice a week  
to surrounding villages

\*\*\*\*\*  
**DEEP FREEZE ORDERS DELIVERED**  
\*\*\*\*\*

## Co-operative Funeralcare

Local people giving extraordinary care

**Because we're local WE understand the needs of local people**

At Co-operative Funeralcare our emphasis is on understanding. It is through being part of the local community that we have come to understand your needs and design our service to exactly match those needs.

- 24 hour service
- Pre-payment plans available
- Caring & professional
- Memorial masonry

85 The Parade, Wolds Drive, **Keyworth**  
**0115 937 4437**

[www.co-operativefuneralcare.com](http://www.co-operativefuneralcare.com)



### South Wolds Celebrates Success

It is every student's nightmare – an illness jeopardising exam success. For Alex Grice, this could have been a reality, but after missing a term's work and failing an exam, he worked so hard he turned this round and came out with an A grade in his A level Business Studies at South Wolds Academy.

Alex was one of 28 students recognised for their outstanding achievements at a glittering awards evening for South Wolds students in January at the Carriage Hall in Plumtree. Alex's Business teacher, Mrs Spencer, said

"I cannot express how proud I was of Alex on results day. Alex battled with illness throughout his two year course, but worked very hard to become well again, and to independently catch up on the work he missed. He showed remarkable determination and self motivation."

Other awards winners included George Swain, who was awarded the Governor's Award for his contribution to school life. George visited the Auschwitz concentration camp with the Lessons from Auschwitz project, and then organised an Identity Day at school, where every student was given a roll number and referred to by that number for the whole day. This gave students a sense of the dehumanisation and humiliation that victims of the Holocaust experienced.

Chair of Governors, Kate Foale, said

"With his effervescent energy and impressive emotional intelligence he brought the messages learned from the Holocaust back into school and organised events that really raised student's awareness of what happened there 70 years ago. This is the impact that George had. He wasn't content just to sit back; he wanted to make a difference. Lots of students pass through our doors but not many leave a legacy as George did."

# Hickling Film Society

Film	Date
Sideways	April 2nd
Barbara	April 16th
Amour	April 30th
Argo	May 21st
The Beat That My Heart Skipped	May 28th
<b>Notice, once again, not necessarily every two weeks.</b>	

**Sideways:** Very funny and very sad, Sideways is smashing. The story is simple: wine-loving wannabe writer Miles is taking failed actor Jack on a week-long tour of California's wine region to celebrate his old friend's forthcoming marriage. But while Miles wants to relax, drink and play golf, Jack is determined to get laid one last time before settling down. Their adventures make for a charming, moving comedy about friendship, love and regret; and, most importantly of all of course, the enduring war between Pinot Noir and Cabernet Sauvignon. Excellent reviews: *BBC Movies 5\**, *Metacritic 94%*, *Guardian 5\**.



*In search of women, in search of wine and in search of themselves:*

Sideways.

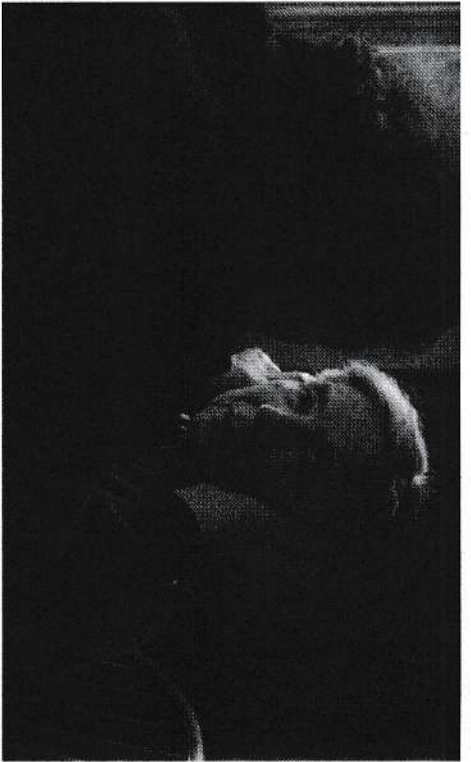
**Barbara:** Barbara is a doctor in the East Germany of 1980. As a punishment for political insubordination and an application to emigrate to the west, she has been removed from a prestigious position in Berlin and banished to a hospital in the provinces, where she is planning her escape with her lover, but is continually harassed by Stasi official Schutz. That's all you need to know, to know more would be dangerous, frag nicht warum. Excellent reviews.



*Captures the weird oppression of East Germany in 1980 ... Barbara.*

**Amour:** Michael Haneke's effortlessly graceful picture will come to be seen as one of the greatest films about the confrontation of death and ageing. *Time Out (5\*)*: Amour is a staggering, highly intelligent and astonishingly performed work. It's a masterpiece. Only *The Guardian*, true to its misanthropic core, has: "Amour: how can we embrace a film that is so clearly an advert for euthanasia? Enamoured as we are by Michael Haneke's Oscar-winning film, we're missing the dangerous social fallacies at its core." Oh God, will they never give up? I think Alan Rusbridger and his merry crew must be on something.

'Their performances are beyond reproach' (*Observer, 5\**). "Ce n'est pas une promenade dans un parc, mais un film difficile et sérieux, et ça le rend contemplative" (*Reuters*). "Amour" de "film d'horreur définitif", "bien plus effrayant et plus troublant" que des classiques comme "Psychose" ou "Shining" (*France News quoting New York Books Review*) – this may well be, however, a bit of French-American hyperbole.



Georges (*Jean-Louis Trintignant*) and Anne (*Emmanuelle Riva*) in *Michael Haneke's Amour*.

**Argo:** Ben Affleck's latest film as a director is a memorable dramatisation of the CIA's rescue of six diplomats from Iran - an amazing real-life caper straight out of Ripley's *Believe It or Not!*



Ben, trying to look cool and unconcerned, in *Argo*.

It tells the true story of some imaginative derring-do on the part of a brilliant and unorthodox CIA agent called Tony Mendez (whilst managing to overlook considerable input from the Brits, but let's not let that get in the way of a good yarn.) Generally good to excellent reviews, except, yet again, from the miserable *Guardian*. One day, perhaps, they will lighten up and stop imagining that everyone is a social worker who works in Islington or Balham (these underpaid people cannot, of course, afford to live there, there are far too many rich *Guardian* readers already in residence). Believe or not, I actually read *The Guardian*, it's just that occasionally they are a little, actually more than a little, too bloody precious.

**The Beat That My Heart Skipped (*De Battre mon Coeur s'est Arrête*):** A young man torn between a life of crime and music in this noir thriller, set in the dangerous Parisian underworld. Excellent reviews: "Sensationally good, genuinely fresh and vivid" (*The Independent*, 5\*); "You shouldn't miss this. It echoes the work of the young Scorsese" (*The Sunday Times*, 5\*); "... a work of authority, maturity and intensity" (*The Guardian*, 5\*).



*Dans la pègre Parisienne avec Romain Duris (un agent immobilier véreux).*

**The usual fine wine and nibbles and now comfy seats. If you come early you will even be able to get ones with arms. Tuesdays at 7.30 in Hickling Village Hall.**

# J P INTERIORS

KITCHEN AND BEDROOM FITTER

20 YEARS EXPERIENCE

NEED HELP WITH YOUR KITCHEN OR  
BEDROOM ?

UNIT ASSEMBLY  
INSTALLATION  
WORKTOPS

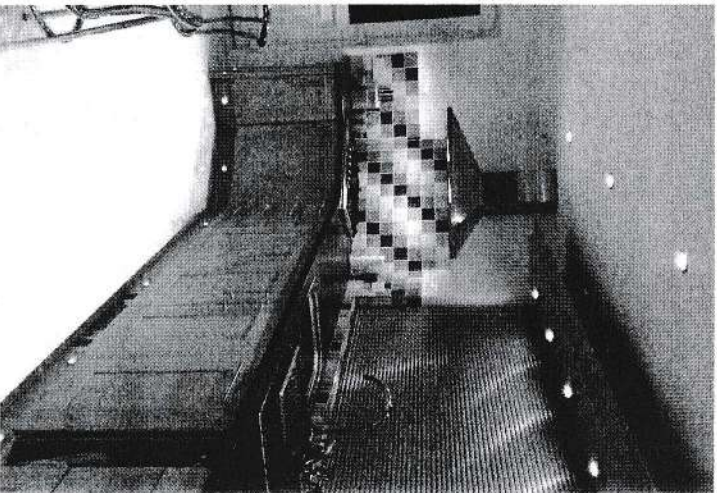
SINKS  
TAPS

CORNICES

PLINTHS

APPLIANCES

NO JOB TOO  
SMALL



CALL JASON FOR A FREE QUOTE

TEL : 01664 822795

MOBILE : 07837646544



**Could you picture someone else in your family?**

A new campaign is being launched this month to recruit an army of local carers to support adults who need help to live independently.

Shared Lives, which is being run by the County Council, aims to recruit carers from across the county to help support people with physical or learning disabilities, older people or mental health needs. All carers will receive training and ongoing support and will be paid depending on the needs of the person or people they care for.

Shared Lives is looking for carers who can provide a range of support:

**Long term accommodation and support:** people who have room in their home and are willing to have someone to live as part of their family for some time. This may be months or years.

**Short breaks:** people who can offer a short break for someone while the people who normally support them are having a holiday or have to be away.

**Regular short-term support:** people who can offer support in the day to promote independence and help people become part of their community.

Councillor Kevin Rostance, Chair of the Adult Social Care and Health Committee, said: "We are looking for caring people who have some time and space in their lives to help an adult. You may be a retired person who has room in your home; a parent who has spare time in the day or someone who works in the week, but has evenings or weekends free.

"Shared Lives is a vital scheme which will help older or disabled people to experience ordinary life with real relationships. Please get in touch if you think you can help."

Anyone who is interested in becoming a Shared Lives carer can visit

[www.nottinghamshire.gov.uk/sharedlives](http://www.nottinghamshire.gov.uk/sharedlives),

email: [sharedlives@notsec.gov.uk](mailto:sharedlives@notsec.gov.uk) or phone 0300 500 80 80.

## DAVID HEWITT AERIAL SERVICES

TV/DAB/FM/DIGITAL  
AERIALS FITTED &  
REPAIRED



TV/DVD/VCR TUNERS

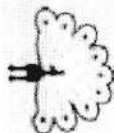
LOCAL SERVICE EST 32 YEARS



FREE QUOTES  
ALL AREAS COVERED  
SPECIAL RATES FOR PENSIONERS & DISABLED

Call 01664 820430

Corner Cottage, Clawson Lane, Hickling LE14 3AB



**P.C.O.X.**  
PEST CONTROL

WASPS - MICE - RABBITS - ANTS -  
MOLES - RATS - ETC.

Tel: 01664 822238

Mobile: 07799 211924

pcox99@resco.net  
www.pestcontrolpcox.co.uk

*Do you need your car cleaning?*

Do you have time to clean it? Do you have the  
patience to queue at your local car wash?

*How does a personal service on your  
doorstep, by professionals, sound to you?*

If you think you should be one of our clients  
contact us for free quote on 0800 64 22 786  
or visit  
www.smartvaluinguk.com  
for more information.

**SMART**  
VALUING UK

## Paws 4 Thought

Does your dog need exercising? Cat need feeding?

Going on holiday or working longer hours?

We can help with dog walking, Pet home visits

Small animal and dog boarding in our home

House sitting, collection & delivery service for your pet

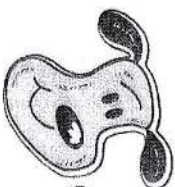
Call Sally or Martin

01664 823844 or 07890 889915

www.paws4thoughtoldalby.co.uk

National pet sitter registered and insured including CRB.

For all your pet requirements



Long Clawson Surgery  
Patient Participation Group



## Long Clawson Medical Practice & Pharmacy

### Patient Participation Group

### Wanted

A new member to fill a vacancy in the Patient Participation Group (PPG) at Long  
Clawson Medical Practice.

The PPG is a voluntary group of twelve patients of all ages who meet monthly at the  
surgery. We come from various backgrounds and experience but the one thing we  
have in common is an enthusiasm for trying to make the best better!

In the past we have voiced patients' concerns over:

The closure of the bed at Hunters' Lodge – the decision was reversed  
The proposed changes to the local bus routes serving the surgery – these  
have been postponed

We raised sufficient funds to re-open a Citizens' Advice Bureau surgery. This  
is now available once every two weeks on Thursday mornings at Long  
Clawson Medical Practice. It is available to every one and is usually  
fully booked every session.

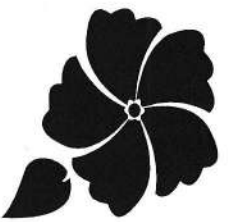
Villages currently not represented on the PPG are: Hose, Eaton, Holwell, Grimston,  
Wartnaby, Plungar, Ab Kettleby, Nether Broughton and Upper Broughton. We  
would, however, be interested in hearing from anyone who believes that they could  
contribute to the work of the group.

If you believe that you could contribute in shaping the local health services and how  
they are delivered in our community, then you could be the person to fill this va-  
cancy.

For more information please contact LMCP at:  
email: lcmpadmin@gp-c82016.nhs.uk

Ellen Mell  
Chairman

# Complete Foot Health Care



**Yve - Foot Health Practitioner**

**M.C.F.H.D/M.A.F.H.D**

**Appointments:**

**mobile no. 07875 733039**

**June - Holistic Therapist**

**I.T.E.C/C.I.B.T.A.C/V.T.T. Member ABI**

**Appointments:**

**mobile no. 0785 5103862**

**We are able to offer professional treatments in your own home, fully insured practitioners.**

**Yve will assess and treat your foot problems, to include:**

- Cut & file thickened, damaged nails**
- Ingrowing Toenails**
- Treat Callus, hard cracked skin**
- Removal of Corns**
- Verrucas**

**June offers a wide range of treatments:**

- Reflexology**
- Hopi Ear treatment**
- Pedicure/Manicure**
- Facials**
- Waxing**
- Massage**

**For All Enquiries & Price List:**

**Contact June on 0115 9892669**

## From Nagamo to Keyworth – Japanese students welcomed at South Wolds

Students at South Wolds Academy in Keyworth welcomed a group of 5 Japanese students from their partner school in Nagano in March. The students hosted the group of 16 and 17 year olds in their homes for 5 days. They spent 3 days in school finding out what life is like in a UK school, then a weekend with their host families, before spending a couple of days sightseeing in London.



Last October 14 students from South Wolds visited the school in Nagano, so they were looking forward to showing their friends life in the UK. They experienced a totally different culture in Japan, as Maddy in Year 11 explained:

“I loved the different culture. We slept on futons, ate sitting on the floor, and they even had heated toilet seats! I can't wait to go back and see my exchange family again” said Maddy in Year 11.

“We ate all our meals with chop sticks – my technique wasn't perfect but as long as I could get the food from the plate to my mouth, it was fine. I wasn't too keen on the fermented soy beans though – they were quite slimy” said Benny in Year 11.

The group were particularly surprised to see the Japanese students change out of their school clothes, and spend 20 minutes cleaning the school before going home! The students described their trip to Japan as unforgettable and all have said that they would go again tomorrow if they could.

South Wolds Academy is one of just over 250 schools in the UK teaching Japanese, according to Shinobu Motokawa, who teaches Japanese at the school.

“For students who opt to study Japanese, the trip to Japan and the return visit here are a highlight of their time at South Wolds. It really brings the language and culture to life when the students meet young people of their own ages, and find that despite a huge difference in culture, they still have a lot in common.”

# KEALY'S MOTORS



M.O.T's, BODY WORK,  
INSURANCE WORK, TYRES,  
EXHAUSTS, FREE QUOTES,  
FREE COLLECTION AND  
DELIVERY.

**PHONE SHAUN ON**

**01664 822072**

## Village Directory

<b>150 Club</b>	Liz Vear	822562
<b>Beavers</b>	Sue Youngson	01949 81688
<b>Bellringers</b>	Lynn Irving	820071
<b>British Legion</b>	Colin Henson	01949 81453
<b>Church Choir</b>	Anita Kirkman	822270
<b>Councillors</b>	John Cottee (County)	
	cllr.john.cottee@nottsc.gov.uk	
	Tina Combellack (Borough)	
	TCombellack@rushcliffe.gov.uk	
<b>Country Fair Committee</b>	Margaret Woolley	822319
	Bob Naismith	823293
<b>Cricket Club</b>	P. Parkes	822370
	JD Walker	822244
<b>Cubs</b>	Jean Rogers	822146
<b>Gardening Club</b>	Mr B. Baxter	01949 81374
	Mrs B. Grundy	01949 81442
<b>Good Neighbours Scheme</b>	Liz Vear	822562
		or 07805 407229
	Kay Hand	822612
<b>Guides</b>	Alison Popplewell	01949 81604
<b>Hickling Pre-School</b>	Carol	07788 932829
<b>Hickling Standard</b>	see back inside cover	
<b>Kinoulton School</b>	Mr Savage (head)	
<b>Kinoulton School PTFA</b>	Sarah Parris	01949 823925
<b>Neighbourhood Watch</b>	Keith Brown	822625

<b>Nottinghamshire Police</b>	Control Room	
	Non-emergency number	101
<b>Open Gardens</b>	Diane Foulkes	823740
<b>Pantomime</b>	Bob Naismith	823293
<b>Parish Council</b>	Jo Cartmell (Clerk)	822866
<b>Parochial Church Council</b>		
	Rector	Revd Alison Fulford 01949 81657
	Churchwarden	Margaret Wood 822257
		John Bloor 822682
	Treasurer	Alex Thomas 823420
	Secretary	Cathy Hetherington 823707
<b>Save the Children Fund</b>	Rachel Henson (chair)	01949 81453
	Angela Sallis (sec.)	822597
	Molly Collishaw	823115
	Barbara McEwen	822834
	Liz Smith	823428
<b>Scouts</b>	-	
<b>Silver Jubilee Club</b>	Maureen Jackson	01949 81325
<b>Sunday Club</b>	see PCC	
<b>Toddlers</b>	-	
<b>Vale Beaders</b>	Elizabeth Evans	01949 81501
	Jackie Haynes	822364
<b>Village Hall</b>	Barbara McEwen (Chair)	822834
	Tim McEwen (sec.)	822834
	John Robinson (treas.)	822762
	Phillipa Jacks (bookings)	823622
<b>Women's Institute</b>	Mary Smith (Pres.)	822559
	Gweneth Cane (Sec)	0115 937 3970
	Brenda Greaves (Treas)	822324

## Diary

2nd April	7.30	Village Hall	Film Club - Sideways
7th April	9-11	Village Hall	Village Breakfast
12th April	7.30	Village Hall	Digging the Dead
16th April	7.30	Village Hall	Film Club - Barbara
18th April	7.30	Village Hall	WI - Monthly Menu of Mirth
20th April	2.00	Village Hall	Pre-School Jumble Sale
21st April		Chambers	Open Garden
27th April	9-11	Village Hall	Scrap Metal Skip
30th April	7.30	Village Hall	Film Club - Amour
5th May	9-11	Village Hall	Village Breakfast
11th May			WI trip to Blenheim Palace and Oxford
14th May	7.30	Village Hall	Annual Village Meeting and PC AGM
16th May	7.30	Village Hall	WI, So you think you know Nottingham
19th May	11.00	Basin	Village Walk
28th May	7.30	Village Hall	Film, The Bear that my Heart Skipped
2nd June	9-11	Village Hall	Village Breakfast
8th June			Ceilidh and Hogroast
9th June			Country Fair
15th June			Pre-School sponsored cycle ride
27th June	7.30	KVH	PTFA Wine and Wisdom Evening
11th July			WI trip to Harlow Carr and Harrogate
20+21 July		St Luke's	Open Church
22nd Sept		Village Hall	Plant and Produce Show
1st November	7.30	Village Hall	Village Hall Quiz Night

### Hickling Standard. Extra Copies - Order Form.

I would like to order \_\_\_\_\_ extra copy/copies of the Hickling Standard.

One year's subscription for one extra copy is £3.  
I enclose £\_\_\_\_\_ in payment for 6 issues.

Name: \_\_\_\_\_  
Address: \_\_\_\_\_



Copies should be collected on publication from Maggy Jordan.  
Please return this form to  
Maggy Jordan, Ivy House, Main Street, phone 01664 822088

## Hickling Village Newsletter - Committee

Chairman; Tim McEwen - Tel. 822834 or [tmcewen@globahnnet.co.uk](mailto:tmcewen@globahnnet.co.uk)

Treasurer/Advertising; Andrew Terry } Tel. 822088 or

Copy & Secretary; Maggy Jordan } [a.terry125@btinternet.com](mailto:a.terry125@btinternet.com)

Copy Collection; Jane Fraser - Tel. 822569

Please get in touch with any of us if you have any comments or suggestions.  
We would welcome any contributions for future issues - articles, opinions,  
reports, recipes, poems, brain-teasers - whatever you would like to see in  
print! WE NEED YOUR HELP!!!

### 2013 Copy Dates:

June/July 15/5/13 August/September 7/7/13

Copy must be received before these dates to guarantee its appearance.

Please note that the committee reserve the right to edit or omit any material submitted. Opinions expressed in published articles remain the responsibility of the author. Articles may be published anonymously but the committee does need to have details of authorship before publication.

If you are submitting articles ready for publication - (either typed or in computer format) we would be grateful if you could send it in A5 size.

### COPY IN ANY FORM WILL BE GRATEFULLY RECEIVED!

e-mail address - [a.terry125@btinternet.com](mailto:a.terry125@btinternet.com)

- please make sure that attachments are sent in Microsoft Word or Publisher compatible formats - thank you!

### Handwritten Contributions.

If you have handwritten contributions please pass them for typing to:

Maggy Ivy House, Main Street or  
Hazel Copperoaks, Bridgate Lane or  
Jane Mill Lane Cottages

Otherwise please continue to pass any contributions or ideas to any of the other committee members. Thank You!

### Advertising Rates (one advert for one year - 6 issues.)

Front inside cover - £50 Back cover - £65 Quarter page - £20

Half page - £30 Full page - £45

(enclose payment with copy for the advert and give to a committee member before the copy date.)  
Personal wanted/for sale adverts are FREE.