

A PERSONALISED PRIMARY EDUCATION FOR YOUR CHILD

Our small class sizes are invaluable to each child's educational and personal development

WE HAVE 100% SUCCESS RATE AT 11+



"Faced with the prospect of our daughter moving into a joint year 2/3 class of 34 at our local school, we knew that would not suit her learning style, so we enrolled her at Colston Bassett School. The results were almost immediate and dramatic in her positive development in all areas of her skills

With a class size of 10 (the largest year group in the school) she very quickly settled in and revelled in the challenge of learning. In short we feel we have given our child the best possible environment to realise her potential."

Parents



TO SECURE YOUR CHILD'S FUTURE TODAY,
CALL 01949 81118.

Colston Bassett Preparatory School

School Lane, Colston Bassett, Nottingham NG12 3HD

www.colstonbassettsschool.com

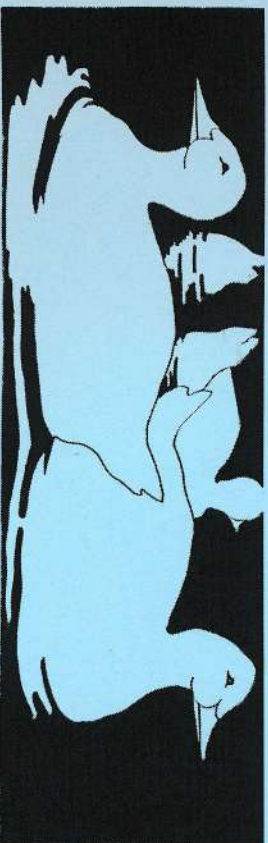


The

Hickling Standard

Village Newsletter for
Hickling and
Hickling Pastures

Vol. 111 - April - May 2017



WE NEED YOUR HELP PLEASE

HICKLING SUMMER FETE & OPEN CHURCH EVENT

SATURDAY 22ND JULY & SUNDAY 23RD JULY 2017

10AM - 4PM

This is a **FUND RAISING EVENT** with **ALL** the money raised going locally to the Hickling Church and the Hickling History Group

WOULD YOU LIKE A STALL? CONTACT PAULINE CHELL 01664 822835

VOLUNTEERS NEEDED FOR STALLS, REFRESHMENTS & SETTING UP

Interested? contact **GILL BLOOR 01664 822682 / DOROTHY CHAHAL 01664 822369**

URGENTLY WANTED and we are collecting NOW

Dummies/Mannequin on loan for male WW1 and WW11 Uniform displays

Photographs, family histories & any information on the 11 men who died during the World Wars –John Faulks; Stephen Crump; Jack Hill; Charlie Simpson; Cecil Simpson; William Salt; Samuel Doubleday; William Collier; C.E.Hollingsworth; T.C.Starbuck and C.R.Wright.

Books –Hardback & paperback books for the book stall

Children's Toys, Games,& Books –an opportunity to clear out the toy cupboard

Tombola Items –please donate unwanted gifts, household items, chocolates etc

Bottle Stall – eg perfume; alcoholic drinks, etc Any item in a jar or bottle

Tools - a chance to get rid of unwanted tools of any description.

Preserves – please donate jars of homemade jam, marmalade, chutney etc

Scarves and Accessories – Spring clean your wardrobe – we are collecting scarves, gloves, handbags and belts for this stall.

***TAKE YOUR DONATIONS TO PAULINE CHELL,
MARSH'S PADDOCK BUT PLEASE TELEPHONE HER FIRST SO SHE
IS EXPECTING YOUR ITEMS -01664 822835***

For further information about this event contact Carol Beadle 079644 74673

HANWELL WINE ESTATE

CRAFT FAIR

Sunday 14 May - 1pm to 6pm



Free rural skills
workshops



Arts & Crafts



Taste the wine!



Children's
activities

Have a go at drawing, painting, textiles with one of our experts -
fun for all ages. Join us for a wonderful day out.

WWW.HANWELLWINE.CO.UK

Hanwell Wine Estate

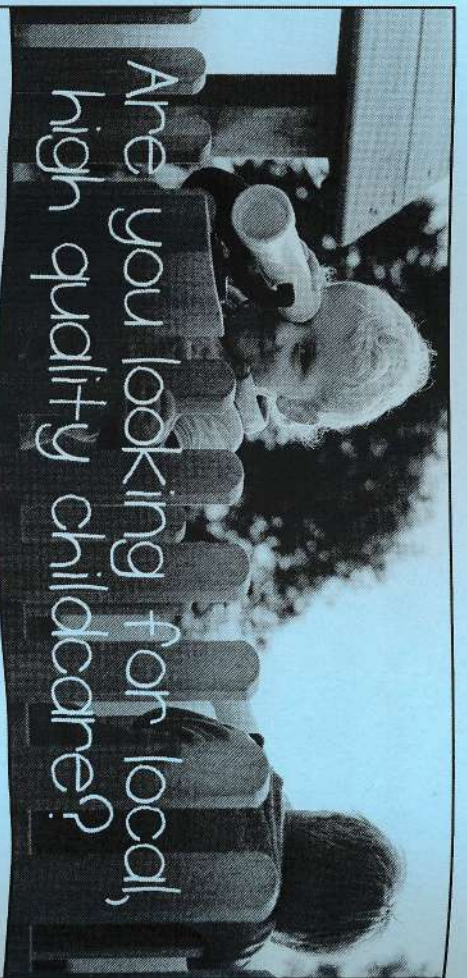
Hickling Pastures

Nottinghamshire

LE14 3QG

Tel: 01949 81393





Discover this beautiful, unique, family-run day nursery.

Open 8.00am – 6.00pm, all year round

“Millfield is **exceptional, caring, attentive, fun, nurturing and wonderful.**

The outside space is unbeatable, the activities are great fun and innovative, but most of all, the staff are caring, kind, enthusiastic, skilled and a privilege to know. I have absolutely no hesitation in recommending Millfield Nursery to any parents.”

Sheila Greaves (Parent)

Visit us today and find out why Millfield is the best nursery for you and your child.



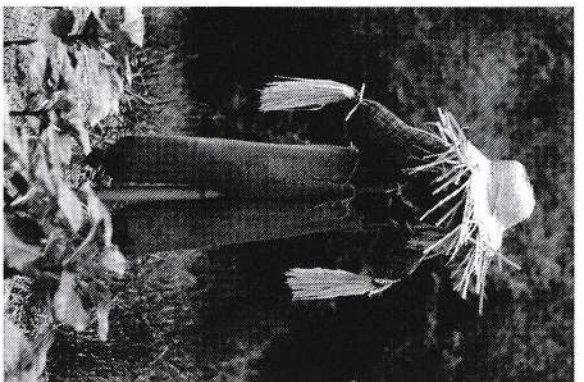
Millfield
Nursery School

Day Nursery & Pre-school For Children Aged 2-5 Years

Tythby Road, Cropwell Butler
Nottingham NG12 3AJ
0115 9334085

www.millfieldnurseryschool.co.uk

Hickling Scarecrow Weekend 2017

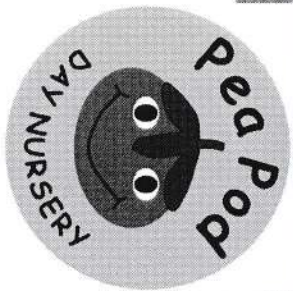


Preparations have started for this year's Scarecrow Weekend on 9 and 10 September.

We've chosen a theme for this year that should be fun for young and old visitors alike and will hopefully give you plenty of scope and inspiration for building your scarecrow. The theme will be: **Fairytales & Nursery Rhymes**
This year we'll be raising funding for **Marie Curie, the QMC Help-pad appeal and village groups.**

There will be a **social event for all the village** on the Saturday evening. We're still working on the details, but please put the date in your diary.
If you're keen to get involved in the organisation of the Scarecrow Weekend in any way, please get in touch.

Derk van der Wardt
Hickling Country Fair Committee
vdwardt@gmail.com



The nursery is split into 3 separate rooms which enables us to promote a home from home experience with a very friendly, warm environment and in our rural setting the children have the opportunity to explore open fields and have access to a number of different animals.

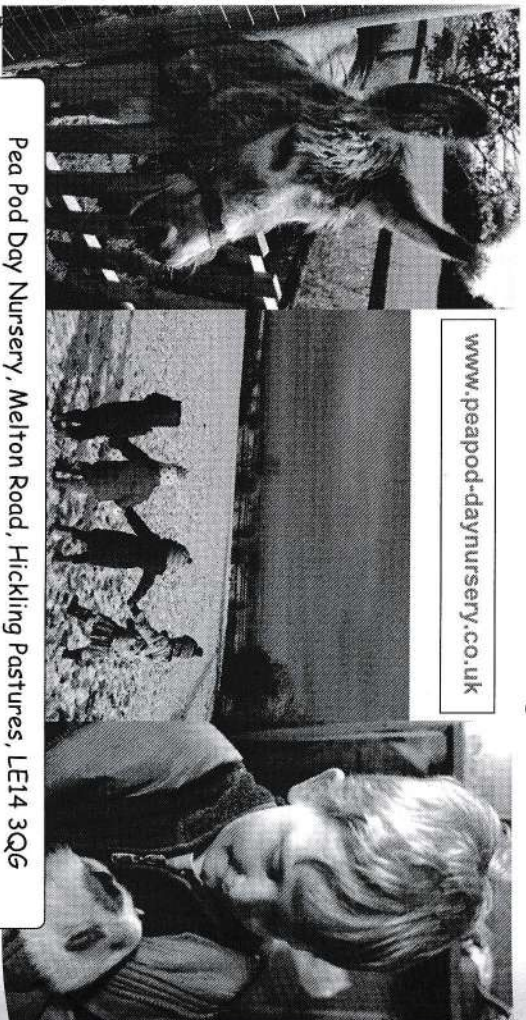
Pea Pod Day Nursery is a small, family run 29 place day nursery at Hickling Pastures, on the A606 between Melton and Nottingham, only a few yards from the A46 roundabout.

Our 11 place pre-school room is led by Amy who is a qualified Early Years Teacher.

We plan our daily activities around the EYFS and foster children's interests. Amy builds and challenges children's learning to ensure all children have the qualities to become good listeners, are friendly, happy, independent learners who have the confidence to have a try at everything! We ensure all children have the foundations in place for them to have the qualities to succeed with love for learning; ensuring the children have a smooth transition when starting school.

Call in to have a look around for more information, or ring Louise on 01949 81522

www.peapod-daynursery.co.uk



Pea Pod Day Nursery, Melton Road, Hickling Pastures, LE14 3QG

**ST LUKE'S CHURCH, HICKLING
Open Churches Weekend 22/23 July**

It is always a joy to drive down Bridegate Lane, with the village at the end of the long winding road, and to see in the distance the church spire nesting behind pretty cottages. The church was one of the first to be built in this area after Southwell Minster and has been the place to worship Christ for thousands of people over the centuries. One of the best ways of getting to know our church is to clean it. One can sit in the quietness and just muse about all the good times and bad times people like us would have experienced. The various invaders, Henry VIII moving away from the Catholic church, Cromwell and his Parliamentarians causing havoc, plagues etc. The good times too. All the weddings and baptisms, the thanksgivings after wars, coronations, and getting over illness etc. The walls of our church have seen it all. From ancient times, along with the seasons, the church has given to many a structure and purpose to their lives.

Five years ago Southwell Minster had the brilliant idea of promoting the history of the 150 churches in Nottinghamshire. It was such a huge success they are doing it again this year. North Notts will be 8/9th July and we come under South Notts 22/23 July. Southwell, as before, will be promoting this event so all we have to do is open our doors and welcome visitors from near and far. Southwell is very keen that our church buildings should be used more widely for the benefit of our communities. The service will be as usual Sunday 6.30 pm.

PLEASE SEE ADVERT FOR FULLER INFORMATION.

This time we are sharing the Open Church project with:

THE HICKLING HISTORY GROUP

who are putting on 2 displays. It is another chance to see the Governor Fred Warner display. He was born in Hickling in 1865 and became 26th Governor of Michigan USA. His beautiful house in Farmington, Michigan, was turned into a museum. He was an excellent Governor and his life is still celebrated there. The other display is on Hickling men who died in WW1 and WW2. We are also doing the excellent graveyard talks – not to be missed!!

We are, of course, looking for helpers, ideas, more stalls, cakes, prizes, bric-a-brac, collectables, and even scarves. We already have 70 beautiful scarves! Thank you and look forward to you joining us. We have just started planning this, so watch this space!!!!

Tree Felling
Lopping,
Pruning,
Ground
Clearance,
Tree Surgery,
Fencing,
Planting,
Logs,
Wood
Chipping,
Hedges
Maintained.
Fully Insured

Tel. 01664-822471



Keith Wadkin & Son

Tree Specialist

Hickling

Melton Mowbray, Leics.

LE14 3AQ

Established 1959

R & E L Birley Motor Engineers

East End, Long Clawson. Telephone 01664 822450



Approved MOT testing station.



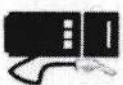
Servicing and repairs on car & commercial vehicles.



Tyres, balancing, punctures & wheel alignment.

Accident and breakdown recovery service.

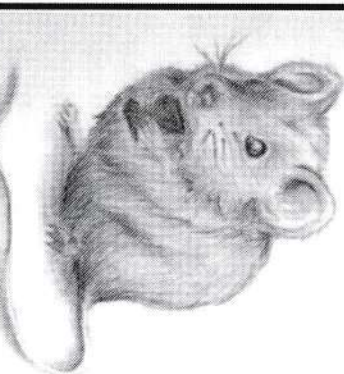
Forecourt sales for Petrol, Diesel & Oils etc.



Established in Long Clawson for over 40 years.

E-mail: birleys@long-clawson.com

Web page: <http://birleys.long-clawson.com/>



Many thanks to everyone who took part in our Christmas story and many thanks to everyone who helped and supported us!

We raised £450 in total.

This money has been divided equally between the Hickling Church clock fund and Farms for City Children.

Thank you!

A couple of notes from Kinoulton School governors

1. There are currently vacancies for co-opted governors. These are appointments made by the governing body and do not involve elections. A recent skills audit revealed that we have no-one with a legal background and that we are short of 'finance experts'. We would especially welcome applications from those involved in these two areas but the basic qualification is, as always, a desire to support the local school in its bid to maintain high standards (in the top 3% of all schools this year) and to seek improvement. Minimum involvement would be 3-6 meetings per year. If you would be interested, please contact the school for further information.

2. Some readers may be aware that the school, in conjunction with Hickling Pre-School, has been looking, for some time now, to bring pre-school provision on to the school site. All the indications, investigations and surveys suggest that this would be beneficial to all parties concerned. There is one major problem. We do not have enough money! The Local Authority backs the plan but cannot support it financially. There is nothing available directly from the Government. Both the school and pre-school group have some money available but not enough to fund the project entirely. The working party has exhausted its ideas – apart from this one.....if any of our villagers have any knowledge of funding streams or setting up fundraising schemes, contact with recent National Lottery winners or someone in the family who is a generous multi-millionaire..... You get the drift.... please get in touch with us. Thank you.

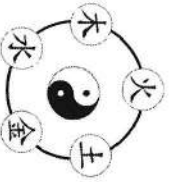
Sheila Hill (chair of governors)

Traditional Acupuncture

Fiona Lee

BA (Hons); Lic. Ac; MBAcC; BSc (Hons); BFRP

BACC Member
www.acupuncture.org.uk



Tel : 07443 461362
www.keyacu.co.uk

Traditional Acupuncture works to maintain the body's equilibrium by focusing on all aspects of wellbeing: physical, mental and emotional.

FREE 20 minute preliminary consultation available
to help you decide whether acupuncture is appropriate for you.

Bach Flower Remedy

consultations for emotional wellbeing also available.

Appointments available at Key VI Fitness, Bunny Lane, Keyworth



YOUR LOCAL INDEPENDENT DRY CLEANING SERVICE

- Repairs and Alterations
- Day and Evening Wear
- Silks and Wedding Dresses
- Duvet, Eiderdowns and Sleeping Bags
- Laundered Shifts Service
- Free Removal, Collection and Re-Hanging of Curtains

13 Main Street, Keyworth, Nottingham NG12 5AA. Tel: (0115) 937 6599

VILLAGE HALL NEWS

DONATION

The committee has been delighted to receive a very generous donation from Vic and Jackie Haynes. Jackie writes:

'The donation to Village Hall funds is to acknowledge the community support we experienced last year when we both had multiple health problems. It is also in memory of Vera Skidmore (Jackie's mum) who lived at 'The Orchard' for over 30 years and was an active member of the community.'

We are most grateful to Vic and Jackie and will be putting the money towards the continued improvement and maintenance of the hall.

COMMUNITY FUNDING

Village Breakfasts has received funding from Cllr Combellack for a new toaster. We are now the proud owners of a bright red 6 slice Dualit toaster which is infinitely more reliable than our previous equipment (largely sourced from village jumble sales!)
Thank you.

GRANT APPLICATION

Tim McEwen has applied for a £10,000 Awards for All grant for the hall. If successful, this will allow us to replace the large window at the side of the main hall and also the two small windows at the side and rear of the building.

PLANNED IMPROVEMENTS

Now that the interior of the hall is not only looking good, but is, thanks to the new insulation also much warmer, we are turning our attention to the exterior. The Bell Tower needs repainting and we would like to tidy up the back of the building, resurface the car park and possibly replace the boundary fence. Unfortunately, work like this does not qualify for any grants so we may have to build up our funds before all of these jobs can be done. At the moment we are in the process of getting quotes for the resurfacing work and hope to have the Bell Tower painted at Easter.



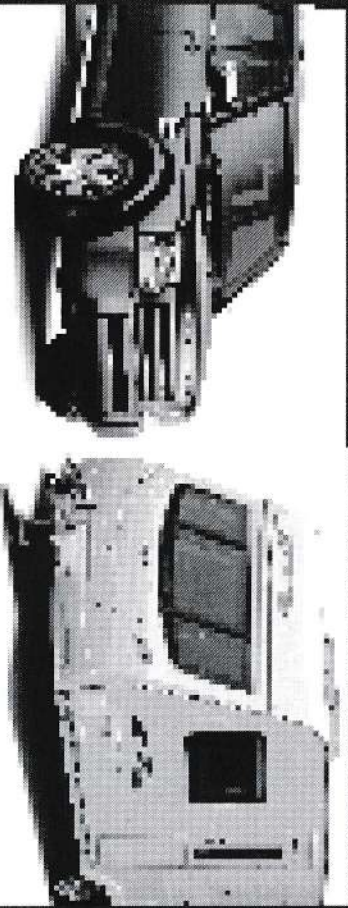
Mobile Car & Caravan Cleaning

Choose from... Car Wash • Mini Valet
• Mini Valet and Polish • Full Valet

**Mobile Caravan Cleaning
Car Paint & Fabric Protection
Fully Mobile Service**

07949 518 366

www.smartvaletinguk.com



Look Smart, Be Smart, Call Smart!

KITCHEN AMNESTY

We have recently checked the contents of the Village Hall kitchen and have found that a substantial amount of china and glass is missing. While some of this can be attributed to occasional breakages, several items are missing in such quantity that they can only have been borrowed and not returned.

These include:

22 plain glass tumblers, 10 mugs, 8 small milk jugs, 4 sugar bowls, 7 cups, 4 red trays, 1 black non-slip tray.

(All china mentioned is white.)

If you have hired the hall for a party and taken things home by mistake, or forgotten to return borrowed equipment then

WE WOULD LIKE IT BACK PLEASE!

You can return items directly to the Hall or to Cobblestones. NO QUESTIONS WILL BE ASKED!

On a more serious note, it is likely that as a result of these losses we shall have to start **charging for use of the kitchen**. Accidental breakages will occur, but we cannot keep replacing items at this rate. Please help us to keep the Hall a pleasant and well-equipped place for everyone in the village to use and enjoy.

Thank you

Barbara McEwen



*Coton Manor
Bluebell
Woods
(see page 19)*

HICKLING WI (Inspiring Women)

We are witnessing extraordinary times! History is being written every day. On the TV news this evening the interviewer actually asked the Westminster correspondent to inform us on the LATEST amazing Brexit news. This time relating to the House of Lords and the two clauses. We wake up each morning wondering what message President Trump is going to put on the social media. Brilliant civil servants have never been more needed while they untangle and put into order what the electorates have voted for.

However, in heavenly Hickling, with the daffodils suddenly brightening the gardens with a golden glow, the first of the blossom trees showing colour – and, of course, the grass on the lawns now needing trimming, we in the WI have been having our own amazing time. In January, our members and friends, displayed their family antiques on the table and the Charles Hanson representative amazed us with her knowledge while she examined each piece. Two members received very interesting news. We have since become ardent 'Flog-it' fans and are now planning a visit to the auction rooms!

In February we had a speaker about Japanese gardens. She visits her son in Japan twice a year and has become passionate about anything Japanese. She therefore spoke with great authority and knowledge, and we hung on to her every word on how the Japanese way of thinking is reflected in their beautiful gardens, especially the ones in Kyoto.

Gillian Wilkinson, one of our members, is very artistic. Not only did she enter a national fun competition for a garden in a bras which 450 women participated in, although perhaps not everyone had perfect carrots for supper which she had grown, but she also designed and made a WI bag which was highly recommended and a photo of it was in the national magazine last month. Well done Gillian. This month we are needing a member to write a poem about climate change and how it could affect her life. Poets, please step forward!!!!

This month we have the AGM, but also a talk on Istanbul, the fabulous city which straddles East and West. Apple tea and Turkish Delight will be served.

April 20 we have Fay Glover talking about her role as the 'Lord Mayor's Sergeant' in the Council House, Nottingham. She showed us around the Council House recently so we invited her to speak about being a woman in a role which historically has been carried out by a man. 18 May our speaker will talk about the extraordinary Mittfords, so anyone interested in recent history will love this one. 15 June we are having a go at making pottery – in Hickling village hall! The demonstrator is going to dazzle us with her extrovert personality and skill – I know, as I saw her on TV.

Visitors are welcome to our talks which now always start at 7.30. Plus do join us on our coach trips, this year to the National Arboretum, Lichfield on 13 May, or the Black Country Museum on 2 September. We always welcome new members when you will have the opportunity of meeting new people, and participate in all the other trips and activities we do too - for example a trip to Bruges, literary lunches, private garden visits, history walks, and even croquet! Do join us.

THANK YOU!

Thank you to all the friends and neighbours who supported Jon and I during his illness at the end of last year. We were so touched by all the love and care shown to us. Hickling is such a fantastic community!

Thank you also for supporting Mesothelioma UK (the charity for asbestos-related lung cancer). £1,244 was collected at the funeral and from subsequent donations. This will support the research and the provision of specialist nurses based at Glenfield Hospital in Leicester.

Liz Vear



• 3.5yd3 to 35yd3 skips with drop doors
 • Prompt & Reliable Service with no Hidden Extra Costs
 • Household and Trade enquiries welcome

01664 822797
 Mini Digger & Skip Loading Dumper Hire



WOODLANDS DEVELOPMENTS
 The Old Fosse
WOODLANDS ELECTRICS
 The Old Fosse

All aspects of building work undertaken

No job too small

Design service available from
Robertson
Building Design Consultants
 Trevor Broadley
 07985 953 176 or 01949 81095
 tcbwoodlands@hotmail.com

www.woodlandsend.co.uk

Hickling Pre-School Newsletter

We are now well into the New year and the warmth is beginning to return as the children seem to want to be outdoors playing more and more.

Big Warm Hello To.....

Fenella and Ben.....we hope you have a very happy and enjoyable time at the pre-school.

Term Dates.....

The pre-school closes for the Easter holidays on Friday 31st March and reopens on Tuesday 18th April 2017.

The half term holiday for the summer term is the week commencing Monday 29th May (Bank Holiday) and the pre-school reopens on Monday 5th June.

Please remember that the pre-school works in conjunction with The Hideout Club to provide wrap around care. Transport to and from the pre-school is provided by The Hideout Club to ensure seamless care.

Quiz Update.....

Well after another very enjoyable Stupid or Cupid Quiz, which had an exceedingly close result (in fact five teams were tied for second place!), the final amount raised for the pre-school was £615.00.

A huge Thank You to all who came along and supported this event which is proving to be more popular every year.

Watch this space.....

We are hoping to hold a ceilidh (Irish Dance) night in the near future, more details to follow.

The Hickling Good Neighbour Scheme

HGNS supports anyone in Hickling or Hickling Pastures who requires a lift to any medical appointment or hospital visit etc. At the present time we could do with a few extra volunteers, so if you could spare a half day every few months and you are willing to become a volunteer with the scheme please contact Liz on 01664 822562 or 07805 407299.

If you require transport don't hesitate to ring and request a lift. Please use the scheme so that we can keep it running!

J P INTERIORS

KITCHEN AND BEDROOM FITTER

20 YEARS EXPERIENCE

NEED HELP WITH YOUR KITCHEN OR
BEDROOM ?

UNIT ASSEMBLY

INSTALLATION

WORKTOPS

SINKS

TAPS

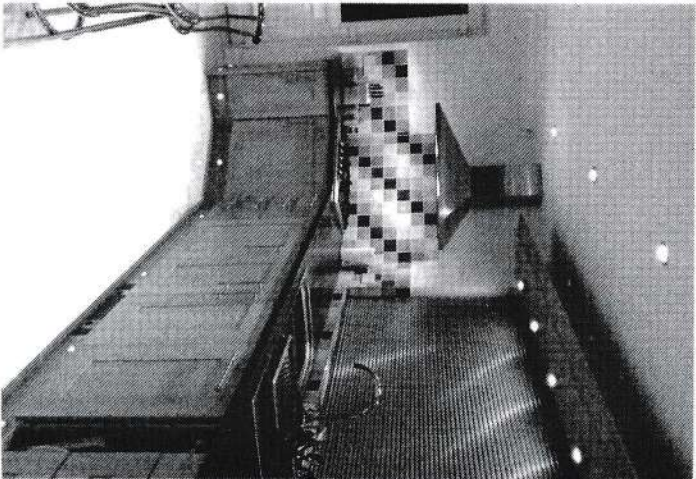
CORNICES

PLINTHS

APPLIANCES

NO JOB TOO

SMALL



CALL JASON FOR A FREE QUOTE

TEL : 01664 822795

MOBILE : 07837646544

The Daft Family

Carol Beadle received this e-mail from a woman living in Australia. If anyone has any information about any of the Daft family she would be delighted to pass it on.. You can contact her on 01664 822195.

My partner and I visited Hickling in May 2016. We had discovered that Graham's family originated from that area. We had a print out written by someone called Gwen O'Grady. I'm not sure who this lady is. It was given to Graham by his brother who doesn't have a good memory these days and can't tell us how he actually got it. Gwen O'Grady was a daughter of James Stone and Ethel May Daft. Don't know if these names would mean anything to you.

The cover page says 'The Daft-Fisher Story, 1600-1997.

The tree near the start of the booklet starts with Richard Dafte m. Joane Frauncis 1630. They had three children - Elizabeth, George and Elizabeth.

We were given your email addresses by ringing the number of someone on the church board. She told us that one of you might be able to give more information re the Daft family in that area.

Graham has always thought of himself as Australian through and through and was fascinated to find the village and churchyard and loves the idea of 'knowing' his English heritage.

We would be interested to find out anything that we can re the history and current family. I can also send you a copy of this booklet we have if it's of any interest to you.

We hope to be in England again sometime in 2018 and will definitely visit the Hickling area again.

**SOUTHWELL DIOCESE/PCC OPEN CHURCH EVENT
HICKLING CHURCH**

SUMMER FETE

22 & 23 July, 10 am to 4pm

View the long history of the church
Listen to the choir and organ recitals
FREE Graveyard tours
Tower tours

Plus the Hickling History Group will be showing
HICKLING WORLD WAR 1 AND 2 DISPLAY

GOVERNOR FRED WARNER DISPLAY

Many stalls including: preserves and home made cakes,
collectables, plants, bottle, scarves, tombola etc
HOT AND COLD REFRESHMENTS

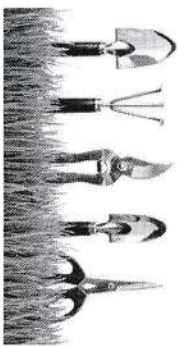
FREE ADMISSION

Proceeds shared between Hickling Church
and Hickling History Group

INFORMATION: Gill and John Bloor Tel: 822682

Dorothy Chahal Tel: 822369

Stall information – Pauline Chell Tel 822835



Gardening Work Undertaken

Digging, weeding, planting, hedge
trimming, lawn mowing, general
tidying, etc

Contact Keith at 9 Pinfold Close

Kinoulton

Telephone 01949 81699

e-mail

keith.ambrose1@btinternet.com

£10 per hour

**Hickling History Group presents
Guided Walks**

East Bridgford - Wednesday 17th May,
6.30pm. Meet at St Peter's Church. We shall
be given a brief history of the church build-
ing and a chance to look at the main fea-
tures, both inside and out. After this there
will be a guided tour of the village by mem-
bers of the East Bridgford History Group.
This group has produces a village walking
companion leaflet which will be given to us
on the night. At the end of the walk, The
Royal Oak pub on Main Street offers us a
comfortable and welcome place to end the
evening. *[Please park with care and consid-
eration in East Bridgford]*

Bingham - Thursday 1st June, 7.00pm. Meet
under the Buttercross in the market place.

For more information or to book a place on
either walk please contact Pauline Chell on
01664 822835, numbers are limited.

Hickling Village Hall

Presents a coach trip to

**Heart of the Shires Shopping Village and
Coton Manor (famous for its bluebell wood)**

Thursday 27th April 2017

In the morning

Heart of the Shires Shopping Village, lots of individual and unique shops
selling a wide variety of products set within a beautiful rural surrounding.
There are tea rooms and plenty of places to sit and relax.

Then on to

Coton Manor Gardens, situated in the Northamptonshire countryside, with
a ten-acre garden which was originally laid out in 1925. There is a magnifi-
cent 5 acre wood, we hope to be there when the bluebells are in flower,
and a wildflower meadow. There is a stableyard café and a nursery for
plant purchases.

Cost including all admission charges £30 per person

Pick up Neville Arms, Kinoulton at 8.20am and Hickling Village Hall 8.30am

Tickets and further information from Pauline Chell, 01664 822835

Hickling WI

Presents a coach trip to

The National Arboretum & Lichfield

Saturday 13th May 2017

Following numerous requests we are delighted to be able to offer a visit to
the National Arboretum at Alrewas, Staffordshire.

Later in the afternoon our coach will take us into Lichfield where there will
be free time to shop, visit the Cathedral and explore this interesting town.

Cost £25 per person

Pick up Neville Arms, Kinoulton at 8.20am and Hickling Village Hall 8.30am

Tickets and further information from Pauline Chell, 01664 822835

What's happening at Hanwell Wine Estate?

Spring has sprung at our local vineyard and there's a fantastic calendar of events in which to get involved. A wide range of 'Rural Antics' workshops is being hosted in the newly converted barn on the vineyard estate. And owners Helenka and Will Brown are inviting friends and neighbours to join them for two fantastic events in May.

Rural Antics Arts and Crafts Fair – Sunday 14th May

A family arts and crafts fair event is being held on Sunday 14th May to give a flavour of the different 'Rural Antics' workshops on offer at the vineyard. Have a go at different activities free of charge, with experts on hand to give live demonstrations. There will also be arts and crafts stalls, unique hand-made items and gifts to buy, free activities for all ages, wine tasting and of course tea, coffee and delicious cake.

Vineyard open day – Saturday 27th May

On Saturday 27th May, the vineyard gates will be open for the annual Hanwell Wine Estate Vineyard Open Day. With free entry for all, it's a date not to miss.

Wine tasting and vineyard tours – July, August and September

Bookings are now being taken for summer vineyard tours and wine tastings. It's a lovely way to spend an afternoon or evening - why not treat yourself, or better still, treat a friend or family member too. Prices start from just £10 per person.

For more information on wine tasting, vineyard tours, workshops, events, gift vouchers and wine sales, visit www.HanwellWine.co.uk or call the vineyard on 01949 81393.

HANWELL WINE ESTATE

Diary dates

April	22 nd & 27 th - Frame weaving workshop
	28 th - Spring poetry walk
	29 th - Landscape oil painting workshop
May	
	14 th - Rural Antics arts and crafts fair
	17 th - Landscape oil painting workshop
	20 th - Foraging in spring workshop
	27 th - Annual Vineyard Open Day
June	
	3-4 th June - Bentwood chair making
	8-9 th June - Bentwood chair making
	17 th June - Pencil drawing workshop
July	
	1 st - Vineyard tour and wine tasting
	2 nd - Natural Wellness Event
	7 th - Vineyard tour and wine tasting
	29 th - Pencil drawing workshop
August	
	4 th & 5 th - Vineyard tour and wine tasting
	28 th - Bank Holiday Blackberry picking
September	
	1 st & 2 nd - Vineyard tour and wine tasting



150 Club Draw

January 2017		February 2017	
£80	98 Glyn Pilkington	£80	188 Mr & Mrs Buckley
	Main Street		Charles Acres
£60	79 Andrew Terry	£60	52 Mr S Bolton
	Main Street		The Green
£40	187 Mrs Edmonds	£40	68 Mrs D Chahal
	Pudding Lane		Green lane
£20	135 Alex Thomas	£20	86 Mrs G Simpson
	Main Street		Keyworth

These are the last draws until next autumn

Nottinghamshire County Show 2017
Sat 13 & Sun 14 May 2017
 Newark Showground

Adult Advanced £10 (Cash £15)
 Under 17's go FREE

Book online:
nottinghamshirecountyshow.com

A GREAT FAMILY DAY OUT

/NottinghamshireCountyShow @nottscountyshow
 Newark Showground NG24 2NY

BUNGALOW AT SUTTON ON SEA

STEPS AWAY FROM THE SANDY BEACHES AND SANDHURST PROMENADE

A Nice bungalow with own gardens and conservatory.

-Available for whole weeks and some short breaks-

Sutton-on-Sea on the Lincolnshire Coast—near to Alford and Mablethorpe. A very quiet town out of season with Chip Shop, Bakery, Small SPAR supermarket, Pubs, Grange and Links Hotel/Restaurant. Very unspoilt—(no arcades or amusements by order of Town Council).

Sleeps 4-6

3 bedrooms (one upstairs) -Bring your own bedlinen and towels please)

Dogs allowed and by arrangement only

SEE WEBSITE FOR DETAILS- www.thebungalowsonsuttononsea.co.uk

FOR PRICES email holidays@thebungalowsonsuttononsea.co.uk

Tel. 01664 822238 - KRISTINA

No Courgettes?

Headlines about supermarket shelves stripped bare of courgettes raised a few chuckles among members of Kinoulton Allotment Society. Courgettes must be one of our most successful crops. Absolutely fail proof! Frankly I rarely buy them out of season since we have such a glut of them throughout the summer, as most of my neighbours have come to know. True, we do not have fresh courgettes in February and March but most of us still have frozen ratatouille, made from our own courgettes, tomatoes, onions and other summer vegetables (delicious for pasta sauces). All through the winter we also have fresh leeks, cavalo nero, purple sprouting broccoli and everlasting spinach, to name but a few of the vegetables which thrive on Kinoulton clay, so we can usually cope with any shortage in the shops. Those with a greenhouse are able to grow lettuce (another crop in short supply, I believe) throughout all but the darkest months of the year. Lettuce is pretty hardy, if you select the right varieties. Once germinated, it's low light levels rather than cold which stop it growing.

Surplus allotment crops are left on the table alongside the gate just inside the allotment fence for anyone to help themselves. Gluts tend to occur in July/August/September – courgettes, beans, beets are the most frequent donations to the 'free' table. However if you take the diagonal footpath across the field to join up with the Vimy Ridge bridge path you may also find, in season, cabbages, parsnips, rhubarb and apples. I'm afraid you won't find soft fruit such as strawberries. If you want home grown raspberries or strawberries then join the community allotment which grows a range of fruit to share between members. (Contact Carol Savage casavage1@aol.com) Or try some in a raised bed in your back garden but make sure to protect fruit from cats and dogs.

Hopefully, by the time you are all reading this article it will have finally stopped raining and you will glimpse allotmenters from Hickling and Kinoulton emerging from hibernation to start preparing the ground for spring sowing.

For any queries about obtaining an allotment plot contact Rita Piper (rbpiper@tiscali.co.uk)



Bed & Breakfast in

Hickling



A warm welcome awaits you to share my home.
Telephone Angela on 01664 822597
or my mobile 07712 443668

RAY'S BOILER SERVICES

GAS, LPG & OIL APPLIANCE
SERVICING



GAS, LPG & OIL APPLIANCE REPAIRS & SERVICING

Friendly and efficient service
Landlord certification undertaken



3009000

Ray Collier 07496 002 141 12 Ashdown Grove, Birmingham, Nottingham NG13 8RD

2017 CHURCH SERVICES (Sundays unless stated)

	Kinoulton		Hickling		Upper Broughton	
Date	Time	Service	Time	Service	Time	Service
April 2	9.15am	Holy Communion	6.30pm	Evensong BCP	11.00am	Family Holy Communion
April 9	9.45am	Meet at Village Hall		(no service)		(no service)
Palm Sunday	10.00am	then walk to church for service				
April 16	11.00am	All Age Worship	11.00am	All Age Worship	9.15am	Family Holy Communion
Easter Day		Family Service		Family Service		
April 23	11.00am	All Age Worship	6.30pm	Holy Communion	9.15am	Matins
St George		Family Service				
April 30	10.00am	Holy Communion		(no service)		(no service)
		Mission Partnership Service				
May 7	9.15am	Holy Communion	6.30pm	Evensong BCP	11.00am	Family Holy Communion
May 14	11.00am	Morning Prayer	9.15am	Holy Communion	10.45 am 3.00pm	Sunday Crew Informal Service
May 21	9.15am	Holy Communion	11.00am	All Age Worship	11.00am	Morning Prayer
		Family Service				
Thurs May 25		(no service)		(no service)	7.00pm	Holy Communion
Ascension Day						
May 28	11.00am	All Age Worship	6.30pm	Holy Communion	9.15am	Holy Communion
		Family Service				

St. Luke's Hickling April/May 2017 Rota

Date	Service	Sidesperson	Refreshments	Flowers	Cleaning
2 nd April 6.30 p.m	Evensong	A Thomas			D. Chahal / A. Thomas
9 th April 9.45 a.m	PALM SUNDAY PROCESSION	at KINOULTON	10.00 am SERVICE	at KINOULTON	
16 th April 11.00 am	Easter Sunday All-Age Worship	J. Bloor	A. Thomas	M. Simpson	M. Simpson / V. Haynes
23 rd April 6.30 pm	Holy Communion	J. Bloor			
30 th April 10.00 am	Holy Communion	GROUP	SERVICE	AT	KINOULTON
7 th May 6.30pm	Evensong	A. Banner		J. Harrison	A. Banner/C Hetherington
14 th May 9.15 am	Holy Communion	J. Bloor	E. Vear		
21 st May 11.00 am	All-Age Worship	D. Faulks	M. Simpson	G. Simpson	M. Smith +
28 th May 6.30 pm	Holy Communion	J. Bloor			

Easter Thoughts from The Rectory: April/May 2017

"Spring has sprung!", said the bumble bee.
"How do you know?", said the old oak tree.
"I just saw a daffodil blooming on a windy hill!"

Well spring has certainly arrived, some will say late, others will argue that its early, but whatever your point of view the seasons, much like the circle of life itself, cannot be ignored. They come and they go. It will be summer soon, with warm sunny days (well we all hope so) the harvest will be collected and the fields ploughed again and before we know it, winter will be round the corner.

In the meantime we have that great Christian feast of Easter to celebrate. The time of new beginnings when the ever compassionate Jesus gave His life, and was resurrected, that we might all have eternal life. Easter eggs are a reminder of that new life we can all expect, and not just something wonderful to eat!

As we all get older the days do seem to rush past ever quicker. Since my husband retired he is convinced that the earth has somehow speeded up and what used to take him a couple of days now takes twice as long! This is, of course, impossible, but talk to any older person and they will all tell you the same. We cannot slow this world of ours down, any more than we can speed it up, it's just how we see the world and react to changes that make it seem so.

Many people have a list of things they want to do before it becomes too late. Noël would like to visit Christmas Island (maybe something to do with his name) and I would love to visit Thailand. But not all these wishes and plans should involve travel. Sometimes it's the little things that never seem to get done that perhaps we ought to set our minds on doing. I have an elderly friend who I really must go and visit, but lately there seems to be too many others things that I "must" do first. Noël says I really must prioritise my life, but to decide what is more important than others is a daunting task.

Jesus tells us in the 10 Commandments what His priorities are and perhaps the greatest of these is the one that tells us **to love thy neighbour as thy self**. To treat others as you would want to be treated yourself. Easy words to write but not always such an easy thing to do. The commandments were given to Moses by God when he wandered up Mount Sinai long before Jesus was even born. They were given as a set of rules by which to live a good life. Even today, many centuries later, they are used as a basis for law and order throughout the world. If you would like to read the story of Moses it may be found in the Old Testament in the book of Exodus, along with his encounter with a burning bush, the odd plague or two, frogs falling from the sky and a parting of the waves!

So I guess its back to prioritising my life with Jesus' words in mind. I will go and visit my old friend, I will write that overdue email and I will try to be more understanding of others and love my neighbours but I still want to go to Thailand!

God Bless
Rev Maggie

St Luke's events leading up to Easter Sunday.

Lent began a couple of weeks ago, that time in the Christian year when we think about Jesus being tempted in the desert by Satan and begin to prepare for what is a momentous event in the Christian calendar: EASTER DAY.

Palm Sunday 9th April

Is the time we remember Jesus riding into Jerusalem on the back of a donkey and crowds of people welcoming him with shouts of Hosanna and the waving of palm branches. To celebrate this story the three St Luke's Churches will be joining together for a walk to church with our own donkey/foal. We shall start from Kinoulton Village Hall at 9.45am and walk to St Luke's Church giving out Palm Crosses to all we see. At church we shall collectively read the Passion of St John to be followed by a service of Holy Communion. We extend a very warm welcome to you all to join us at church.

Holy Week is the week before Easter Sunday and during that week there will be short services each evening around our three churches culminating on Maundy Thursday (13th April) with a service at Kinoulton Church where following a service of Holy Communion the altar will be stripped in preparation for Good Friday.

Good Friday 14th April

Good Friday is the day that, despite the Roman Governor Pontius Pilate being able to find no fault in Him, Jesus was crucified upon the Cross on Golgotha. To remind us of this journey and sacrifice Jesus undertook for us all, there will be a Walk of Faith from St Luke's Church at Upper Broughton to St Luke's at Hickling and then along the footpath to St Luke's Kinoulton. There will be readings and Easter Hymns sung at each church and to ensure we don't "pass out" along the way refreshments will be served at each church. The walk starts at 12.00noon at Upper Broughton Church and will conclude at Kinoulton Church with a time of silent reflection.

We extend a very warm invitation to everyone to come along and join with us.

Easter Day: Sunday 16th April

In the Christian calendar Easter Day is remembered at the day Jesus rose from the tomb after his crucifixion. It is perhaps the most important event in the church year and at least equal to Christmas Day.

There will be a service in each of our three churches on Easter Sunday starting with a service of Family Holy Communion at 9.15am at St Luke's Upper Broughton. At 11.00am there will be All Age Family Services held at both St Luke's Hickling and St Luke's Kinoulton. There will be events for children at all three services and we offer you all a very warm welcome to come along a join us at St Luke's to celebrate Easter.

May I on behalf of all the congregations of all three Churches of St Luke, wish you all a very Happy Easter.
God Bless, Rev Maggie

Vale Electricians

Electrical Contractors

Specialists in all types of Industrial,
Commercial and Domestic Installation

1a Station Lane, Old Dalby,

Leicestershire LE14 3LR

Telephone (01664) 822 217

National Inspection Council for
Electrical Installation Contracting
njc EIC
APPROVED CONTRACTOR



Creative Curtains

MADE TO MEASURE SOFT FURNISHINGS

'TWIN TREES,' PARADISE LANE,

OLD DALBY.

01664 822475

A.R. PEET LIMITED

Specialist Retailer of Wood, Gas, Electric and Multifuel
Stoves

Tel: 01664 822397

www.arpeetstoves.co.uk info@arpeetstoves.co.uk

HOME FARM, MAIN STREET, HICKLING

Village Clock Electric Motor on Order

Thanks to some amazingly generous donations together with our fundraising, we now have what we need to fund the motor for the winding mechanism. We have applied for the faculty (permission) for its installation and this has been given in outline. This would mean that it could be fitted by April.

We would like to thank everyone who has supported this project, including one very generous anonymous donor, the County Council, the District Council, the Parish Council and other individual donors and supporters of church events.

Alex Thomas (Treasurer, St. Luke's)

What a Jumble Sale!

It was cold, it was wet. Would anyone bring jumble to sell? Would anyone come to buy?

From 8.00 am till 1.00 pm we received jumble, unpacked it, sorted it, put it on the right table.

By this time, there was a queue of customers outside in the rain. Encouraging.

Doors opened at 2.00 pm and for 90 minutes non-stop we sold jumble, tea and cakes, Tombola tickets. The crowds left, we thought we had sold a lot, but we still had a lot to pack into boxes ready to be collected as arranged.

At home the money was counted and bagged for the bank. Amazing - £980 profit – the highest total ever.

A big thank you to the 26 volunteer helpers, those who delivered jumble to us, those who came to buy. A wonderful start to the year.

PCC of St. Luke's Church

Church Jumble Sale 11th February

The jumble sale was very successful, realising £974 after expenses. Thank you to everyone who donated jumble and thank you for everyone who worked hard to sort the jumble and sell it.

Two other charities benefited from what was left. It is good to see how much benefit can come from unwanted stuff.

The Vale Physiotherapy & Sports Injury Clinic

Established 1979

Physiotherapist & Researcher

7 highly experienced & chartered Physiotherapists

- ▶ Sports Injuries
- ▶ Neck, Back & Limb Pain
- ▶ Work Related Injuries
- ▶ Pilates
- ▶ Acupuncture (for pain relief)
- ▶ Herbs/Chiropractic
- ▶ General Rehabilitation
- ▶ Shockwave Therapy, Laser & Ultrasound
- ▶ Domiciliary Visits including Neurological Conditions



Excellent patient satisfaction record.
Please give us a call if you are suffering with aches & pains which are interfering with your enjoyment of life.

Call 01664 822234

to arrange an appointment.

Website: www.valephysiotherapy.co.uk Email: info@valephysiotherapy.co.uk
General Practice: 11am - 5pm, Monday, Tuesday, Wednesday, Thursday, Friday, 9am - 12pm, Saturday

DAVID HEWITT AERIAL SERVICES

**TV/DAB/FM/DIGITAL
AERIALS FITTED &
REPAIRED**

digital Freesat

TV/DVD/VCR TUNERS

LOCAL SERVICE EST 32 YEARS



**FREE QUOTES
ALL AREAS COVERED
SPECIAL RATES FOR PENSIONERS & DISABLED**

Call 01664 820430

Corner Cottage, Clawson Lane, Hickling LE14 3AB

LADY FRIDAY

Are you short of TIME?

I could support you when you're working or on holiday

HOME

Water plants, take mail in & generally check all is well
Monitor builders, decorators or maintenance personnel
Shopping - Deliveries - Collections

JUVENILE & SENIOR RELATIVES

Meet children from school or take them to their recreational activities*
Supervise elderly relatives to ensure they keep appointments, catch trains or whatever

PETS

Regularly, or occasionally, walk your dogs & give them their meals
Supervise & feed other pets including horses & cats
Do not hesitate to ask - I am reliable and versatile!
References available on request, inc CRB*



Angela Sallis, The Olde Forge, Hickling 01664 822597

angela.sallis@btinternet.com

Neville & Langar Ward Councillor's Spring News Letter

for
Kinoupton, Hickling, Upper Broughton, Colston Bassett, Owthorpe,
Langar & Hickling Pastures



COMMUNITIES THRIVING IN THE NEVILLE & LANGAR WARD
Neville Ward Post office - Don't forget that not only can you buy stamps etc at St Luke's church post office in Kinoupton on Wednesdays, but you can also enjoy a coffee and 'scrummy' cake. We are at least offering one post office facility in the Ward!

Village breakfasts continue to be 'hearty in Hickling' with families coming from well beyond the parish boundaries the first Sunday in the month. There have now been 60 breakfast Sundays since the start and the trustee, hard working volunteers have raised a whopping £20,000 for the Village Hall. They are incredibly well attended and there is always a great atmosphere.

The Vale Market Cafe is Langar and Barnstone's monthly village community cafe. Held on the second Saturday morning of the month at Barnstone Village Hall. Well worth a visit for a good bacon butty or to buy some wonderful cakes and pies plus fresh local vegetables.

Upper Broughton is also becoming very theatrical with an hilarious Village Ventures production of 'Instructions for American Servicemen in Britain'. It's a long time since I laughed that much. And Christmas saw a children's production of 'The Elves and the Carpenter' with Colston Bassett also scheduled to give the same performance. Keep you eye open for future events.

Welcome To Rushcliffe Arena

It is the new home of Rushcliffe Borough Council.

The council's offices for the past 34 years, in the landmark eight-storey Civic Centre overlooking the River Trent, have closed, saving £350,000 annually in running costs. The savings have resulted in terrific, multi use, and value for money, new office accommodation combined with a state-of-the-art Leisure Centre for the people of Rushcliffe.

IAN HODGETT
Joiner and Cabinet Maker
 Based in Cropwell Bishop with 30 years experience

- Supply and installation of handcrafted cabinets and bespoke fitted furniture
- Kitchen refurbishmen including timber worktop/maintenance
- Staircase conversion
- Sash window refurbishment
- Garden furniture maintenance
- Laying of wooden floors

Supporting Services

- Design Service
- Project management
- Sourcing of Kitchen
- Installation only
- Tiling
- Decorating

Office: 0115 8371182 Mobile: 07725 973133

Email: ian-hodgett@hotmail.co.uk



Trent Upholsteries Ltd.

Master Upholsterers

Reupholstery Specialists and
 Manufacturers of Quality Upholstery.

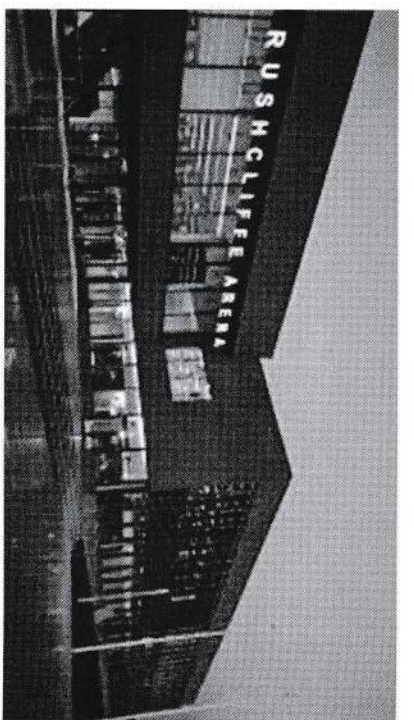
Member of the Association of Master Upholsterers.
 Select from our large range of fabrics and trimmings.
 Traditional and modern upholstery methods.

Hand built upholstery to your measurements using beech
 frames and coil springing.

**Trent House, Croydon Road, St. Peter's Street,
 Nottingham. NG7 3DS.**
Telephone: 0115 978 6699

**Website: trentupholsteries.co.uk
 E-mail: info@trentuph.co.uk**

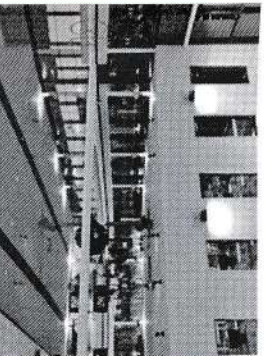
Visit our showroom or phone and ask for advice.
 Private car parking.



In May 2014, the Council approved ambitious plans to renovate the existing leisure centre at the Rushcliffe Arena site, whilst taking the opportunity to co-locate their offices on the first floor. The move also frees up the Civic Centre building for an exciting future, as it's too spacious for the 200 staff based there now, plus the new offices are smaller and more cost effective for the Council to run.

The Civic Centre site has a rich history. In 1982, with 800 staff, Rushcliffe Borough Council moved into the eight-storey, landmark white building which overlooks the River Trent. The building was constructed in 1964 on the site of the Plaza Cinema and was formerly a popular hotel called The Bridgford Hotel. Going back to the turn of the century, in 1903 the site was used for the Midlands Industrial Exhibition, an Indian-style pavilion building which gave Pavilion Road its name. It hosted exhibits from around the world and various other attractions such as a maze, a concert hall, and a high wire walker. Unfortunately the pavilion burnt down in 1904, only a year after it opened.

Work to rebuild the old Rushcliffe Arena and combine offices with Leisure began in September 2015 and opened January 3rd 2017



Clr Neil Clarke, Leader of Rushcliffe Borough Council said: "This is a momentous time - years of planning are about to come to fruition. Not only have we enhanced sports provision in the borough, but also we're reducing our on going running costs, making more efficient use of taxpayers' money. Our new, purpose-built facility works for a modern council and meets the needs of the community. Staff and Councillors are excited to start working from the new office."

120x Station Gym + weights area
6x Lane 25m-Swimming Pool & Family Themed Play Pool, + disabled hoist

Sauna & Steam room + treatment rooms

6x Lane Indoor Bowling Green,

4x Court multi discipline Sports Hall,

3x Squash Courts with sliding walls for multi use

2x Snooker Tables

Friendly on site Café.

Rushcliffe Arena - Rugby Road, West Bridgford, Nottingham, NG2 7HY

Tel: 01159 814 027

Although the Council's head office has moved, if residents wish to contact them face to face, the place to go is still the Rushcliffe Community Contact Centre at the police station in West Bridgford, or one of the contact points across the borough – see <http://www.rushcliffe.gov.uk/customerservices/> for details.

FLY TIPPING

Good news - a fly tip was reported within the Ward and removed within 4 hours – fantastic response – but not only was it removed but hopefully relevant address material was found.

Whilst on the subject of waste there is still confusion over recycling so hopefully this list below will help.

WHAT CAN I PUT IN MY BLUE BIN?

Blue bin

Your blue bin is for paper, card, mixed food & drinks cans, yoghurt pots, margarine tubs and plastic bottles only.

Only put the following items into the blue bin. We will take flat packed cardboard next to the bin if it is too large to place into the bin.

Plastic - shower gels/shampoo & conditioner bottles

Plastic - hand soaps & cosmetic bottles

Plastic - household cleaning fluid bottles

Cans - empty aerosols & deodorants

Cardboard - toiletry boxes, toilet roll tubes, tooth paste boxes, hand soap boxes & cosmetic boxes

Plastic - milk bottles, pop, water and soft drinks bottles

Plastic - fabric & conditioner bottles

Plastic - household cleaning bottles

Plastic - yoghurt pots & margarine tubs

Cardboard - cereal boxes & egg boxes

Cardboard - other cardboard packaging

Cans - food and drink cans

Paper - newspapers, magazines and pamphlets

Paper - junk mail, envelopes & writing paper

34 Cans - empty aerosols



Bin there done that

PLEASE NOTE NAPPIES AND WET WIPES ARE NOT RECYCLABLE

Additional bins

If there are five or more people in a household or where two or more children are in nappies, you may be entitled to an [extra grey bin](#).

Large unwanted item collections

For a small charge Rushcliffe can collect your [large household items](#).

Battery recycling

Rushcliffe collect your used batteries. Put your used household batteries in the bag provided, place on any colour bin, any week and we will recycle them

The big health debate

Outcome of patient engagement: should over the counter medicines be available on prescription for minor illnesses?

Following a six-week engagement campaign, health commissioners in South Nottinghamshire have approved plans to limit prescriptions for over the counter medicines (such as ibuprofen and paracetamol) for minor ailments, coming into effect from Wednesday 1 March 2017.

From the patient's perspective these plans mean that over the counter (OTC) products like paracetamol and antihistamines will no longer be prescribed for short-term, self-limiting conditions. In these instances, patients will be encouraged to buy their own from their local chemist or supermarket.

COUNTRY STORE

Sadly the Country Store, "The Good Grub Company" formerly Hortors, has closed. This is an enormous blow to the Newlie Ward Communities. Hopefully a new tenant will be found for us all to support. It is a very valuable community amenity as there are no village shops in either Hickling, Kinoulton, Colston Bassett nor Upper-Broughton since the sad demise of Baileys The Butchers. There is a golden opportunity at the former Hortors site for a new entrepreneur to take over the mantle.

Don't forget if you have issues of community interest with which you need help please get in touch.

Cllr. Tina Combellack

Cllr.tcombellack@rushcliffe.to.gov.uk

35

House for Rent in France in the Languedoc

The house is situated just off the square in a village with plenty of amenities: 3 restaurants, 2 bars, a supermarket, 3 bakeries and a butchers. It also has 3 markets a week in the square and is located between Béziers and Narbonne.

The house comprises 2 double and 2 twin bedrooms, 2 bathrooms, a utility room with 2 fridges, freezer, washing machine, dishwasher and television; and it also has a roof terrace with fantastic views

The Canal du Midi is just outside the village. Mediterranean beaches are just 20 mins away and the National Park with river swimming 35 mins away. It is an ideal base for exploring the area.

3 flights a week from EMA to Carcassonne, approx. 1 hour to house.

For more information prices and pictures, please contact us on:

01664 820068 07889 990853

middletonnt@gmail.com davidsweet720@gmail.com



Paws 4 Thought



Does your dog need exercising? Cat need feeding?

Going on holiday or working longer hours?

We can help with dog walking, Pet home visits

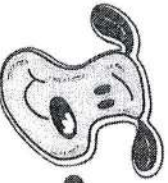
Small animal and dog boarding in our home

House sitting, collection & delivery service for your pet

Call Sally or Martin

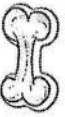
01664 823844 or 07890 889915

www.paws4thoughtoldalby.co.uk



National pet sitter registered and insured including CRB.

For all your pet requirements



HICKLING PARISH COUNCIL

A summary of the minutes from the meetings held on the 31st January and 14th March 2017.

The Parish Council welcomed two new councillors in January - Sean Barrett and Paul Garner-Evans. Members are always grateful when volunteers come forward to fill a vacancy and they look forward to working with the new members.

Planning Matters

Applications:

17/00476/FUL Lonicera Melton Road Hickling Pastures - Single storey rear extension, external insulation and render.

No objection

17/00427/OUT Swan House Main Street Hickling - Proposed two storey, three bedroom house with parking and garden.

The parish council commented on the oversized property on such a small plot and felt a smaller two-bedroom property would better meet the housing needs of the village.

16/03022/FUL Shree Shivkrupamand Swami Trust UK, Long Acre, Melton Rd, Hickling Pastures - Construction of building to accommodate meditation centre with associated toilet block, extension to driveway and new parking area.

Objection - The parish council objected to these proposals as it shared the concerns of neighbours relating to over-intensive development of the site and issues with vehicles speeding and the negative visual impact that the parked cars have on the surrounding properties.

Grants

Table Tennis Club - Application for funding of an outdoor table tennis table at the Old Wharf is being considered by the Parish Council, members requested more details relating to maintenance, liability and insurance.

The Parochial Church Council successfully applied for funding to add a motorised clock winding mechanism to the Village Clock at the Church.

Cemetery

The fees associated with burials at the cemetery will be increasing from April 1st 2017. Further details will be announced shortly.

Six headstones failed the topple test at the Annual Inspection and had to be lowered to comply with Health and Safety regulations. The parish council has attempted to find descendants of the deceased but for those where no living relatives can be traced, the headstones will remain permanently lowered.

Environmental Matters

Biomass at John Brookes Sawmills: The Parish Council has asked the Environmental Health Department at Rushcliffe Borough Council to follow up on concerns raised by neighbours relating to the storage of wood chippings.

Helicopters: The parish council continued to received concerns relating to the Heliport at Broughton Lodge and has forwarded these concerns to the relevant authorities for further investigation.

Anyone who has concerns relating to the Biomass Plant at John Brookes Sawmills or the Heliport should contact environmentalhealth@rushcliffe.gov.uk Fly tipping on Green Lane: The Parish Council requests that all parishioners keep their

STEVEN M. DAW

PLUMBING, HEATING and GAS SERVICES

Plumbing work – repairs; Central heating and boiler installations; Boiler servicing; Central heating power flushing; Bathroom design and installation

Over 30 years experience - we cover the Vale of Belvoir

Julian Cottage, Main Road, Shelford, Nottingham, NG12 1EE

Tel: 0115 933 5711 Mobile: 07860 285031

Email: stevendaw@btinternet.com



eyes open if they use Green Lane and report any suspicious activity relating to fly-tipping.

Telephone Kiosk
A new door has been purchased and will be fitted in the next few weeks.

Paintings
The parish council was offered three paintings that were originally housed at the former home of the Borough Council in the Civic Centre and were now surplus to requirement. The parish council will be making a small donation to the Mayor's Charity and the Village Hall Committee have kindly agreed to house them in the Village Hall.

Finance
The budget was agreed for the forthcoming financial year by council members, details can be found on the parish website.
The precept was set at £7,089

Website
For those parishioners who aren't aware, the parish website address and the parish council webpage can be found at
www.hicklingnotts.org
The website displays information relating to the community groups and events within the village.

You can find a full version of the minutes listed on the website.

ENOUGH IS ENOUGH

STOP THE
F  ULING

The Parish Council is making a final appeal to dog owners to clear up after **their** dogs. If this appeal fails, we will reluctantly consider installing motion sensing cameras to catch those irresponsible owners who continue to break the law.

With video evidence, you can be prosecuted and fined **£1,000**

YOUR DOG, YOUR RESPONSIBILITY.



Yve Complete Foot Health Care

Mobile foot health practitioner, MCFHP, MAFHP.
Fully qualified and insured.
Foot and nail problems assessed and treated to include:
thick damages nails, ingrowing toe nails, callous/hard skin, removal of corns, verrucas.

For appointments/enquiries/full price list 'phone 07875 733039

DAVID HEWITT AERIAL SERVICES

TV/DAB/FM/DIGITAL AERIALS FITTED & REPAIRED



TV/DVD/NCR TUNERS
LOCAL SERVICE EST 32 YEARS

FREE QUOTES
ALL AREAS COVERED

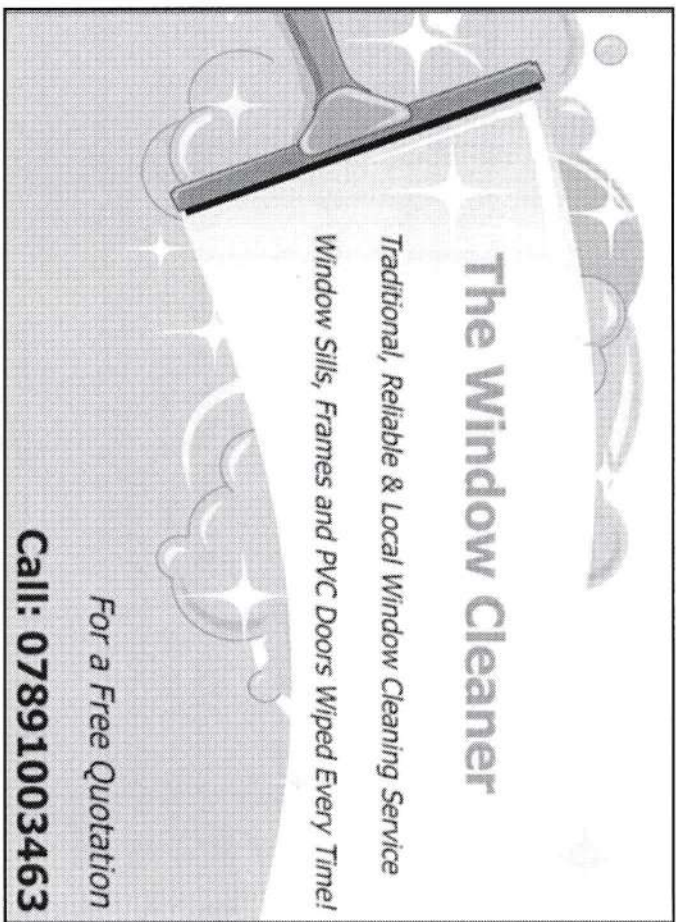
SPECIAL RATES FOR PENSIONERS & DISABLED



FreeSat

Call 01664 820430

Corner Cottage, Clawson Lane, Hickling LE14 3AB



The Window Cleaner

Traditional, Reliable & Local Window Cleaning Service

Window Sills, Frames and PVC Doors Wiped Every Time!

For a Free Quotation

Call: 07891003463

▶ **WILLIAM** ◀

▶ **HERROCK** ◀

FOR ALL YOUR BUILDING AND DIY SUPPLIES

❖ SLABS ❖ AGGREGATES
 ❖ WALLING ❖ CEMENT
 ❖ BRICKS ❖ BLOCKS
 ❖ ROOFING ❖ FENCING

ANY AMOUNTS CATERED FOR

FULL RANGE
 COAL & SMOKELESS FUEL
 for delivery
 or collection

MON - FRI: 7.30am - 5.00pm / SAT: 8.00am - 12.30pm

The Depot Airfield
 Dalby Road
 Melton Mowbray

Tel: 01664 500947
 Fax: 01664 410650



DOVE COTTAGE DAY HOSPICE

EVENTS 2017

Easter Egg Hunt
 Saturday 15th April
 At Dove Cottage Day Hospice
 10.30-12.30

Kids' Table Top, Refreshments and Lots of Games
 Children £4 - Adults £1
 All ages Welcome

Chocolate Prizes for Children and guess appearances from
 Mr & Mrs Easter Bunny!
 Minuature Garden Competition
 Please see website for full details - www.dovecottage.org

Fete, Dog Show and "It's a KNOCKOUT"
 Sunday 14th May
 At Dove Cottage Day Hospice
 Great fun day for family, friends and colleagues!
 Starts at 11.00am

It's a KNOCKOUT starts at 1.00pm
 Register your team online now at www.dovecottage.org

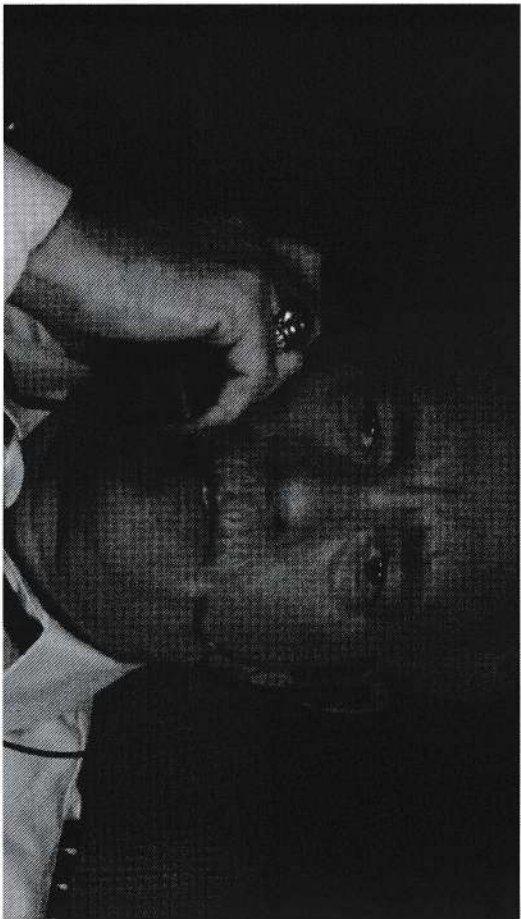
A Talk with Charles Hanson
 Friday 2nd June
 Brooksby Hall
 Talk, lunch and a valuation with an expert
 Start of BBC Bargain Hunt and Antiques Road Show
 Starts 10.00am
 £25 pp - tickets on sale now!
 Phone 01949 860303 to book your place - limited spaces!

If you would like any further information or book tickets for our events
 please email Georgina on georgina@dovecottage.org or call
 01949 860303.

Hickling Film Society

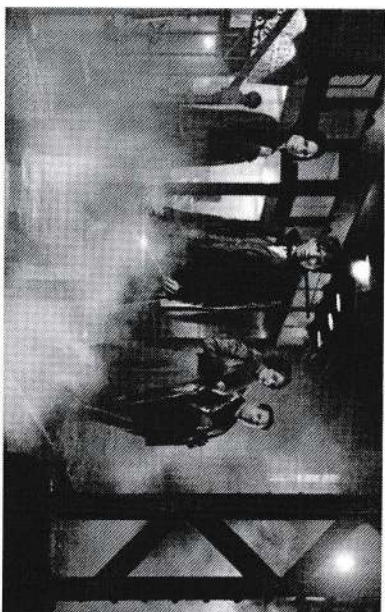
Film	Date
Sully	April 18th
Fantastic Beasts and Where To Find Them	May 2nd
A United Kingdom	May 16th

Sully: There's no doubt that the story behind *Sully*, the latest solid, awards-courting drama from Clint Eastwood, is an extraordinary one. On 15th January 2009, American pilot Chesley Sullenberger (played by Tom Hanks) landed his crippled passenger jet on the River Hudson saving the lives of all of the 155 souls on board. It's a tale of quiet, unfussy heroism; of highly-trained professionals doing their jobs in the most challenging circumstances imaginable. Very good reviews.



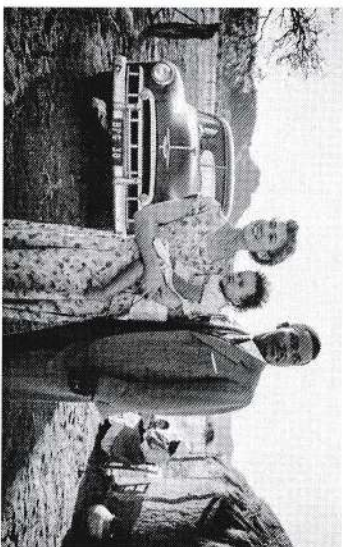
Tom Hanks as US Airways pilot Chesley Sullenberger in *Sully*.

Fantastic Beasts and Where To Find Them: J K Rowling whisks us back to the wizarding world of 1920s New York, helped by a star turn from Eddie Redmayne. The film is about the adventures of writer Newt Scamander in New York's secret community of witches and wizards, seventy years before Harry Potter reads his book in school. Say no more.



Endearingly gauche: Eddie Redmayne as Newt Scamander in *Fantastic Beasts and Where to Find Them*.

A United Kingdom: A strange, shameful chapter of history is dusted off by Amma Asante to make this earnestly stirring Empire drama. In the 1940s, Prince Seretse Khama of Botswana shocks the world when he marries a white woman from London. With terrific warmth and idealism – and irresistible storytelling relish – the director gives us a romantic true story from our dowdy post-war past. (*The Guardian*)



"But even when apart, or especially when apart, Oyelowo and Pike have chemistry, a rather British chemistry – their relationship convinces, perhaps just because of how restrained and decorous it mostly is." (*The Guardian*)

The usual fine wine and nibbles and quite comfy seats.

Tuesdays at 7.30pm in Hickling Village Hall

If you would like to be on the Film Society mailing list then please email Tim

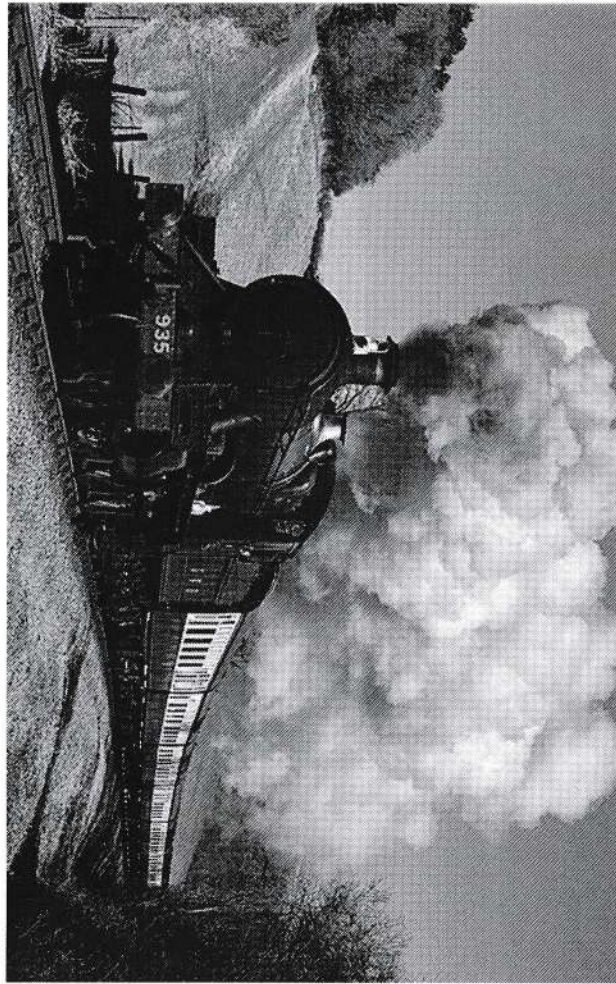
McEwen on tmcewen@globalnet.co.uk.

You will thereby join a not too select bunch of the je ne sais quoi.

Hickling History Group

On Tuesday, April 11th at 7.30 we shall be showing an archive film in the Village Hall entitled:

Britain on Film: Railways



One of the programmes from the Independent Cinema Office's new archive tour, Britain on Film: Railways is a major new collection of rare archive films charting the history of the UK's railways, bringing home the romance and heady freedoms offered by train travel as it expanded across the country in the early 20th century.

Sourced from the national and regional archives and newly digitised, Britain on Film: Railways is an immensely nostalgic and evocative collection of films which document not just the glories of the railway, but also the changing social, political and economic climates of the 20th century.

Tickets: £5 - to include a drink and nibbles

For further information please contact Carol Beadle (07964 474673)

Village Directory

150 Club	Liz Vear	822562
Beavers	-	
Bellringers	Lynn Irving	820071
British Legion	Colin Henson	01949 81453
Church Choir	Anita Kirkman	0115 937 4116
Councillors	John Cottee (County) cllr.john.cottee@nottscc.gov.uk Tina Combella (Borough) TCombella@rushcliffe.gov.uk	
Country Fair Committee	Margaret Woolley	822319
	Derk van der Wardt	822347
Cricket Club	P. Parkes	822370
	JD Walker	822244
Cubs	Susanne Youngson	07884 136890
Gardening Club	Mr B. Baxter	01949 81374
	Mrs B. Grundy	01949 81442
Good Neighbours Scheme	Liz Vear	822562 or 07805 407229
	Kay Hand	822612
Guides	Alison Popplewell	01949 81604
Hickling Pre-School	Nick	07950 558608
Hickling Standard	see back inside cover	
History Group	Dorothy Chahal	822369
	Carol Beadle	822195
	Maggy Jordan	822088
	Pauline Chell	822835
Kinoulton School	Mr Savage (head)	
Kinoulton School PTFA	Sarah Parris	01949 823925

Neighbourhood Watch Chris White 822152
Nottinghamshire Police Control Room

Non-emergency number 101

Open Gardens	Diane Foulkes	823740
Pantomime	Derk van der Wardt	822347
Parish Council	Jo Cartmell (Clerk)	822866
Parochial Church Council		
Rector	Maggie Woodward	01949 81183 maggie.woodward511@btinternet.com
Churchwarden	John Bloor	822682
	Gill Bloor	822682
Treasurer	Alex Thomas	823420
Secretary	Dorothy Chahal	822369
Save the Children Fund	Rachel Henson (chair)	01949 81453
	Angela Sallis (sec.)	822597
	Molly Collishaw	823115
	Barbara McEwen	822834
	Liz Smith	823428
Scouts	Susanne Youngson	07884 136890
Silver Jubilee Club	Maureen Jackson	01949 81325
Sunday Club	see PCC	
Toddlers	-	
Vale Beaders	Elizabeth Evans	01949 81501
	Jackie Haynes	822364
Village Hall	Barbara McEwen (Chair)	822834
	Tim McEwen (sec.)	822834
	John Robinson (treas.)	822762
	Phillipa Jacks (bookings)	823622
Women's Institute	Dorothy Chahal (Pres.)	822369
	Gweneth Cane (Sec)	0115 937 3970
	Kathryn McPherson (Treas)	01949 823733

Diary

2nd April	9-11	Village Hall	Village Breakfast
11th April	7.30	Village Hall	Britain on Film: Railways
15th April		Dove	Easter Egg Hunt
18th April	7.30	Village Hall	Film Club - Sully
20th April	7.30	Village Hall	WI - talk by Lord Mayor's Sergeant
25th April			WI - trip to Strelley bluebell woods
27th April			Trip to Heart of the Shires Shopping
			Village and Coton Manor
2nd May	7.30	Village Hall	Film Club - Fantastic Beast and Where to Find Them
13th May			WI - National Arboretum & Lichfield
14th May	11.00	Dove	It's a Knockout
16th May	7.30	Village Hall	Film Club - A United Kingdom
17th May			East Bridgford Guided Walk
18th May	7.30	Village Hall	WI - Talk on the Mitfords
1st June	7.00	Bingham	Guided Walk
2nd June	10.00	Brooksbury Hall	Talk with Charles Hanson
14th June			Trip to Elton Hall and Gardens
15th June	7.30	Village Hall	WI - Pottery making
22+23 July		St Luke's	Open Churches Weekend
17th August			WI - trip on Rutland Water boat
2nd Sept			WI - Black County Open Air Museum
9+10 Sept		All over!	Scarecrow Weekend



The Hickling Standard is printed by Southwolds Academy Reprographics
Unit - printroom@southwolds.notts.sch.uk

Hickling Village Newsletter - Committee

Chairman; Tim McEwen - Tel. 8222834 or tmcewen@globalnet.co.uk
Treasurer/Advertising; Andrew Terry } Tel. 822088 or

Copy & Secretary; Maggy Jordan } a.terry125@btinternet.com

Copy Collection; Jane Fraser - Tel. 8222845

Please get in touch with any of us if you have any comments or suggestions. We would welcome any contributions for future issues - articles, opinions, reports, recipes, poems, brain-teasers - whatever you would like to see in print!

2017 Copy Dates:

June/July 15/5/17 August/September 7/7/17

Copy must be received before these dates to guarantee its appearance.

Please note that the committee reserve the right to edit or omit any material submitted. Opinions expressed in published articles remain the responsibility of the author. Articles may be published anonymously but the committee does need to have details of authorship before publication.

If you are submitting articles ready for publication - (either typed or in computer format) we would be grateful if you could send it in A5 size.

COPY IN ANY FORM WILL BE GRATEFULLY RECEIVED!

e-mail address - a.terry125@btinternet.com

- please make sure that attachments are sent in Microsoft Word or Publisher compatible formats - thank you!

Handwritten Contributions.

If you have handwritten contributions please pass them for typing to:

Maggy Ivy House, Main Street or
Hazel Copperoaks, Bridgate Lane or
Jane Mill Lane Cottages

Otherwise please continue to pass any contributions or ideas to any of the other committee members. Thank You!

Advertising Rates (one advert for one year - 6 issues.)

Front inside cover - £50

Back cover - £65

Quarter page - £20

Half page - £30

Full page - £45

(enclose payment with copy for the advert and give to a committee member before the copy date.) **Personal wanted/for sale adverts are FREE.**